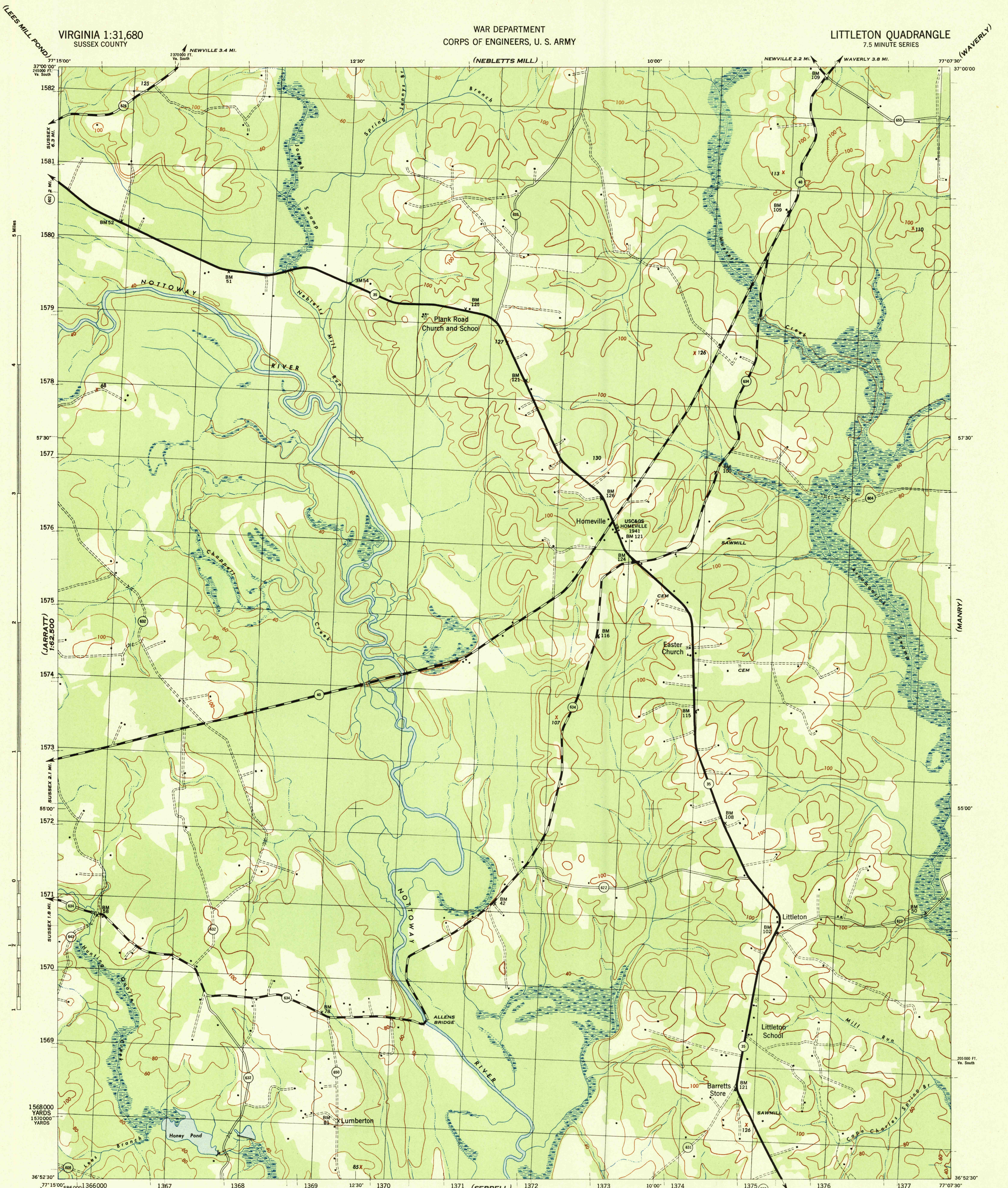


VIRGINIA 1:31,680  
SUSSEX COUNTY

WAR DEPARTMENT  
CORPS OF ENGINEERS, U. S. ARMY

LITTLETON QUADRANGLE  
7.5 MINUTE SERIES



Prepared by U. S. Department of Agriculture, Soil Conservation Service, under the direction of the Chief of Engineers, U. S. Army, 1943. Horizontal and vertical control by U. S. C. & G. S., U. S. G. S., and S. C. S., 1943. Topography by Soil Conservation Service, 1943. Polyconic projection, North American datum, 1927. This map complies with the National standard map accuracy requirements.

**ROAD CLASSIFICATION 1943**

Dependable hard-surface, heavy duty road	Loose-surface graded, dry-weather road	U. S. Route
Secondary, hard-surface, all-weather road	Dirt road	Slate Route

More than two lanes indicated by note along road with tick at point of change

Scale 1:31,680

1 Mile  
1000 500 0 1000 2000 Yards

CONTOUR INTERVAL 20 FEET  
DATUM IS MEAN SEA LEVEL

ONE THOUSAND YARD GRID COMPUTED FROM GRID SYSTEM FOR PROGRESSIVE MAPS IN THE U. S. ZONE B U. S. C. & G. S. SPECIAL PUBLICATION NO. 59 THE LAST THREE DIGITS OF THE GRID NUMBERS ARE OBTAINED FROM THE OVERLAPPING GRID ZONE A. IS INDICATED BY SHORT BROKEN TICKS CROSSING THE NEAT LINE VIRGINIA STATE GRID, SOUTH ZONE, IS INDICATED BY DOTTED TICKS OUTSIDE THE NEAT LINE AT 2000 FOOT INTERVALS. NOTE: OFFICERS USING THIS MAP WILL MARK HEREON CORRECTIONS AND ADDITIONS WHICH COME TO THEIR ATTENTION AND MAIL DIRECT TO THE CHIEF OF ENGINEERS, WASHINGTON, D. C.

APPROXIMATE MEAN DECLINATION 1943  
ANNUAL MAGNETIC CHANGE 30' DECREASE

USGS  
Historical File  
Topographic Division

LITTLETON, VA.  
N3652.5-W7707.5/7.5

U. S. S.  
FILE COPY  
Inspection and Filing