

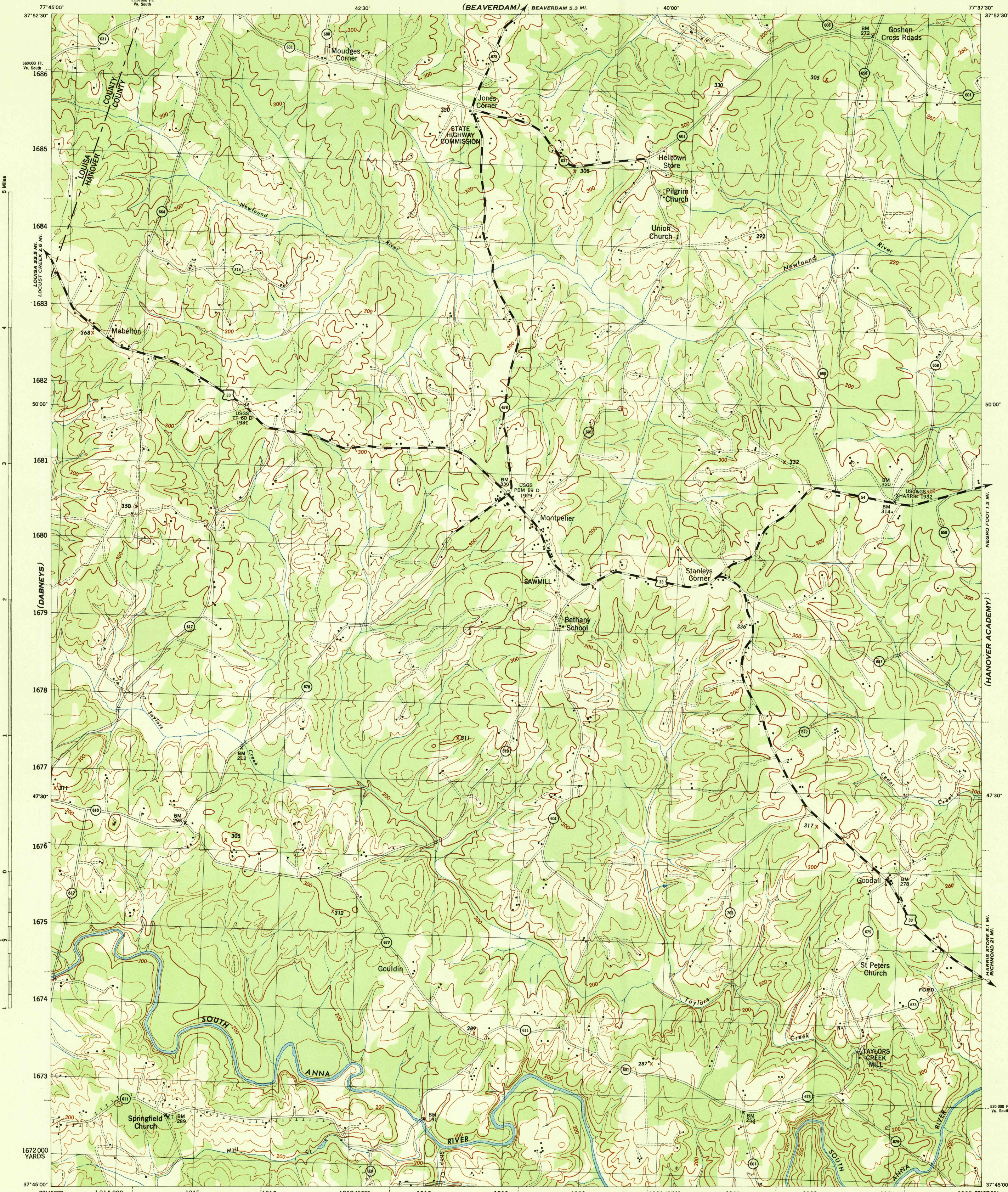
(BUCKNER)

VIRGINIA 1:31,680

WAR DEPARTMENT
CORPS OF ENGINEERS, U. S. ARMY

MABELTON QUADRANGLE
7.5 MINUTE SERIES

(HEWLETT)



Prepared by U. S. Department of Agriculture, Soil Conservation Service,
under the direction of the Chief of Engineers, U. S. Army, 1943.
Horizontal and vertical control by U. S. Coast and Geodetic Survey, U. S. Geological Survey, and S. C. S., 1942.
Topography by S. C. S., 1943. Wide-angle photography for S. C. S., 1942.
Polyconic projection, North American datum, 1927.
This map complies with the National standard map accuracy requirements.

ROAD CLASSIFICATION 1943
Dependable hard-surface, heavy-duty road
Loose-surface graded, dry-weather road
Secondary, hard-surface, all-weather road
Unimproved road
State Route
More than two lanes indicated by note along road with tick at point of change

Scale 1:31,680
1 0 1000 2000 Yards
1 Mile

CONTOUR INTERVAL 20 FEET
DATUM IS MEAN SEA LEVEL
ONE THOUSAND YARD GRID COMPUTED FROM "GRID SYSTEM FOR PROGRESSIVE MAPS"
IN THE U. S. ZONE B, U. S. C. & G. S. SPECIAL PUBLICATION NO. 59
THE LAST THREE DIGITS OF THE GRID NUMBERS ARE OMITTED
VIRGINIA STATE GRID, SOUTH ZONE, IS INDICATED BY DOTTED TICKS OUTSIDE THE NEAT LINE AT 5000 FOOT INTERVALS
NOTE: OFFICERS USING THIS MAP WILL MAKE NECESSARY CORRECTIONS AND ADDITIONS WHICH COME TO THEIR
ATTENTION AND MAIL DIRECT TO THE CHIEF OF ENGINEERS, WASHINGTON, D. C.

HISTORICAL FILES
(DO NOT REMOVE)

MABELTON, VA.
N3745-W7737.5/7.5