

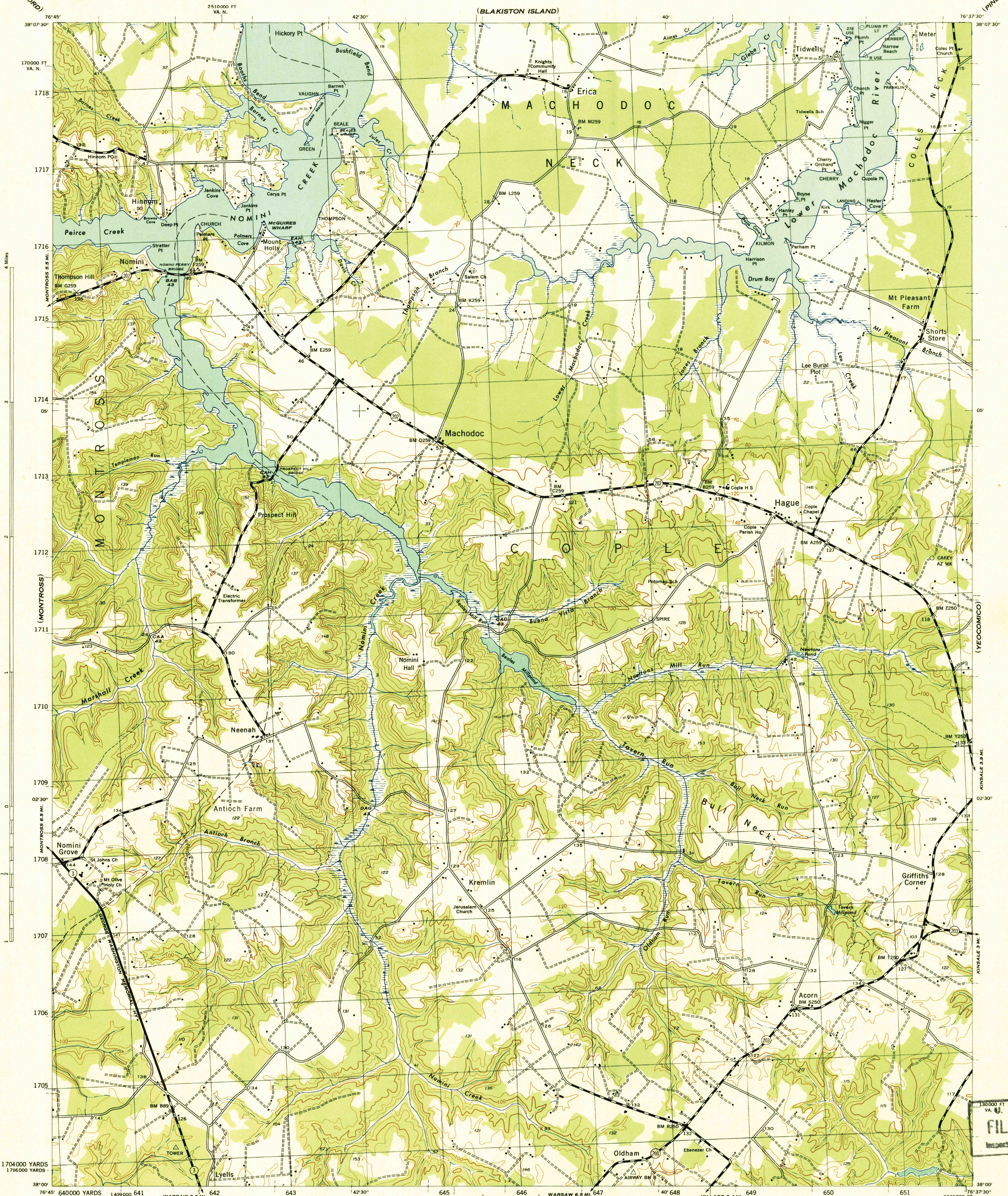
(STRATFORD)

VIRGINIA SCALE 1:31680
WESTMORELAND COUNTY

WAR DEPARTMENT
CORPS OF ENGINEERS, U. S. ARMY

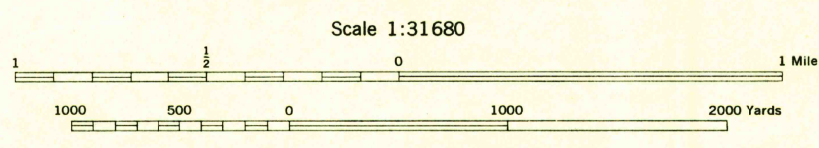
MACHODOC QUADRANGLE
7½-MINUTE SERIES

(PINEY POINT)



(TAPPANNOCK)

War Department mapping project.
Under direction of the Chief of Engineers.
Control by the U. S. Coast and Geodetic Survey.
Planimetry compiled from air photographs by U. S. Coast and Geodetic Survey.
Planetable topography and field edit by U. S. Coast and Geodetic Survey, 1943.
Polyconic projection, North American datum of 1927.
This map complies with the national standard map accuracy requirements.



USGS
Historical File
Topographic Division

REPRODUCED BY THE U. S. COAST AND GEODETIC SURVEY (7-4) 1943
AND NO. 120789
Recoverable horizontal control stations of less than third order accuracy are shown by circles.

(LOTTSBURG)

ROAD CLASSIFICATION 1943
Dependable hard-surface, heavy-duty road. ———— U. S. route 74
Secondary, hard-surface, all-weather road. ———— State route 26
Loose surface graded, dry-weather road. ————
Dirt road. ————
More than two lanes indicated by note along road with tick at point of change. ————

CONTOUR INTERVAL 20 FEET
DATUM IS MEAN SEA LEVEL
ONE THOUSAND YARD GRID COMPUTED FROM GRID SYSTEM FOR PROGRESSIVE MAPS IN THE U. S. ZONE A. U. S. C. & G. S. SPECIAL PUBLICATION NO. 59
THE "B" GRID IS INDICATED BY DASHED TICKS
THE LAST THREE DIGITS OF THE GRID NUMBERS ARE OMITTED
THE STATE GRIDS ARE INDICATED AT 10,000 FOOT INTERVALS
NOTE: OFFICERS USING THIS MAP WILL MARK CORRECTIONS AND ADDITIONS WHICH COME TO THEIR ATTENTION AND WILL DIRECT TO THE CHIEF OF ENGINEERS, WASHINGTON, D. C.

APPROXIMATE MEAN DECLINATION 1943
NO ANNUAL MAGNETIC CHANGE

MACHODOC VA.
N3800-W7637.5/7.5

130000 FT
VA. U. S. C. & G. S.
FILE COPY
Inspection and Editing