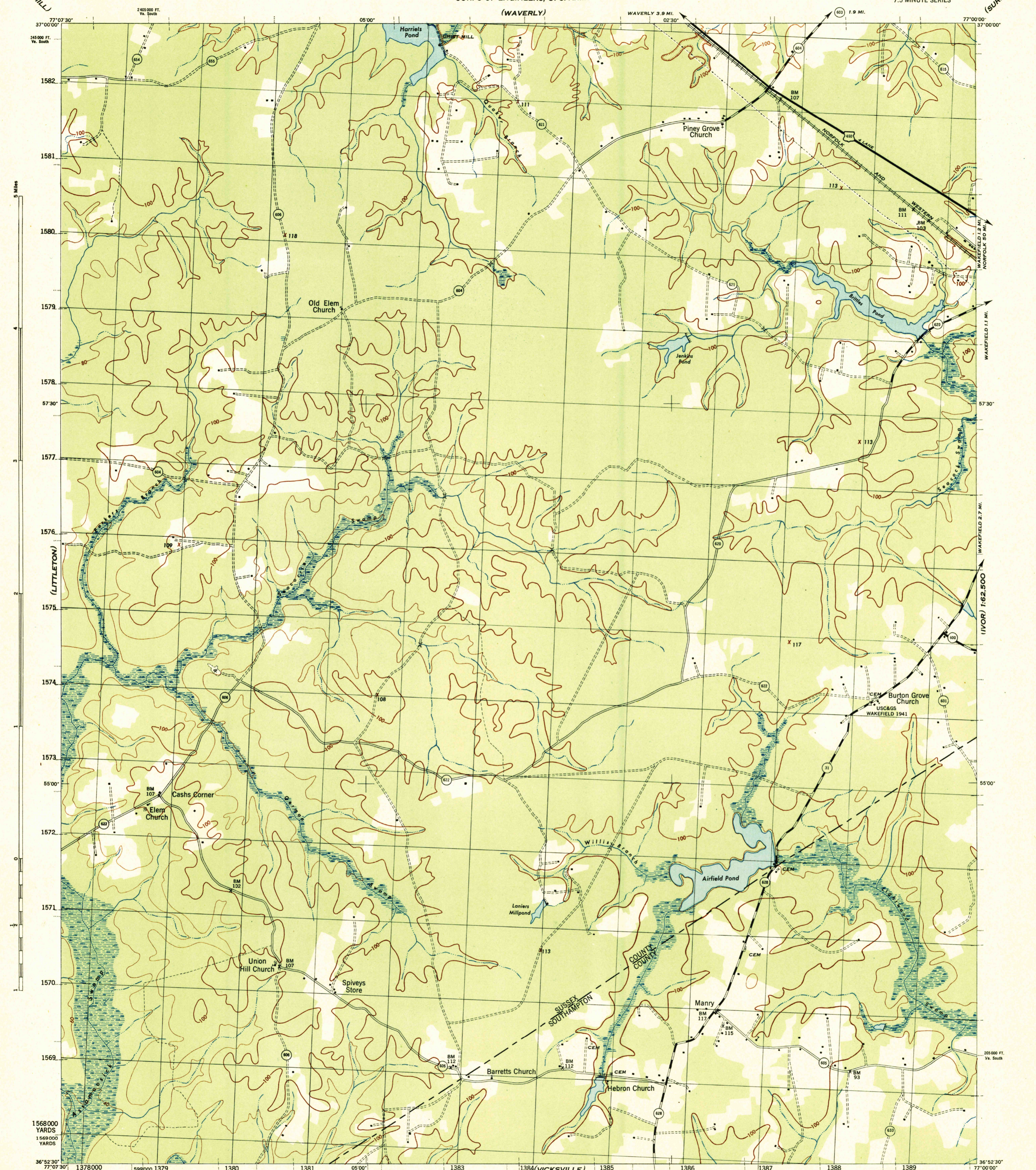


(WEBLETT'S MILL)

(SURREY) 1:62,500



Prepared by U. S. Department of Agriculture, Soil Conservation Service, under the direction of the Chief of Engineers, U. S. Army, 1943.
 Horizontal and vertical control by U. S. C. & G. S., U. S. G. S., and S. C. S., 1943.
 Topography by S. C. S., 1943. Wide-angle photography by S. C. S., 1942.
 Polyconic projection, North American datum, 1927.
 This map complies with the National standard map accuracy requirements.

ROAD CLASSIFICATION 1943

Dependable hard-surface, heavy-duty road	Loose-surface graded, dry-weather road	U. S. Route
Secondary, hard-surface, all-weather road	Dirt road	State Route
More than two lanes indicated by more along road with tick at point of change	LANE & LANE	

Scale 1:31,680

CONTOUR INTERVAL 20 FEET
DATUM IS MEAN SEA LEVEL

ONE THOUSAND YARD GRID COMPUTED FROM GRID SYSTEM FOR PROGRESSIVE MAPS IN THE U. S. ZONE B. U. S. C. & G. S. SPECIAL PUBLICATION NO. 89. THE LAST THREE DIGITS OF THE GRID NUMBERS ARE OMITTED. THE OVERLAPPING GRID ZONE A. IS INDICATED BY SHORT BROKEN TICKS CROSSING THE NEAT LINE. VIRGINIA STATE GRID, SOUTH ZONE, IS INDICATED BY DOTTED TICKS OUTSIDE THE NEAT LINE AT 5000 FOOT INTERVALS.

NOTE: OFFICES USING THIS MAP WILL MAKE NECESSARY CORRECTIONS AND ADDITIONS WHICH COME TO THEIR ATTENTION AND MAIL THEM TO THE CHIEF OF ENGINEERS, WASHINGTON, D. C.

USGS
Historical File
Topographic Division

U. S. G. S.
FILE COPY
Inspection and Editing.

MANRY, VA.
N3652.5 W7700/7.5

(SEBELL)

(WVOR) 1:62,500