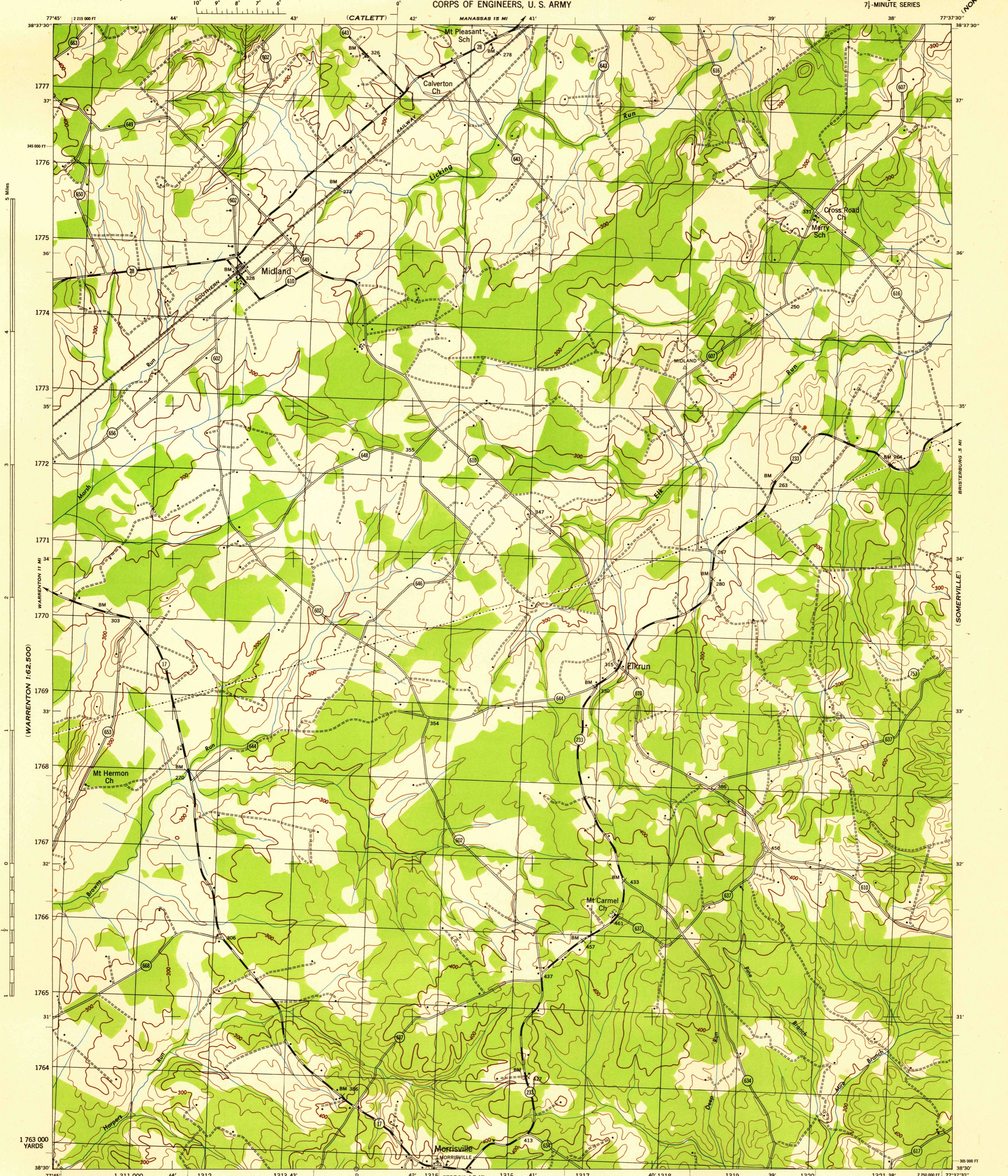


(NOKESVILLE)

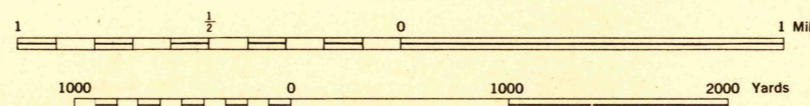


Prepared under direction of the Chief of Engineers, U. S. Army, 1944.  
 By the Mapping Section, Office Division Engineer, South Atlantic Division.  
 Control by Corps of Engineers, U. S. Geological Survey, U. S. Coast and Geodetic Survey  
 and U. S. Soil Conservation Service.  
 Topography by Stereophotogrammetric methods (Multiplex).  
 Aerial photography by 1st Mapping Group, U. S. Army, 1943.  
 Polyconic projection, 1927 North American datum.

ROAD CLASSIFICATION 1943

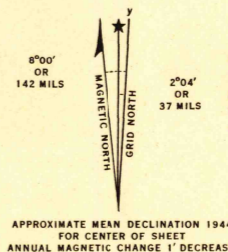
Dependable hard-surface, heavy-duty road. U. S. Route   
 Secondary, hard-surface, all-weather road. State Route   
 Loose-surface graded, dry weather road.   
 Dirt Road.   
 More than two lanes indicated by note along road with tick at point of change.   
 3 LANE, 4 LANE

THIS MAP COMPLIES WITH THE NATIONAL STANDARD MAP ACCURACY REQUIREMENTS.



CONTOUR INTERVAL 20 FEET  
DATUM IS MEAN SEA LEVEL

ONE THOUSAND YARD GRID COMPUTED FROM "GRID SYSTEM FOR PROGRESSIVE MAPS  
 IN THE U. S. ZONE B, U. S. C. & S. SPECIAL PUBLICATION NO. 98"  
 THE LAST THREE DIGITS OF THE GRID NUMBERS ARE OMITTED  
 VIRGINIA STATE GRID NORTH ZONE IS INDICATED BY DOTTED TICKS  
 BETWEEN THE MEAT LINE AT 2000 FOOT INTERVALS  
 NOTE: OFFICERS USING THIS MAP WILL MAKE PERSON CORRECTIONS AND ADDITIONS WHICH COME  
 TO THEIR ATTENTION AND MAIL DIRECT TO "THE CHIEF OF ENGINEERS, WASHINGTON, D. C."



Use diagram only to obtain numerical values.  
 To determine magnetic north line connect the pivot  
 point "P" on the south edge of the map with the value of  
 the angle between grid and magnetic north, as plotted  
 on the degree scale of the north edge of the map.

REPRODUCED BY THE SOUTH ATLANTIC DIVISION  
AGE NO. 121601

MIDLAND, VA.  
N3830-W7737.5/7.5  
EDITION OF 1944

HISTORICAL FILES

(DO NOT REMOVE)

GERMANNA BRIDGE

(STORCK)