

(GORDONSVILLE)
1:125000

VIRGINIA
MINERAL QUADRANGLE
GRID ZONE "B"

WAR DEPARTMENT
CORPS OF ENGINEERS, U. S. ARMY

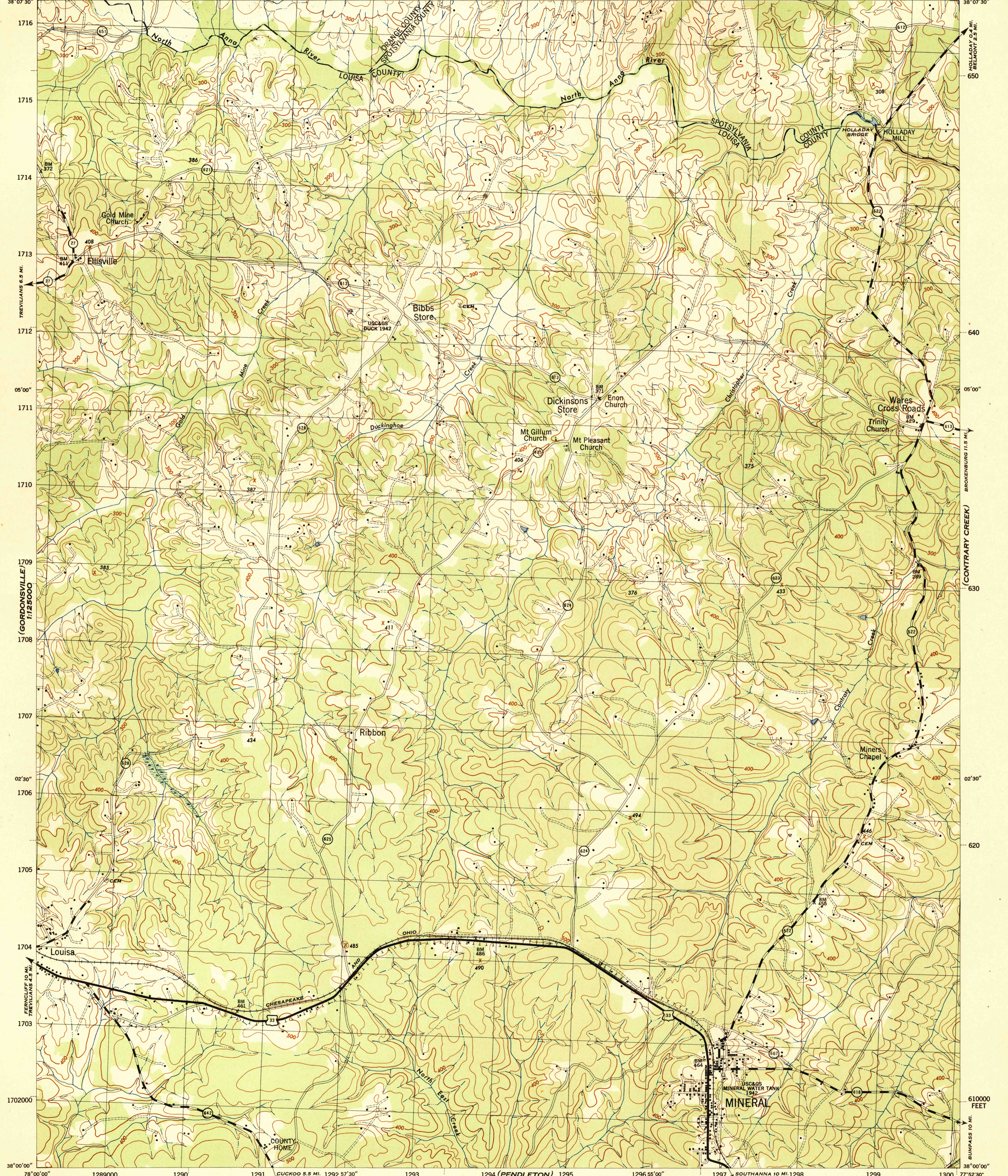
VIRGINIA
MINERAL QUADRANGLE
GRID ZONE "B"

(BELMONT)

2150000 FEET

(LAHORE)

2170



5 Miles

TREVILIANS 6.5 MI.

5

(GORDONSVILLE)
1:125000

1

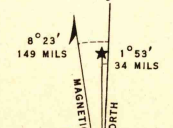
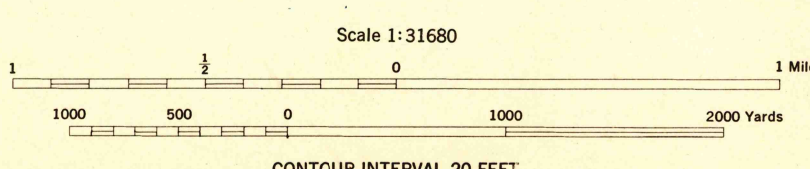
0

1

1702000

(PALMYRA)
1:125000

Prepared by U. S. Department of Agriculture, Soil Conservation Service,
under the direction of the Chief of Engineers, U. S. Army, 1942.
Horizontal and vertical control by U. S. Coast and Geodetic Survey, U. S. Geological Survey, and S. C. S., 1942.
Topography by S. C. S., 1942. Wide-angle photography for S. C. S., 1942.
Virginia system (South Zone) of plane coordinates indicated by 3-dash marginal ticks.
Polyconic projection, North American datum, 1927.



ROAD CLASSIFICATION		
Dependable hard-surface, heavy-duty road	Loose-surface graded, dry-weather road	U. S. Route 23
Secondary, hard-surface, all-weather road	Unimproved road	State Route 27
More than two lanes indicated by note along road with tick at point of change		3 LANE, 4 LANE

ONE THOUSAND YARD GRID COMPUTED FROM GRID SYSTEM FOR PROGRESSIVE MAPS
IN THE U. S. ZONE B, U. S. C. & G. S. SPECIAL PUBLICATION NO. 59
THE LAST THREE DIGITS OF THE GRID NUMBERS ARE OMITTED
NOTE: OFFICERS USING THIS MAP WILL MAKE NECESSARY CORRECTIONS AND ADJUSTMENTS WHICH COME
TO THEIR ATTENTION AND MAIL DIRECT TO THE CHIEF OF ENGINEERS, WASHINGTON, D. C.

APPROXIMATE MEAN
DECLINATION 1942
ANNUAL MAGNETIC CHANGE 30'
DECREASE

MINERAL, VA.
N3800-W7752.5/7.5

610000 FEET

(BUCKNER)