

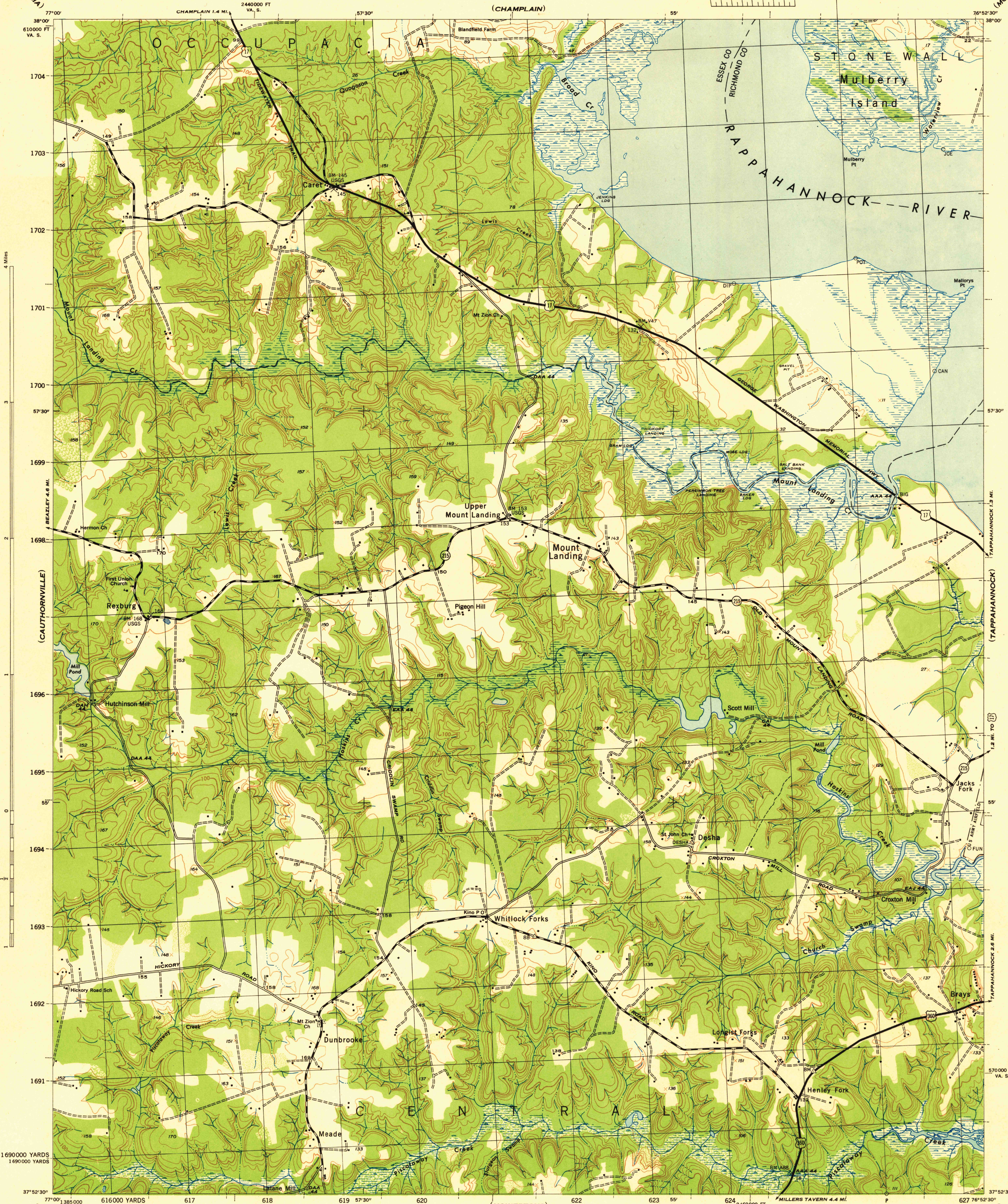
(OCCUPACIA)

VIRGINIA
SCALE 1:31680

WAR DEPARTMENT
CORPS OF ENGINEERS, U. S. ARMY

MOUNT LANDING QUADRANGLE
7½-MINUTE SERIES

(MONTROSS)



(AYLETT)

Mapped by the U. S. Coast and Geodetic Survey under the direction of the Chief of Engineers, U. S. Army, 1942.
 Control by the U. S. Coast and Geodetic Survey.
 Planimetry by the U. S. C. & G. S. from 1942 air photographs.
 Planetable topography and field edit by U. S. C. & G. S., 1944.
 Polyconic projection, North American datum of 1927.
 Recoverable horizontal control stations of less than third order accuracy are shown by circles.

ROAD CLASSIFICATION 1944

Dependable hard-surface, heavy-duty road. Loose-surface graded, dry-weather road. U. S. route (74)

Secondary, hard-surface, all-weather road. Dirt road. State route (26)

More than two lanes indicated by note along road with tick at point of change **3 LANE 4 LANE**

THIS MAP COMPLIES WITH THE NATIONAL STANDARD MAP ACCURACY REQUIREMENTS

Scale 1:31680

1 1/2 1 Mile

1000 500 0 1000 2000 Yards

CONTOUR INTERVAL 20 FEET
 DATUM IS MEAN SEA LEVEL

ONE THOUSAND YARD GRID COMPUTED FROM "GRID SYSTEM FOR PROGRESSIVE MAPS IN THE U. S. ZONE A, U. S. C. & G. S. SPECIAL PUBLICATION NO. 95" THE "1" GRID IS INDICATED BY SHARPER TICKS THE LAST THREE DIGITS OF THE GRID NUMBERS ARE OMITTED

THE STATE GRIDS ARE INDICATED AT 10,000 FOOT INTERVALS

NOTE: OFFICES USING THIS MAP WILL WANT REVISION CORRECTIONS AND ADDITIONAL WORK DONE IN THEIR ATTENTION AND MAIL DIRECT TO THE CHIEF OF ENGINEERS, WASHINGTON, D. C.

(HOWERTONS)

Scale 1:31680

1 1/2 1 Mile

1000 500 0 1000 2000 Yards

CONTOUR INTERVAL 20 FEET
 DATUM IS MEAN SEA LEVEL

ONE THOUSAND YARD GRID COMPUTED FROM "GRID SYSTEM FOR PROGRESSIVE MAPS IN THE U. S. ZONE A, U. S. C. & G. S. SPECIAL PUBLICATION NO. 95" THE "1" GRID IS INDICATED BY SHARPER TICKS THE LAST THREE DIGITS OF THE GRID NUMBERS ARE OMITTED

THE STATE GRIDS ARE INDICATED AT 10,000 FOOT INTERVALS

NOTE: OFFICES USING THIS MAP WILL WANT REVISION CORRECTIONS AND ADDITIONAL WORK DONE IN THEIR ATTENTION AND MAIL DIRECT TO THE CHIEF OF ENGINEERS, WASHINGTON, D. C.

(MILLERS TAVERN 4.4 MI.)

Scale 1:31680

1 1/2 1 Mile

1000 500 0 1000 2000 Yards

CONTOUR INTERVAL 20 FEET
 DATUM IS MEAN SEA LEVEL

ONE THOUSAND YARD GRID COMPUTED FROM "GRID SYSTEM FOR PROGRESSIVE MAPS IN THE U. S. ZONE A, U. S. C. & G. S. SPECIAL PUBLICATION NO. 95" THE "1" GRID IS INDICATED BY SHARPER TICKS THE LAST THREE DIGITS OF THE GRID NUMBERS ARE OMITTED

THE STATE GRIDS ARE INDICATED AT 10,000 FOOT INTERVALS

NOTE: OFFICES USING THIS MAP WILL WANT REVISION CORRECTIONS AND ADDITIONAL WORK DONE IN THEIR ATTENTION AND MAIL DIRECT TO THE CHIEF OF ENGINEERS, WASHINGTON, D. C.

(GUNNSVILLE)

Reproduced by the U. S. Coast and Geodetic Survey, AMS No. 121531

WOODLAND CLASSIFICATION

Dense woodland Dense brush

Scattered brush and trees Orchard

Marsh or swamp Low ground, intermittently flooded

APPROXIMATE MEAN DECLINATION 1943
 80 ANNUAL MAGNETIC CHANGE

Use diagram only to obtain numerical values. To determine magnetic north line, connect the point "P" on the south edge of the map with the value of the angle between GRID NORTH and MAGNETIC NORTH, as plotted on the degree scale of the north edge of the map.

MOUNT LANDING, VA.
 N3752.5-W7652.5/7.5
 EDITION OF 1944

USGS
 Historical File
 Topographic Division

(GUNNSVILLE)