

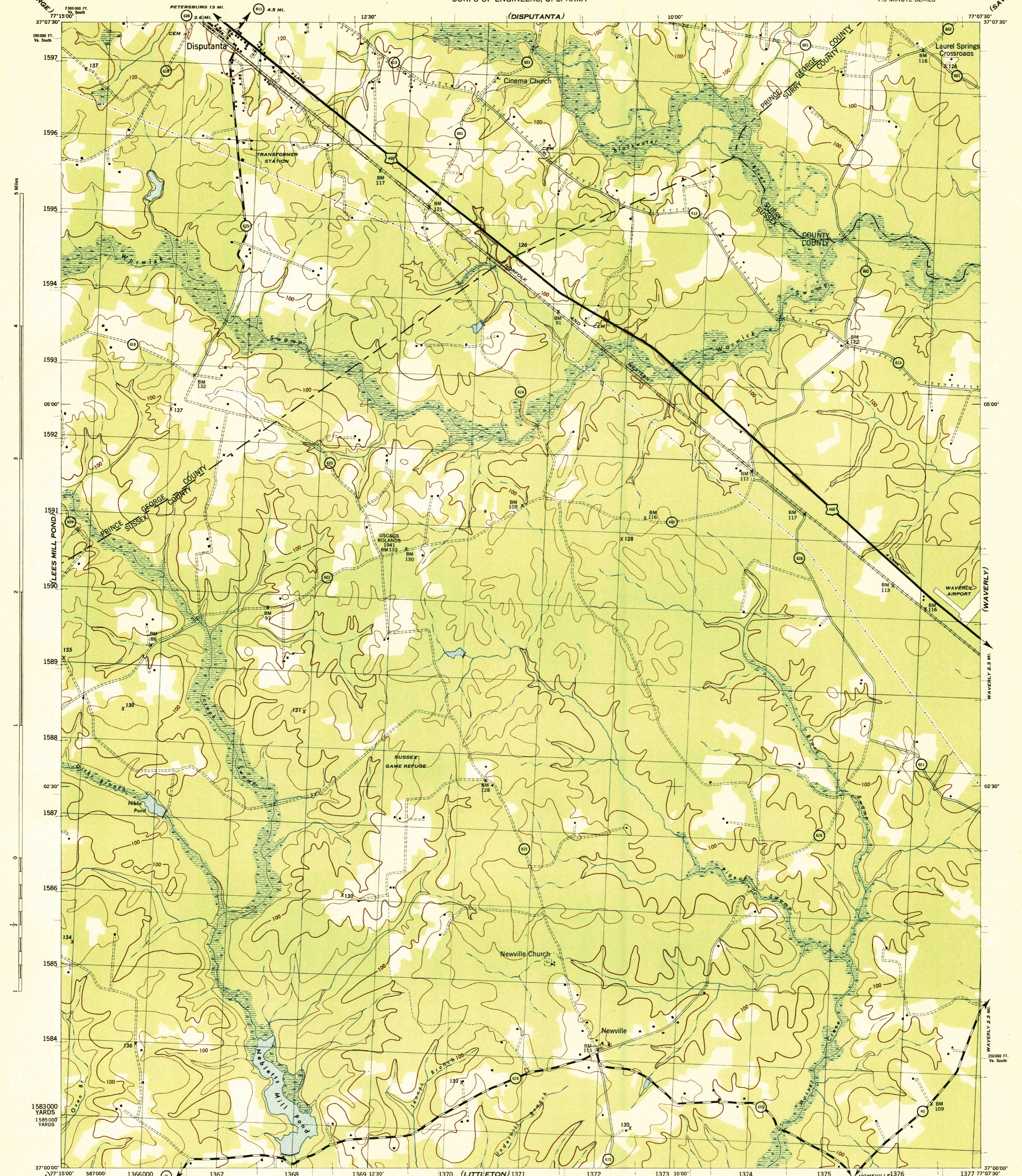
VIRGINIA 1:31,680

WAR DEPARTMENT
CORPS OF ENGINEERS, U. S. ARMY

NEBLETT'S MILL QUADRANGLE
7.5 MINUTE SERIES

(PRINCE GEORGE)

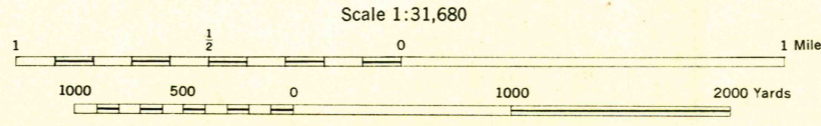
(SAVEDGE)



(JARRATT)

Prepared by U. S. Department of Agriculture, Soil Conservation Service,
under the direction of the Chief of Engineers, U. S. Army, 1943.
Horizontal and vertical control by U. S. C. & G. S., U. S. G. S., and S. C. S., 1943.
Topography by Soil Conservation Service, 1943.
Polyconic projection, North American datum, 1927.
This map complies with the National map standard accuracy requirements.

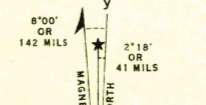
ROAD CLASSIFICATION 1943
Dependable hard-surface, heavy-duty road
Loose-surface graded, dry-weather road
Secondary, hard surface, all-weather road
Dirt Road
U. S. Route
State Route
More than two lanes indicated by note along road with tick at point of change



Scale 1:31,680

CONTOUR INTERVAL 20 FEET
DATUM IS MEAN SEA LEVEL

ONE THOUSAND YARD GRID COMPUTED FROM GRID SYSTEM FOR PROGRESSIVE MAPS
IN THE U. S. ZONE B U. S. C. B. D. S. SPECIAL PUBLICATION NO. 59
THE LAST THREE DIGITS OF THE GRID NUMBERS ARE OMITTED
THE OVERLAPPING GRID, ZONE A, IS INDICATED BY SHORT BROKEN TICKS CROSSING THE NEAT LINE
VIRGINIA STATE GRID, SOUTH ZONE, IS INDICATED BY DOTTED TICKS OUTSIDE THE NEAT LINE AT 500 FOOT INTERVALS
NOTE: OFFICERS USING THIS MAP WILL MAKE NECESSARY CORRECTIONS AND ADDITIONS WHICH COME
TO THEIR ATTENTION AND MAIL DIRECT TO THE CHIEF OF ENGINEERS, WASHINGTON, D. C.



APPROXIMATE MEAN
DECLINATION 1943
ANNUAL MAGNETIC CHANGE 30'
DECREASE

NEBLETT'S MILL, VA.
N3700-W7707.5/7.5

(MANN)