

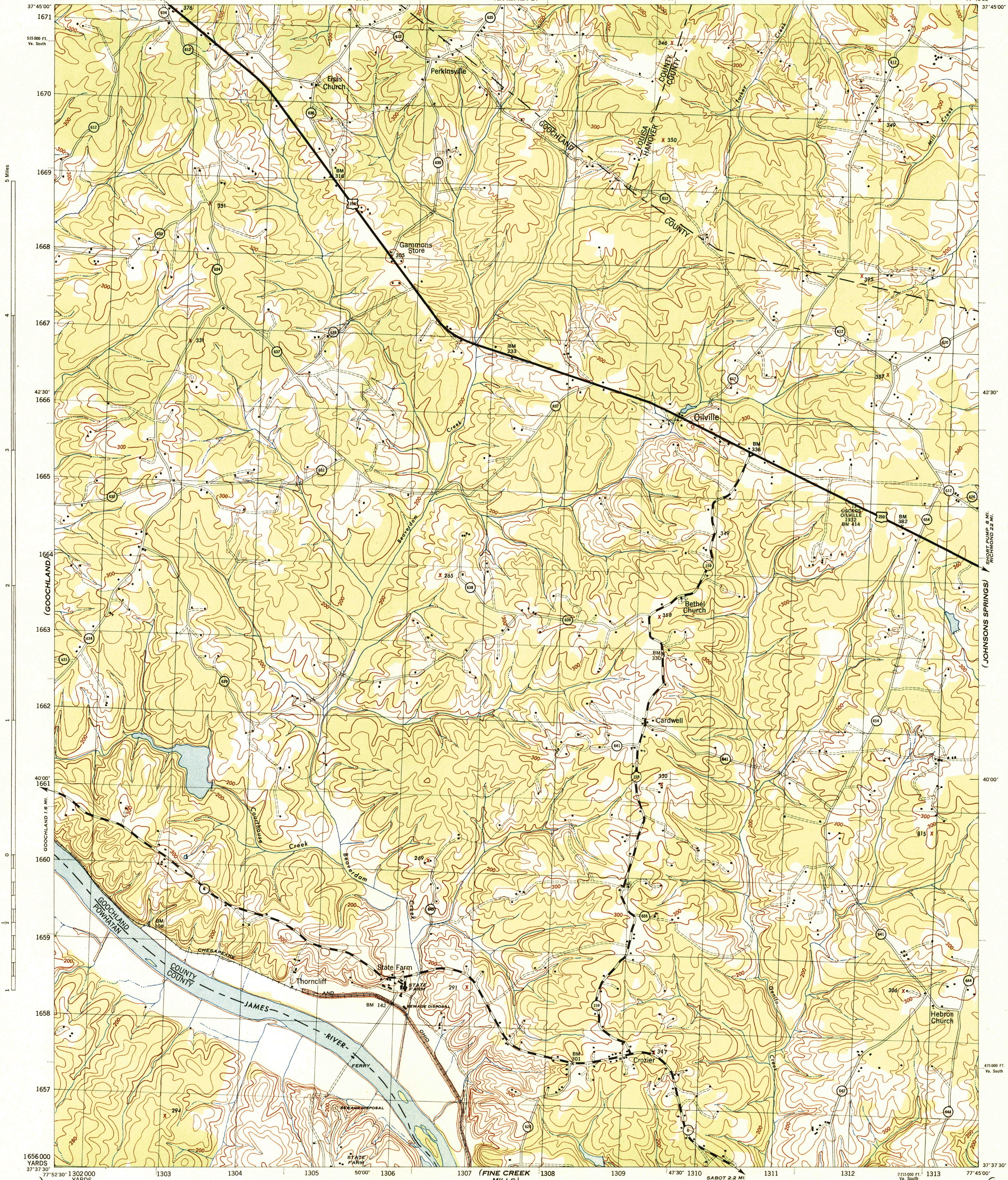
(SOUTH ANNA)

(MABELTON)

CHARLOTTESVILLE 41.8 MI. 2 185 000 FT. Va. South  
GUM SPRING 2.6 MI.

(DABNEYS)

77°45'00"



5 Miles

4

3

2

1

0

-1

-2

1656 000  
YARDS

Prepared by U. S. Department of Agriculture, Soil Conservation Service,  
under the direction of the Chief of Engineers, U. S. Army, 1943.  
Horizontal and vertical control by U. S. Coast and Geodetic Survey, U. S. Geological Survey, and S. C. S., 1942.  
Topography by S. C. S., 1943. Wide-angle photography for S. C. S., 1942.  
Polyconic projection, North American datum, 1927.  
This map complies with the National standard map accuracy requirements.

**ROAD CLASSIFICATION 1943**

Dependable hard-surface, heavy-duty road	Loose-surface graded, dry-weather road	U. S. Route 250
Secondary, hard-surface, all-weather road	Unimproved road	State Route 159
More than two lanes indicated by note along road with tick at point of change	3 LANE 2 LANE	

Scale 1:31,680

1 1/2 0 1/2 1 Mile

1000 500 0 1000 2000 Yards

**CONTOUR INTERVAL 20 FEET**  
**DATUM IS MEAN SEA LEVEL**

ONE THOUSAND YARD GRID COMPUTED FROM "GRID SYSTEM FOR PROGRESSIVE MAPS  
IN THE U. S." ZONE 8, U. S. C. & G. S. SPECIAL PUBLICATION NO. 59  
THE LAST THREE DIGITS OF THE GRID NUMBERS ARE OMITTED

VIRGINIA STATE GRID, SOUTH ZONE, IS INDICATED BY DOTTED TICKS OUTSIDE THE NEAT LINE AT 5000 FOOT INTERVALS

NOTE OFFICERS: THIS MAP WILL BEAM HEREON CORRECTIONS AND ADDITIONS WHICH COME  
TO THEIR ATTENTION AND MAIL DIRECT TO "THE CHIEF OF ENGINEERS, WASHINGTON, D. C."

APPROXIMATE MEAN  
DECLINATION 1942  
ANNUAL MAGNETIC CHANGE 30  
DECREASE

USGS  
Historical File  
Topographic Division

PERKINSVILLE, VA.  
N3737.5-W7745/7.5

(POWHTAN)

(MIDLOTHIAN)