

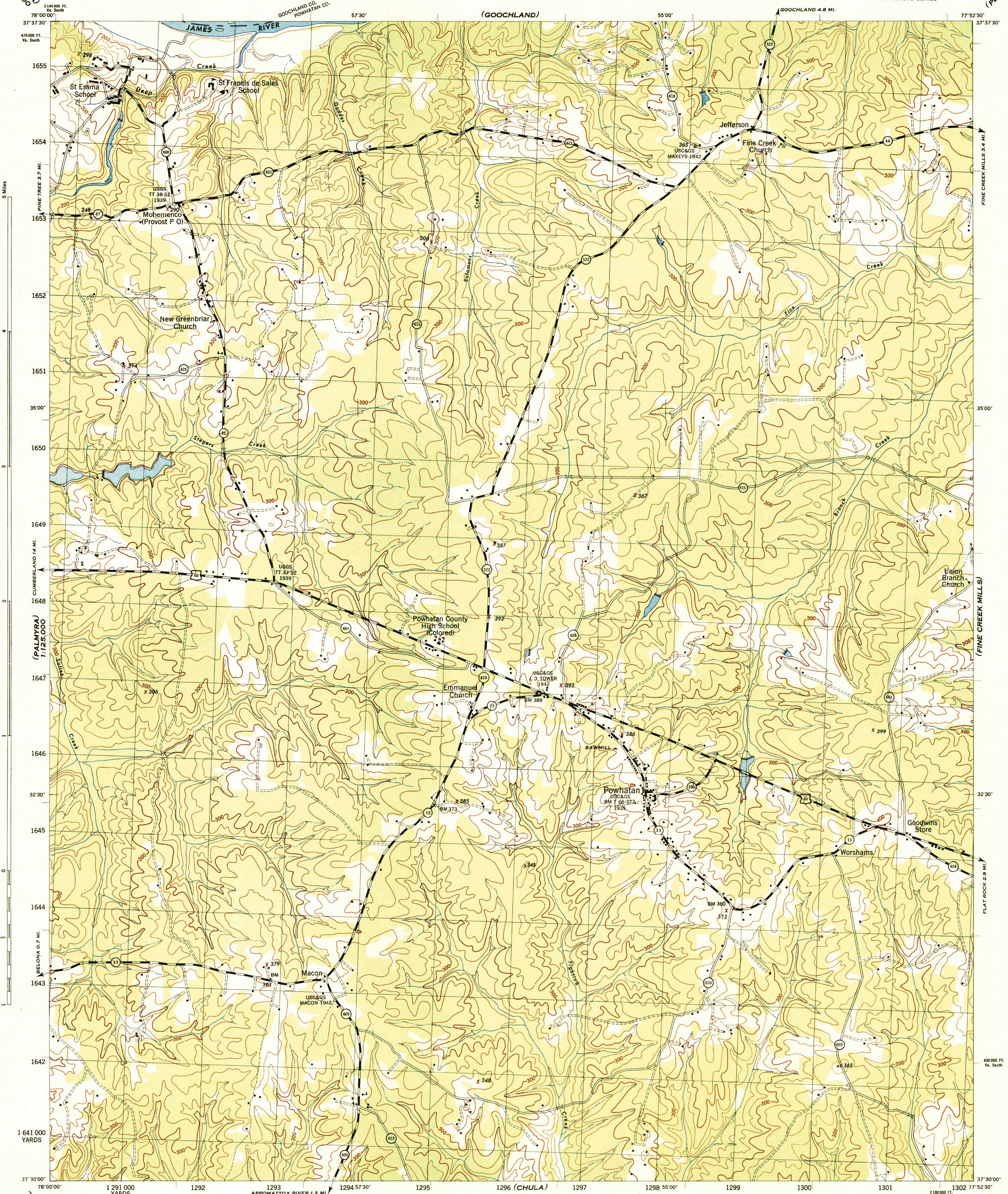
(PALMYRA)
1:125,000

VIRGINIA 1:31,680

WAR DEPARTMENT
CORPS OF ENGINEERS, U. S. ARMY

POWHATAN QUADRANGLE
7.5 MINUTE SERIES

(PERKINSVILLE)



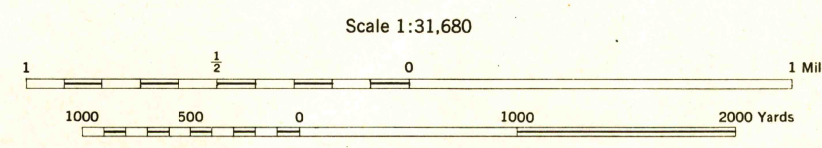
(FARMVILLE)
1:125,000

Prepared by U. S. Department of Agriculture, Soil Conservation Service, under the direction of the Chief of Engineers, U. S. Army, 1943.
 Horizontal and vertical control by U. S. Coast and Geodetic Survey, U. S. Geological Survey, and S. C. S., 1942.
 Topography by S. C. S., 1943. Wide-angle photography for S. C. S. 1942.
 Polyconic projection, North American datum, 1927.
 This map complies with the National standard map accuracy requirements.

ROAD CLASSIFICATION 1943

Dependable hard surface, heavy-duty road	Loose surface graded, dry-weather road	U. S. Route (60)
Secondary, hard surface, all-weather road	Unimproved road	State Route (27)

More than two lanes indicated by note along road with tick at point of change **3 LANE 4 LANE**

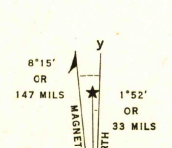


CONTOUR INTERVAL 20 FEET
 DATUM IS MEAN SEA LEVEL

ONE THOUSAND YARD GRID COMPUTED FROM "GRID SYSTEM FOR PROGRESSIVE MAPS IN THE U. S. ZONE B, U. S. C. & G. S. SPECIAL PUBLICATION NO. 59. THE LAST THREE DIGITS OF THE GRID NUMBERS ARE OMITTED.

VIRGINIA STATE GRID, SOUTH ZONE, IS INDICATED BY DOTTED TICKS OUTSIDE THE NEAT LINE AT 8000 FOOT INTERVALS.

NOTE: OFFICERS USING THIS MAP WILL MARK HEAVY CORRECTIONS AND ADDITIONS WHICH COME TO THEIR ATTENTION AND MAIL DIRECT TO "THE CHIEF OF ENGINEERS, WASHINGTON, D. C."



POWHATAN, VA.
 N3730-W7752.5/7.5

USGS
 His USGS File
 To Historical Division
 Topographic Division

(CLAYVILLE)