

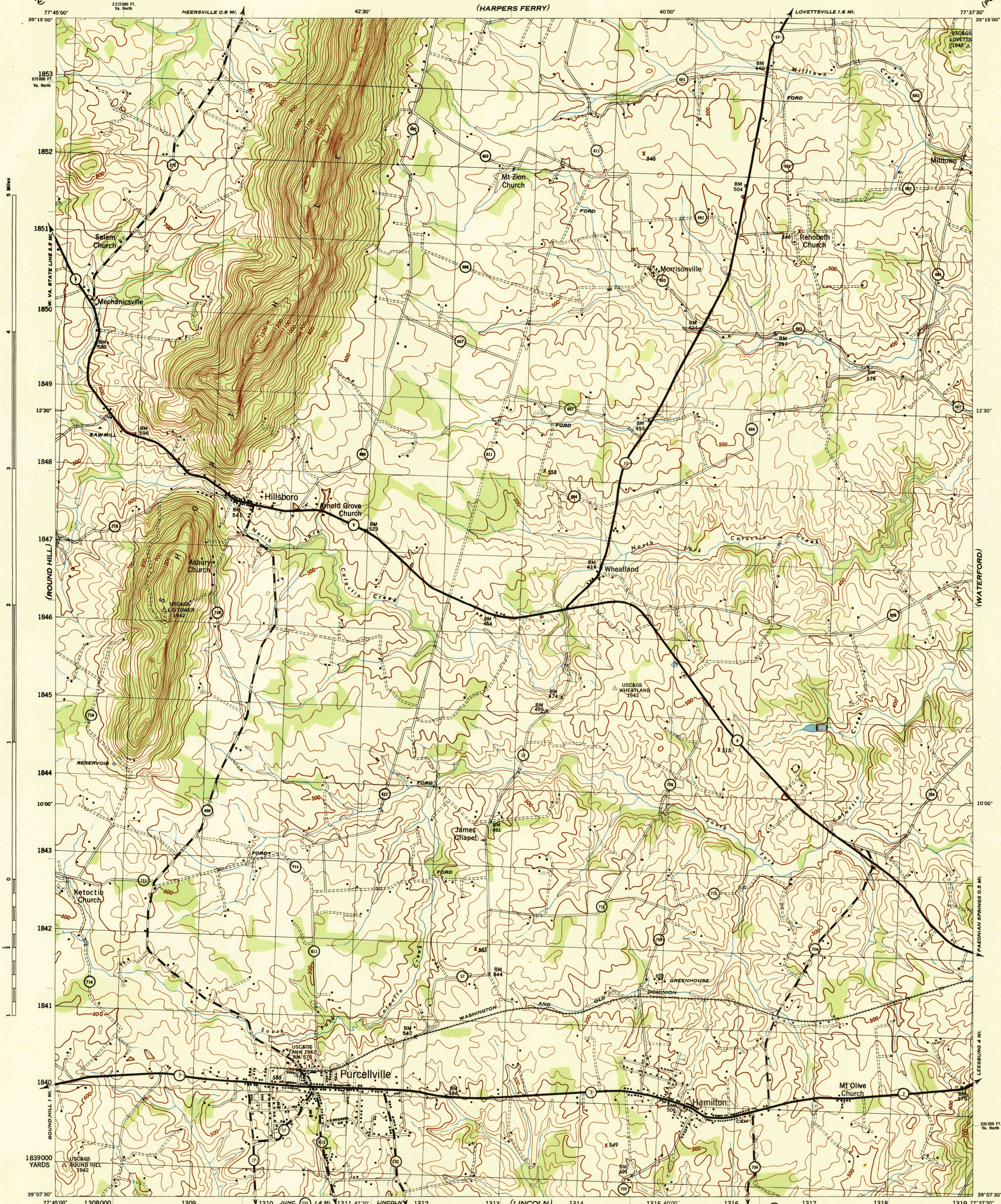
(CHARLES TOWN)

VIRGINIA 1:31,680
LOUDOUN COUNTY

WAR DEPARTMENT
CORPS OF ENGINEERS, U. S. ARMY

PURCELLVILLE QUADRANGLE
7.5 MINUTE SERIES

(POINT OF ROCKS)



(BLUEMONT)

Prepared by U. S. Department of Agriculture, Soil Conservation Service,
under the direction of the Chief of Engineers, U. S. Army, 1943.
Horizontal and vertical control by U. S. C. & G. S., U. S. G. S., and S. C. S., 1943.
Topography by S. C. S., 1943. Wide-angle photography for S. C. S., 1942.
Polyconic projection, North American datum, 1927.
This map complies with the National standard map accuracy requirements.

ROAD CLASSIFICATION 1943
Dependable hard-surface, heavy-duty road
Loose-surface graded, dry-weather road
U. S. Route
Secondary, hard-surface all-weather road
Dirt road
State Route
More than two lanes indicated by note along road with tick at point of change
LANE, 4 LANE

Scale 1:31,680
1000 500 0 1000 2000 Yards
CONTOUR INTERVAL 20 FEET
DATUM IS MEAN SEA LEVEL
ONE THOUSAND YARD GRID COMPUTED FROM GRID SYSTEM FOR PROGRESSIVE MAPS
IN THE U. S. ZONE B, U. S. C. & G. S. SPECIAL PUBLICATION NO. 59
THE LAST THREE DIGITS OF THE GRID NUMBERS ARE OMITTED
VIRGINIA STATE GRID, NORTH ZONE, IS INDICATED BY DOTTED TICKS OUTSIDE THE NEAT LINE AT 5000 FOOT INTERVALS
NOTE: OFFICERS USING THIS MAP WILL HAVE NECESSARY CORRECTIONS AND ADJUSTMENTS MADE
TO THEIR ATTENTION AND MAIL DIRECT TO THE CHIEF OF ENGINEERS, WASHINGTON, D. C.

APPROXIMATE MEAN
DECLINATION 1943
ANNUAL MAGNETIC CHANGE 30'
DECREASE

USGS
Historical File
Topographic Division

PURCELLVILLE, VA.
N3907.5-W7737.5/7.5

USGS LIBRARY - RESTON
3 1818 00512251 8

USGS Library
Reston, VA.
Topo Archive