

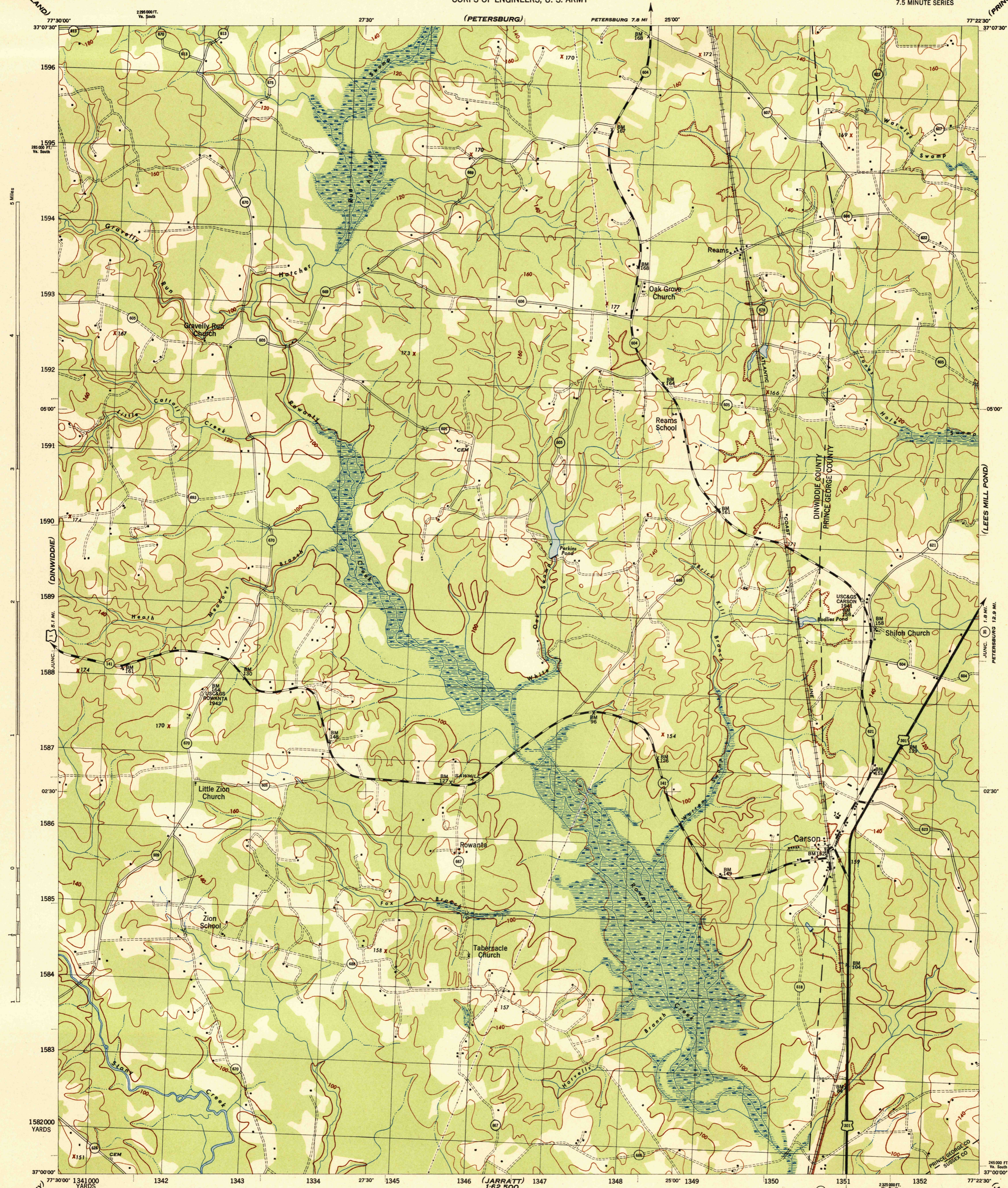
(SUTHERLAND)

VIRGINIA 1:31,680

WAR DEPARTMENT  
CORPS OF ENGINEERS, U. S. ARMY

REAMS QUADRANGLE  
7.5 MINUTE SERIES

(PRINCE GEORGE)



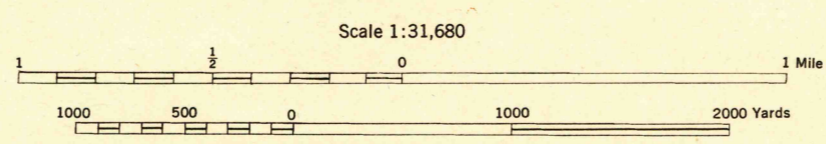
(MCKENNEY)  
1:62,500

Prepared by U. S. Department of Agriculture, Soil Conservation Service, under the direction of the Chief of Engineers, U. S. Army, 1943.  
Horizontal and vertical control by U. S. Coast and Geodetic Survey, U. S. Geological Survey, and S. C. S., 1943.  
Topography by S. C. S., 1943. Wide-angle photography by S. C. S., 1942.  
Polyconic projection, North American datum, 1927.  
This map complies with the National standard map accuracy requirements.

**ROAD CLASSIFICATION 1943**

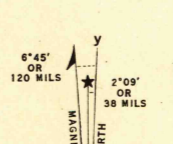
Dependable hard-surface, heavy-duty road	Loose-surface graded, dry-weather road	U. S. Route
Secondary hard-surface, all-weather road	Dirt road	State Route

More than two lanes indicated by note along road with tick at point of change **3 LANE 4 LANE**



CONTOUR INTERVAL 20 FEET  
DATUM IS MEAN SEA LEVEL  
ONE THOUSAND YARD GRID COMPUTED FROM "GRID SYSTEM FOR PROGRESSIVE MAPS IN THE U. S." ZONE B. U. S. C. & G. S. SPECIAL PUBLICATION NO. 59. THE LAST THREE DIGITS OF THE GRID NUMBERS ARE OMITTED.

VIRGINIA STATE GRID, SOUTH ZONE, IS INDICATED BY DOTTED TICKS OUTSIDE THE NEAT LINE AT 5000 FOOT INTERVALS.  
NOTE: OFFICERS USING THIS MAP WILL MAKE NECESSARY CORRECTIONS AND ADJUSTMENTS WHICH COME TO THEIR ATTENTION AND WILL REPORT TO THE CHIEF OF ENGINEERS, WASHINGTON, D. C.



APPROXIMATE MEAN DECLINATION 1943  
ANNUAL MAGNETIC CHANGE 30" DECREASE

REAMS, VA.  
N3700-W7722.5/7.5

USCS  
Historical File  
Topographic Division  
Topographic Division