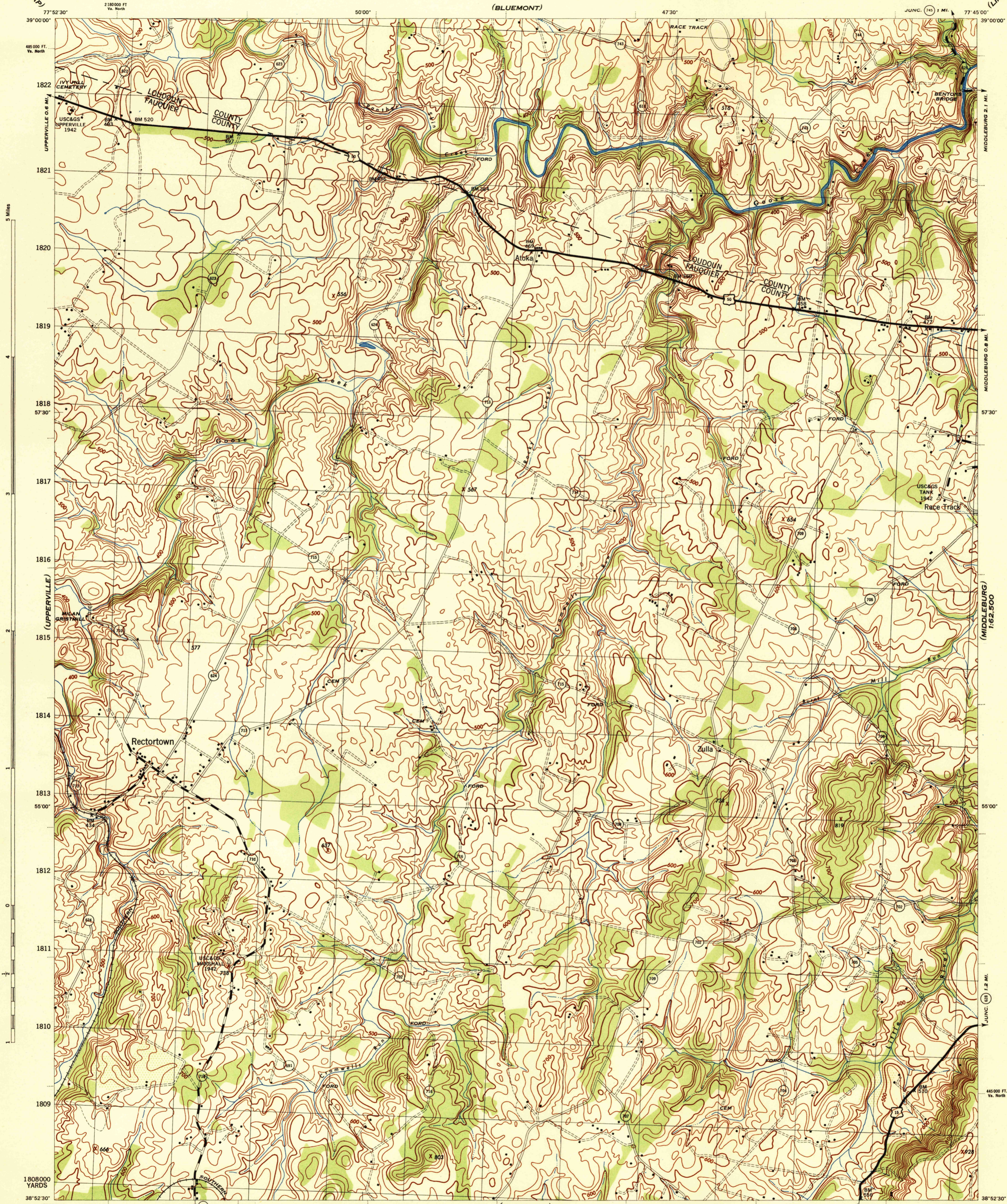


(ASHBY GAP)

(BLUEMONT)

(LINCOLN)



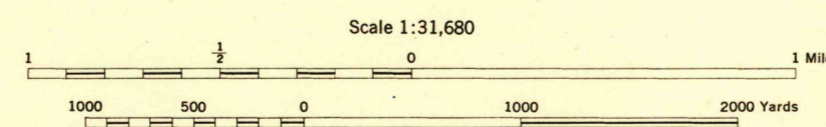
(ORLEAN)

(MIDDLEBURG 1:62,500)

Prepared by U. S. Department of Agriculture, Soil Conservation Service, under the direction of the Chief of Engineers, U. S. Army, 1943. Horizontal and vertical control by U. S. C. & G. S., U. S. G. S., and S. C. S., 1943. Topography by S. C. S., 1943. Wide-angle photography for S. C. S., 1942. Polyconic projection, North American datum, 1927. This map complies with the National standard map accuracy requirements.

ROAD CLASSIFICATION 1943

Dependable hard-surface, heavy-duty road	Loose-surface graded, dry-weather road	U. S. Route	50
Secondary, hard-surface, all-weather road	Dirt road	State Route	700
More than two lanes indicated by note along road with tick at point of change		3 LANE 4 LANE	

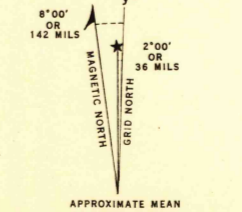


CONTOUR INTERVAL 20 FEET
DATUM IS MEAN SEA LEVEL

ONE THOUSAND YARD GRID COMPUTED FROM GRID SYSTEM FOR PROGRESSIVE MAPS IN THE U. S. ZONE B, U. S. C. & G. S. SPECIAL PUBLICATION NO. 39. THE LAST THREE DIGITS OF THE GRID NUMBERS ARE OMITTED.

VIRGINIA STATE GRID, NORTH ZONE, IS INDICATED BY DOTTED TICKS OUTSIDE THE NEAT LINE AT 5000 FOOT INTERVALS.

NOTE: OFFICERS USING THIS MAP WILL WANT READER CORRECTIONS AND ADDITIONS WHICH COME TO THEIR ATTENTION AND MAIL THEM TO THE CHIEF OF ENGINEERS, WASHINGTON, D. C.



RECTORTOWN, VA.
N3852.5-W7745.7/5

USCS
Historical File
Topographic Division