

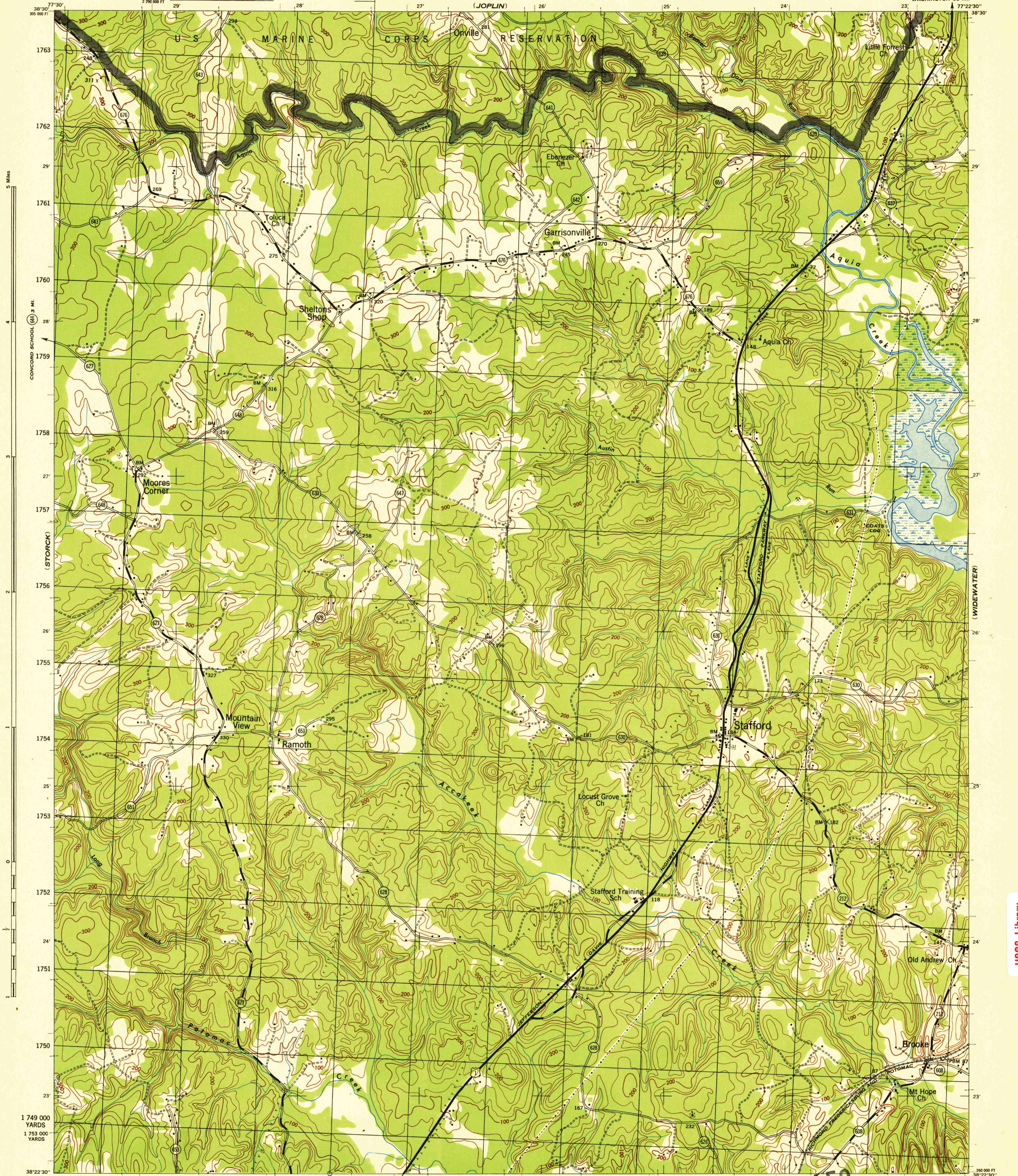
(SOMERVILLE)

VIRGINIA 1:31,680

WAR DEPARTMENT
CORPS OF ENGINEERS, U. S. ARMY

STAFFORD QUADRANGLE
7 1/2-MINUTE SERIES

(QUANTICO)



5 Miles

CONCORD SCHOOL (64) 3 MI.

(STORCK)

1 749 000 YARDS
1 753 000 YARDS

(SALEM CHURCH)

(WIDEWATER)

(PASSapatanzy)

Prepared under direction of the Chief of Engineers, U. S. Army, 1944.
By the Mapping Section, Office Division Engineer, South Atlantic Division.
Control by Corps of Engineers, U. S. Geological Survey, U. S. Coast and Geodetic Survey
and U. S. Soil Conservation Service.
Topography by Stereophotogrammetric methods (Multiples).
Aerial photography by 1st Mapping Group, U. S. Army, 1943.
Polyconic projection, 1927 North American datum.

ROAD CLASSIFICATION 1943

Dependable hard-surface, heavy-duty road. Loose-surface graded, dry weather road. U. S. Route

Secondary, hard-surface, all-weather road. Dirt Road. State Route

More than two lanes indicated by note along road with tick at point of change. 3 LANE, 4 LANE

THIS MAP COMPLIES WITH THE NATIONAL STANDARD MAP ACCURACY REQUIREMENTS.

Scale 1:31,680
1 000 0 1000 2000 Yards

CONTOUR INTERVAL 20 FEET
DATUM IS MEAN SEA LEVEL

ONE THOUSAND YARD GRID COMPUTED FROM GRID SYSTEM FOR PROGRESSIVE MAPS
IN THE U. S. ZONE 18 U. S. C. & G. S. SPECIAL PUBLICATION NO. 59
THE LAST THREE DIGITS OF THE GRID NUMBERS ARE OMITTED
THE OVERLAPPING GRID ZONE A, IS INDICATED BY SHORT BROKEN LINES CROSSING THE NEXT LINE
THROUGHOUT THIS GRID NORTH IS INDICATED BY NOTCHED TICKS
OUTSIDE THE NEXT LINE AT 500 FOOT INTERVALS
NOTE: OFFICERS USING THIS MAP WILL MAKE NECESSARY CORRECTIONS AND ADJUSTMENTS WHICH COME
TO THEIR ATTENTION AND MAKE DIRECT TO THE CHIEF OF ENGINEERS, WASHINGTON, D. C.

HISTORICAL FILES
DO NOT REMOVE

SUPERSEDED

HISTORICAL FILES

FILE COPY

RETURN TO CENTRAL FILE

(DO NOT REMOVE)

STAFFORD, VA.
N3822.5-W7722.5/7.5
EDITION OF 1944

USGS Library
Reston, VA.
Topo Archive

846