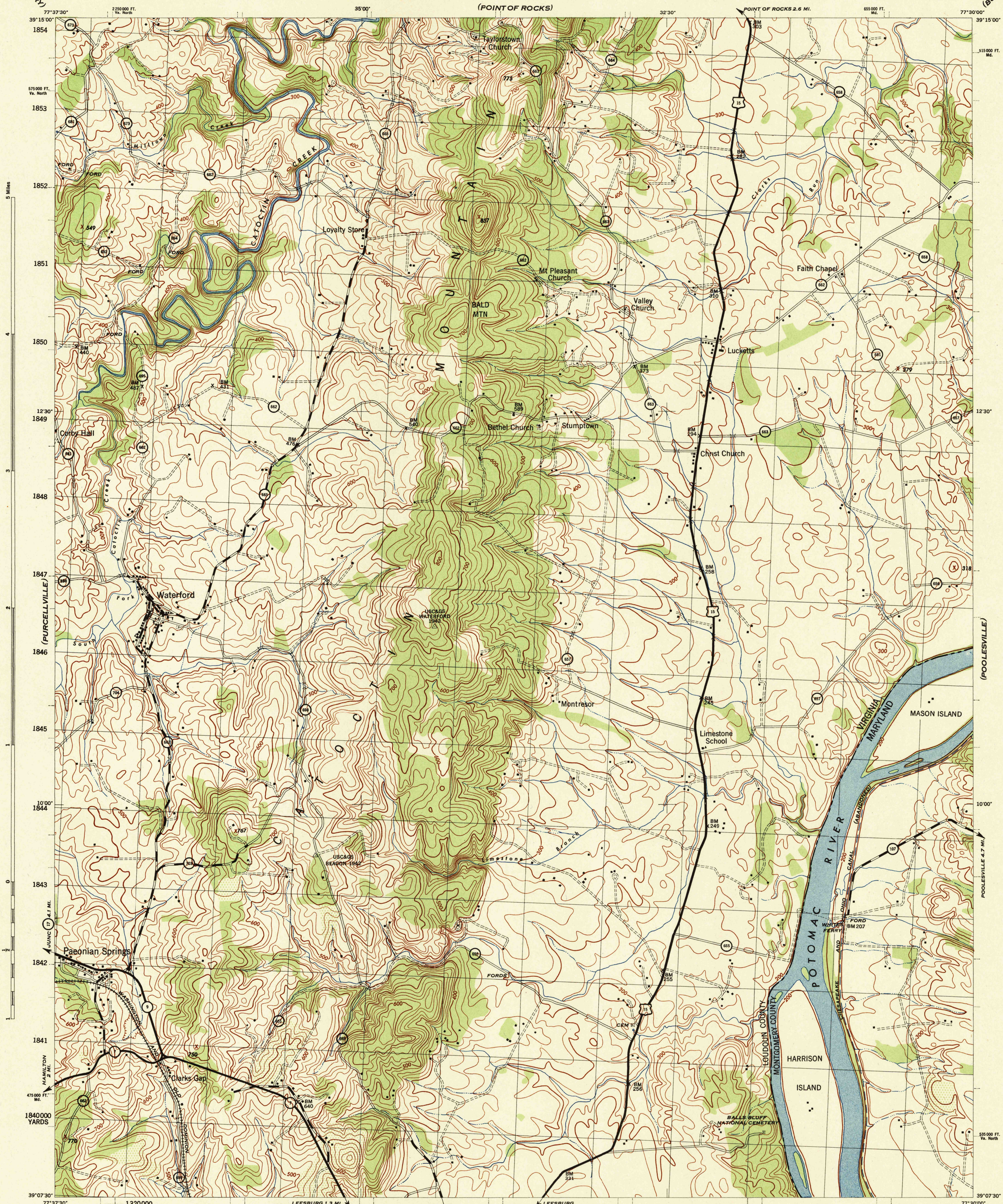


VIRGINIA - MARYLAND 1:31,680

WAR DEPARTMENT  
CORPS OF ENGINEERS, U. S. ARMY  
(POINT OF ROCKS)

WATERFORD QUADRANGLE  
7.5 MINUTE SERIES



Prepared by U. S. Department of Agriculture, Soil Conservation Service,  
under the direction of the Chief of Engineers, U. S. Army, 1943.  
Horizontal and vertical control by U. S. C. & G. S., U. S. G. S., and S. C. S., 1943.  
Topography by S. C. S., 1943. Wide-angle photography for S. C. S., 1942.  
Polyconic projection, North American datum, 1927.  
This map complies with the National standard map accuracy requirements.

ROAD CLASSIFICATION 1943  
Dependable hard-surface, heavy-duty road ——— U. S. Route 15  
Secondary hard-surface, all-weather road ——— State Route 7  
Loose-surface graded, dry-weather road ———  
Dirt road ———  
More than two lanes indicated by note along road with tick at point of change ——— LANE 4 LANE

Scale 1:31,680  
1000 500 0 1000 2000 Yards  
CONTOUR INTERVAL 20 FEET  
DATUM IS MEAN SEA LEVEL  
ONE THOUSAND YARD GRID COMPUTED FROM "GRID SYSTEM FOR PROGRESSIVE MAPS  
IN THE U. S. ZONE B, U. S. C. & G. S. SPECIAL PUBLICATION NO. 59  
THE LAST THREE DIGITS OF THE GRID NUMBERS ARE OBTAINED  
THE STATE GRID IS INDICATED FOR VIRGINIA, NORTH ZONE, BY...TICKS  
FOR MARYLAND BY...TICKS OUTSIDE THE NEAT LINE AT 5000 FOOT INTERVALS  
NOTE: OFFICERS USING THIS MAP WILL WANT HEREON CORRECTIONS AND ADDITIONS WHEN COME  
TO THEIR ATTENTION AND MAIL DIRECT TO "THE CHIEF OF ENGINEERS, WASHINGTON, D. C."

APPROXIMATE MEAN  
DECLINATION 1943  
ANNUAL MAGNETIC CHANGE 30"  
DECREASE  
8°15' OR  
147 MILS  
MAGNETIC NORTH  
GRID NORTH

WATERFORD, VA. MD.  
N3907.5-W7730/7.5

U. S. G. S.  
FILE COPY  
Incorporation and Editing