

RETAINED COPY
This sheet must not be taken
from the files without an order
from the Chief Geographer,

DEPARTMENT OF THE INTERIOR
ALBERT B. FALL, SECRETARY
U. S. GEOLOGICAL SURVEY
GEORGE OTIS SMITH, DIRECTOR

768-N-1-W/2
TOPOGRAPHY
STATE OF VIRGINIA
GEOLOGICAL SURVEY
THOMAS L. WATSON, DIRECTOR
(Whitesburg)

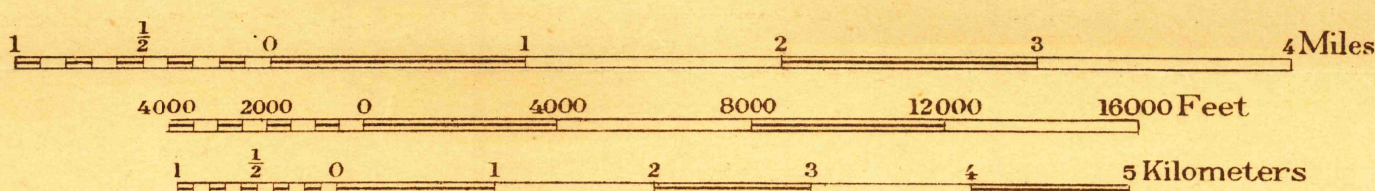
Advance sheet.
Subject to correction.
APR 19 1921

VIRGINIA
BIG STONE GAP QUADRANGLE



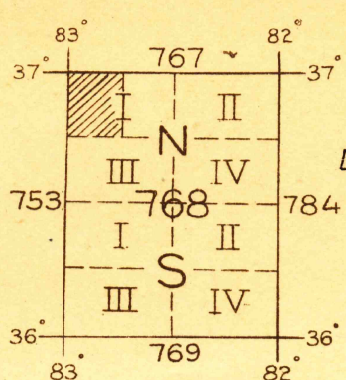
C. H. Birdseye, Chief, Topographic Engineer
Frank Sutton, Topographic Engineer in charge
Topography by T. F. Slaughter, W. K. McKinley,
and H. R. Kilmer
Control by L. F. Biggs, S. R. Archer, Fred McLaughlin,
and Stonega Coal and Coke Co.
Surveyed in 1920

SURVEYED IN COOPERATION WITH THE STATE OF VIRGINIA



Contour interval 50 feet.
Datum is mean sea level.

TRUE NORTH
MAGNETIC NORTH
APPROXIMATE MEAN
DECLINATION 1920



BIG STONE GAP
Edition of 1921