

DEPARTMENT OF THE INTERIOR
ALBERT B. FALL, SECRETARY
U. S. GEOLOGICAL SURVEY
GEORGE OTIS SMITH, DIRECTOR

819-N-11-W/2
TOPOGRAPHY
STATE OF VIRGINIA
GEOLOGICAL SURVEY
THOMAS L. WATSON, DIRECTOR

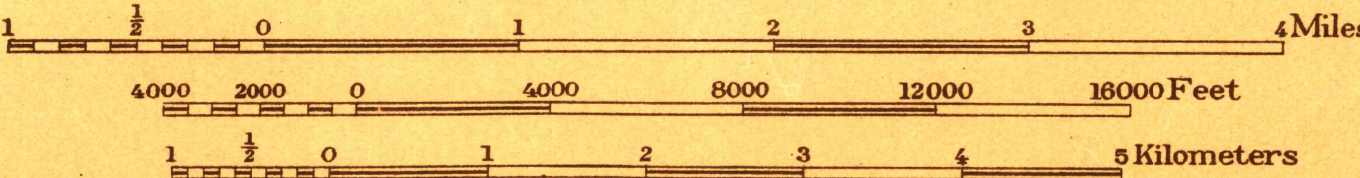
VIRGINIA
(PITTSYLVANIA COUNTY)
CHATHAM QUADRANGLE

Advance sheet.
Subject to correction.

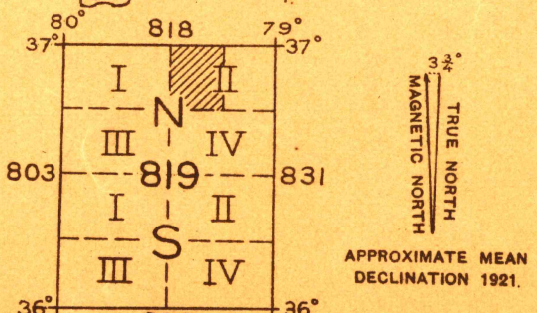


C. H. Birdseye, Chief Topographic Engineer.
Frank Sutton, Division Topographic Engineer.
Topography by T. F. Slaughter and R. H. Runyan.
Control by F. J. McMaugh, J. L. Lenovitz, Crawford Dickey,
and A. H. Horton.
Surveyed in 1921.

SURVEYED IN COOPERATION WITH THE STATE OF VIRGINIA



Contour interval 20 feet.
Datum is mean sea level.



HISTORICAL FILES
Polyconic projection, North American datum.
5000 yard grid based upon U. S. (DO NOT REMOVE)
FILE COPY
RETURN TO CENTRAL FILE
CHATHAM