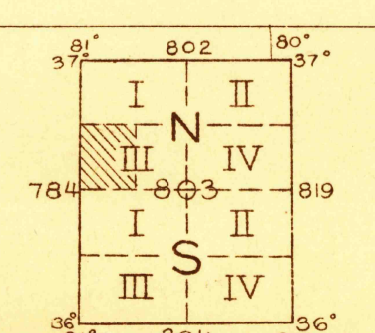
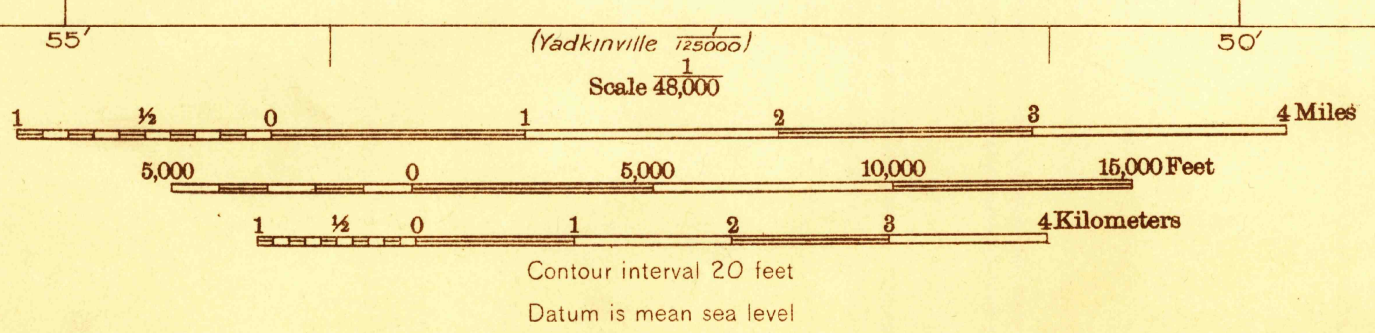




36°45'
36°40'
36°35'
36°30'

15 Miles
14
13
12
11
10
9
8
7
6
5
4
3
2
1
0
1
2
3
4
5
6
7
8
9
10
11
12
13
14
15

1 515 000
YARDS
1005 000
YARDS
Albert Pike, Division Engineer
Topography by R.C. Seitz, J.H. Wilke, C.W. Buckley
G.F. Westinghouse, J.A. Law, and C.B. McAdams
Control by U. S. Geological Survey
Surveyed in 1930-1931



HISTORICAL FILES
Polyconic projection, North Carolina
5000 yard grid based upon U. S. zone system, B
FILE CO. (DO NOT REMOVE)
RETURN TO CENTRAL FILE
GALAX, VA - NC.