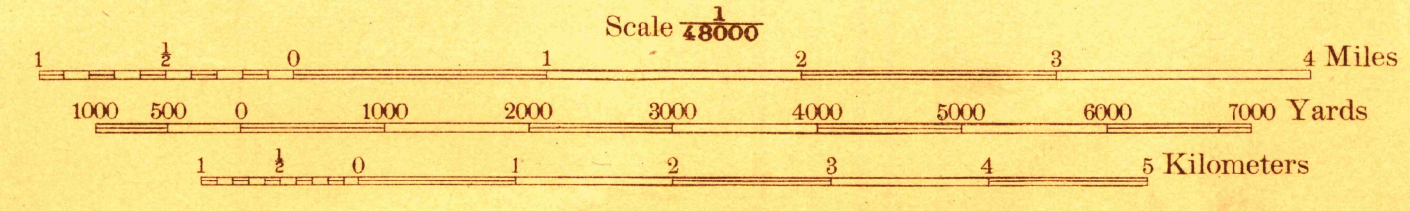
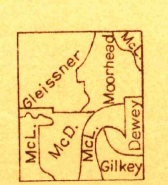
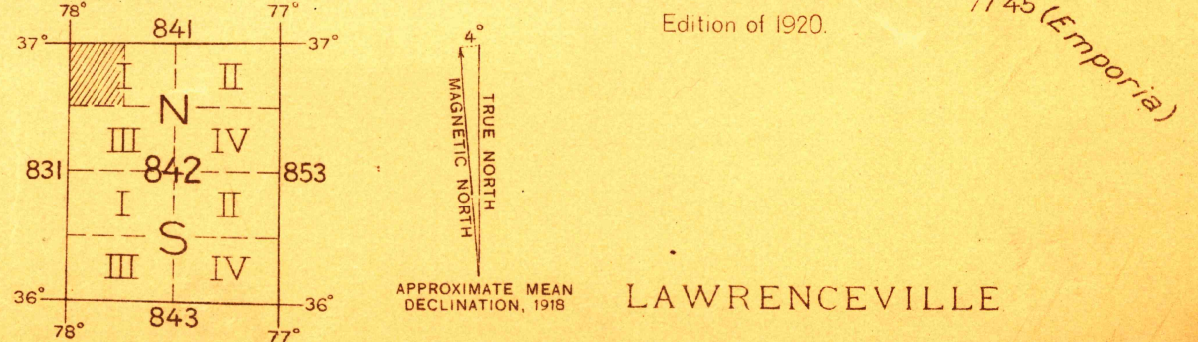


R. B. Marshall, Chief Geographer.
T. G. Gerding, Geographer in charge.
Topography by Fred McLaughlin, H. L. McDonald,
M. J. Gleissner, Bishop Moorhead, A. H. Dewey
and H. J. Gilkey.
Control by J. C. Fales, A. C. Schilling, and
C. R. French.
Surveyed in 1918.



Contour interval 20 feet.
Datum is mean sea level.



SURVEYED IN COOPERATION WITH THE WAR DEPARTMENT
AND THE STATE OF VIRGINIA.

Edition of 1920.
APPROXIMATE MEAN DECLINATION, 1918
LAWRENCEVILLE