

U.S.G.A.
FILE COPY
Interpolation and Editing

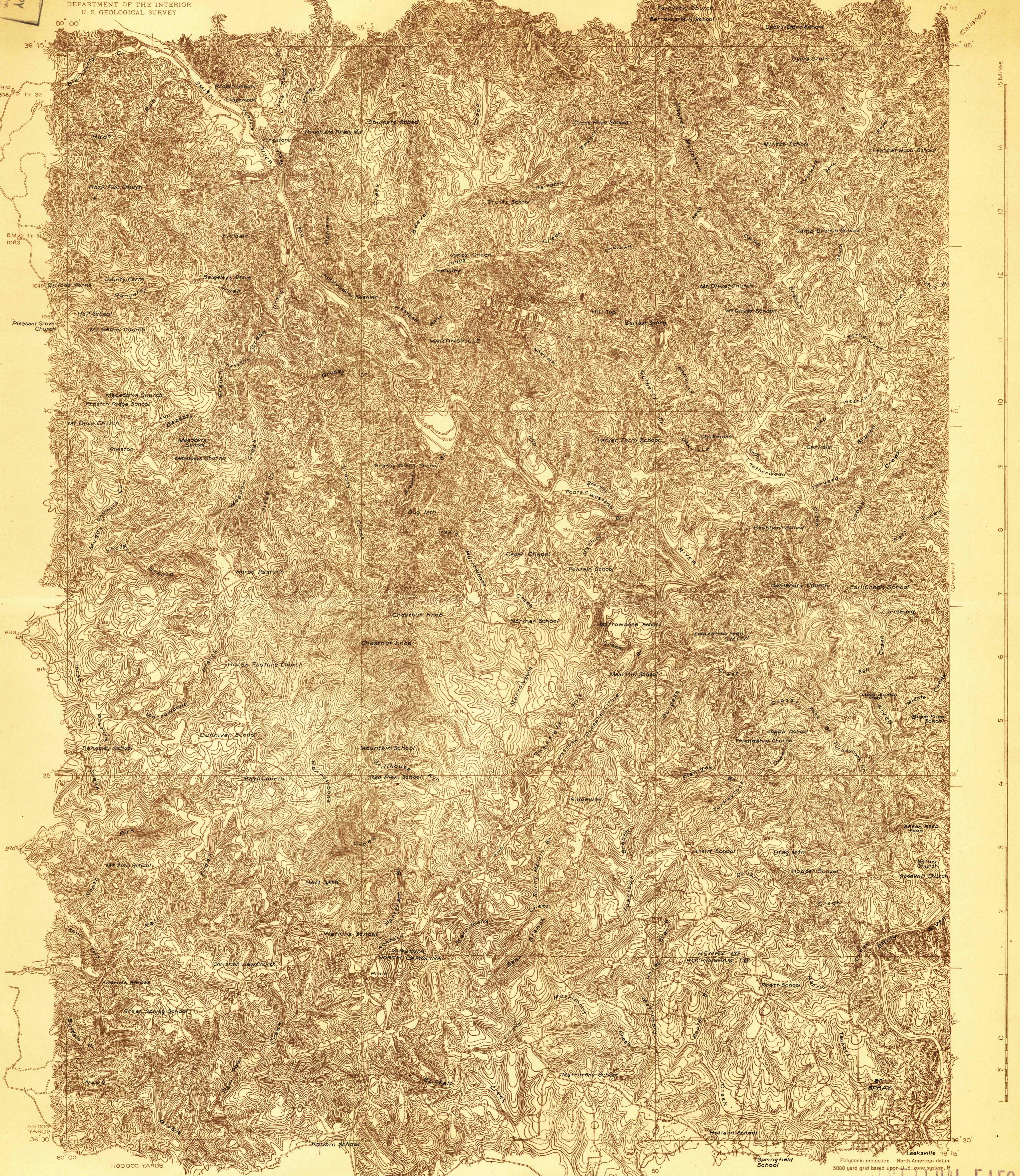
This sheet must not be taken from the files without an order from the Chief Topographic Engineer.

819-N-III-W/2
STATE OF VIRGINIA
GEOLOGICAL SURVEY
ALBERT W. GILES, ACTING DIRECTOR

Advance sheet
Subject to correction

TOPOGRAPHIC FILES
VIRGINIA-NORTH CAROLINA
MARTINSVILLE QUADRANGLE
AUG 25 1925

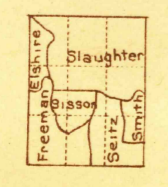
DEPARTMENT OF THE INTERIOR
U. S. GEOLOGICAL SURVEY



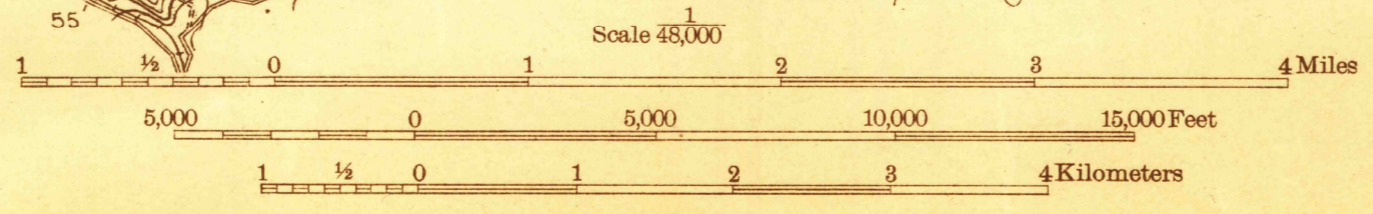
BM 905 F Tr 32
BM F Tr 31 1083
1045
1054
105
100
843
914
35
970
1515 000
YARDS
36 30
80 00

50
79 45
36 45
15 Miles
14
13
12
11
10
9
8
7
6
5
4
3
2
1
0
36 30

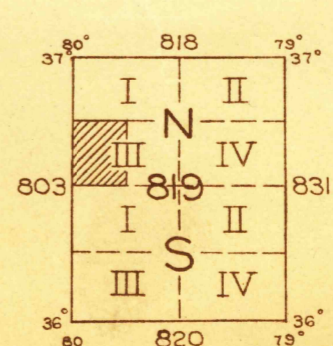
Topography by T. F. Slaughter, Olinus Smith, R.C. Seitz,
G.E. Stason, Elmer Elshire, and L.A. Freeman
Control in part by railroad valuation surveys
Surveyed in 1924



APPROXIMATE MEAN
DECLINATION, 1924



Contour interval 20 feet
Datum is mean sea level



HISTORICAL FILES
U.S.G.S.
FILE COPY (DO NOT REMOVE)
Interpolation and Editing
RETURN TO CENTRAL FILE

MARTINSVILLE, VA-N.C.