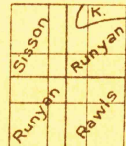


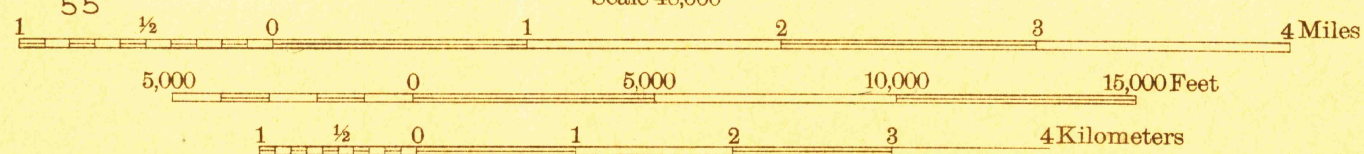
Advance sheet
Subject to correction



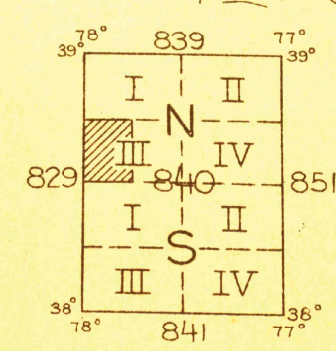
Glenn S. Smith, Division Engineer
Topography by J.M. Rawls, R.H. Runyan, G.E. Sisson, and H.R. Kilmer
Control by U. S. Geological Survey U. S. Coast and Geodetic Survey
and Corps of Engineers, U. S. Army
Surveyed in 1927



TRUE NORTH
MAGNETIC NORTH
APPROXIMATE MEAN
DECLINATION, 1927



Contour interval 20 feet
Datum is mean sea level



Polyconic projection, North American datum
5000 yard grid based upon U. S. zone system, B

FILE COPY

RETURN TO CENTRAL FILE
REMINGTON, VA

Gordonville 725000

(Warrenton 725000)

15 Miles