

842-N-III-W/2
TOPOGRAPHY

Advance sheet.
Subject to correction.

DEPARTMENT OF THE INTERIOR
FRANKLIN K. LANE, SECRETARY
U. S. GEOLOGICAL SURVEY
GEORGE OTIS SMITH, DIRECTOR

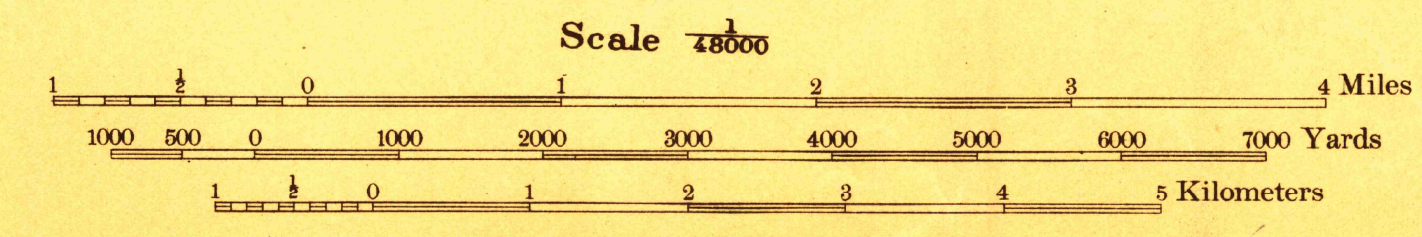
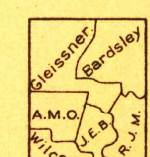
WAR DEPARTMENT
CORPS OF ENGINEERS, U. S. ARMY

STATE OF VIRGINIA
GEOLOGICAL SURVEY
THOMAS L. WATSON, DIRECTOR

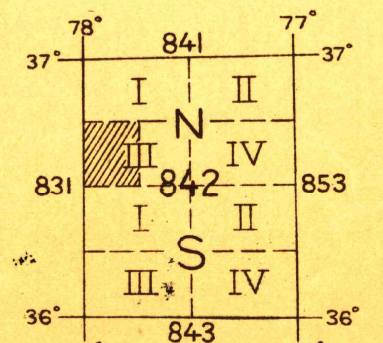
VIRGINIA-NORTH CAROLINA
WHITE PLAINS QUADRANGLE



R. B. Marshall, Chief Geographer.
T. G. Gerding, Geographer in charge.
Topography by J. G. Staack, J. E. Blackburn, C. E. Barsley,
M. J. Gleissner, A. M. Ockerblad, R. F. Wilcox, and
R. J. McManamy.
Control by J. C. Fales, C. R. French, and H. J. Switzer.
Surveyed in 1918-1919.
SURVEYED IN COOPERATION WITH THE WAR DEPARTMENT
AND THE STATE OF VIRGINIA.



Contour interval 20 feet.
Datum is mean sea level.



TRUE NORTH
MAGNETIC NORTH
APPROXIMATE MEAN
DECLINATION, 1919.

Edition of 1919.
FILE COPY
RETURN TO CENTRAL FILE
WHITE PLAINS