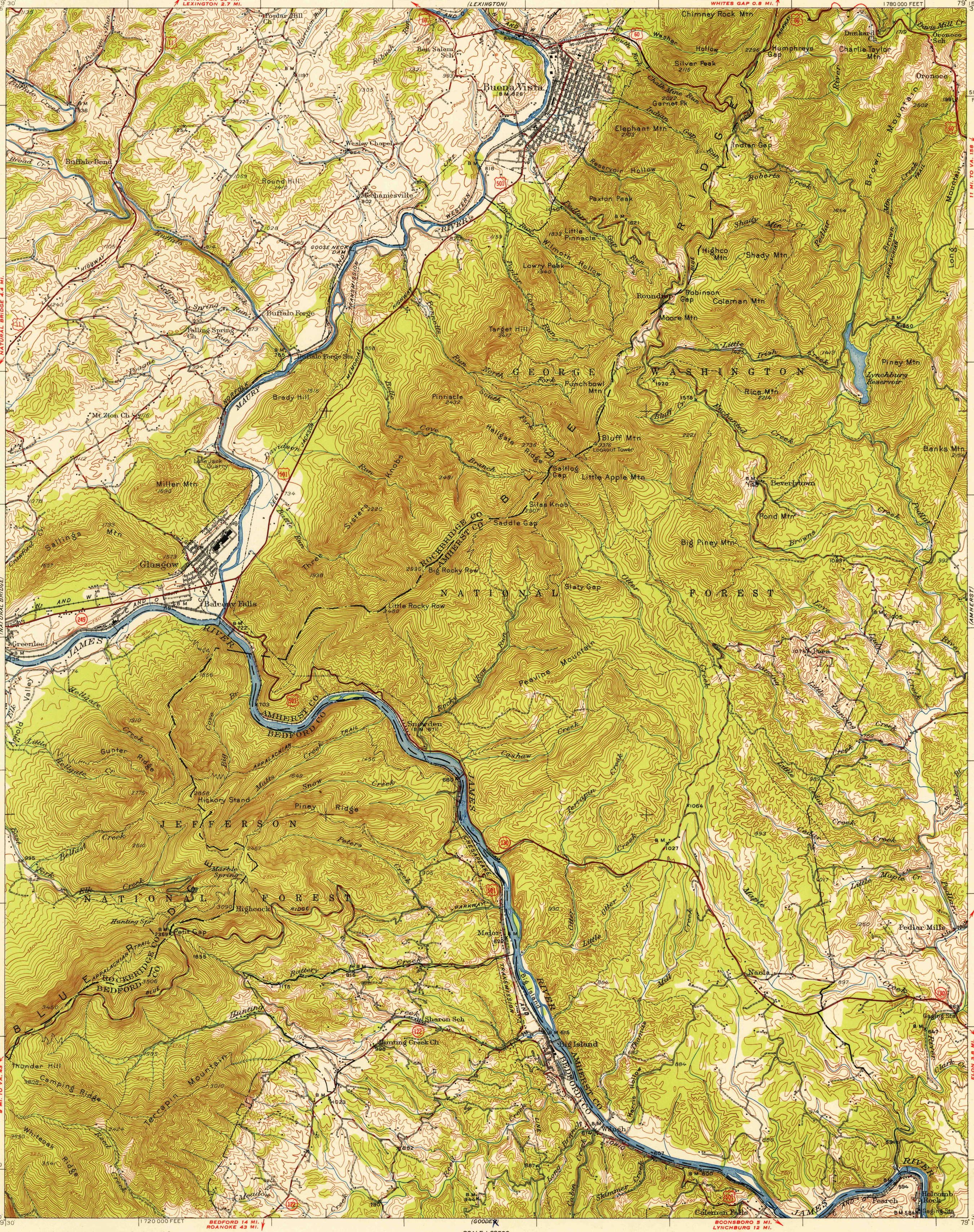


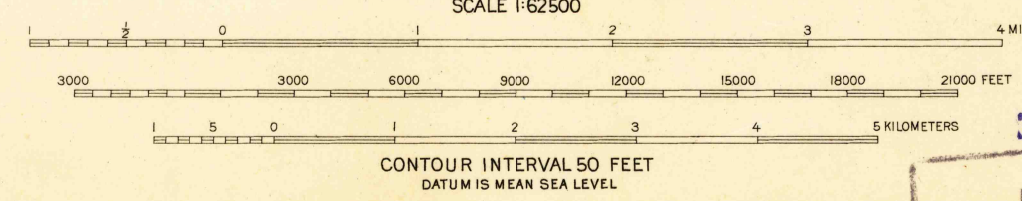
UNITED STATES
DEPARTMENT OF THE INTERIOR
GEOLOGICAL SURVEY

BUENA VISTA QUADRANGLE
VIRGINIA
15-MINUTE SERIES (TOPOGRAPHIC)
1:62,500

U.S.G.S.
FILE COPY
Inspection and Editing



Maped, edited, and published by the Geological Survey
Surveyed by plane-table methods in 1933-1935
Revised in 1950
Polyconic projection, 1927 North American datum
11000-foot grid based on Virginia coordinate system,
south zone



USGS
Historical File
Topographic Division

ROAD CLASSIFICATION
HARD-SURFACE ALL WEATHER ROADS DRY WEATHER ROADS
Heavy-duty... **2 LANE** Improved dirt...
Medium-duty... **2 LANE** Unimproved dirt...
Loose-surface, graded or narrow hard-surface...
U. S. Route State Route

U.S.G.S.
FILE COPY
Inspection and Editing

BUENA VISTA, VA.
N3730-W7915/15
EDITION OF 1952

FOR SALE BY U. S. GEOLOGICAL SURVEY, WASHINGTON 25, D. C.
A FOLDER DESCRIBING TOPOGRAPHIC MAPS AND SYMBOLS IS AVAILABLE ON REQUEST