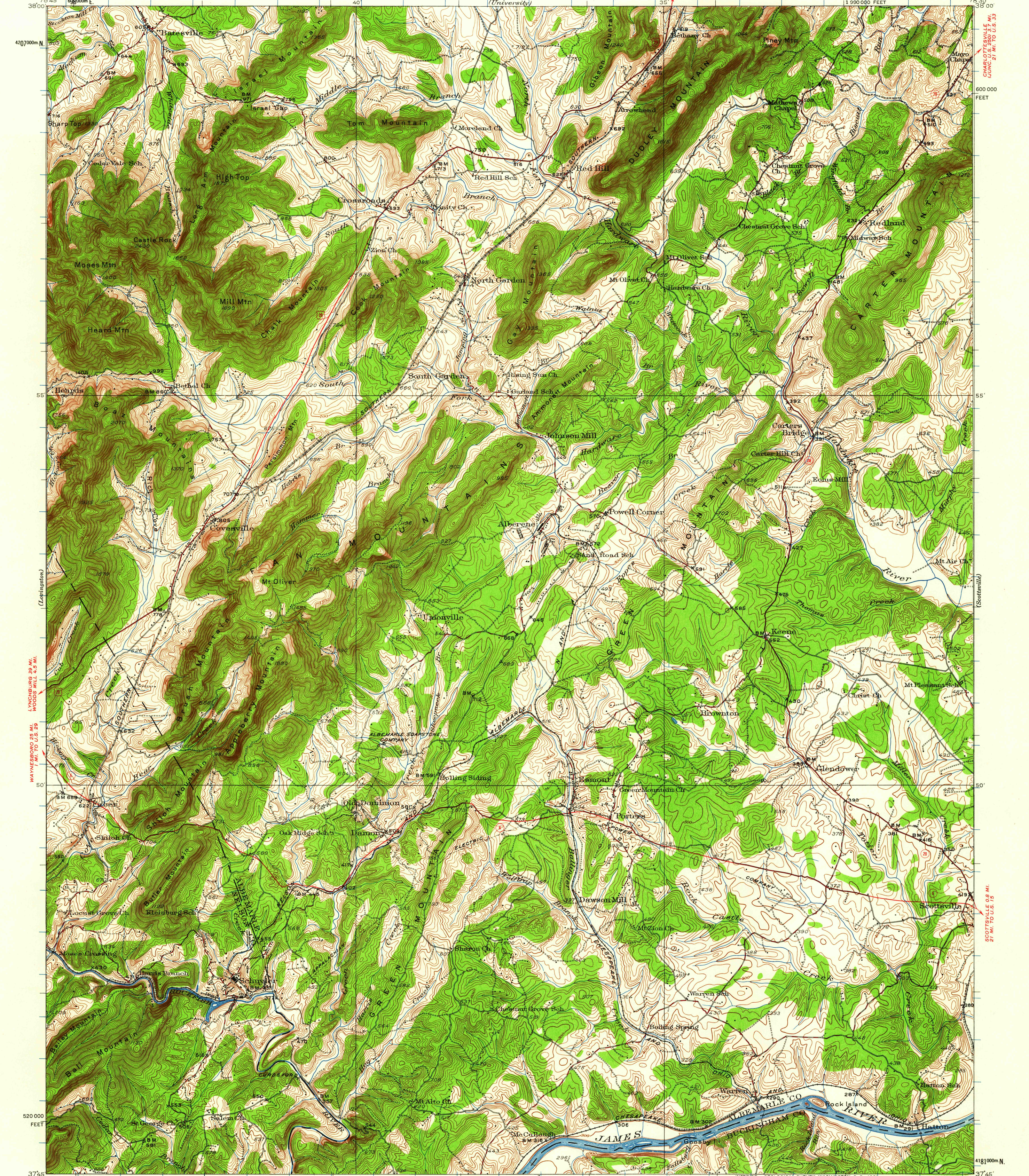


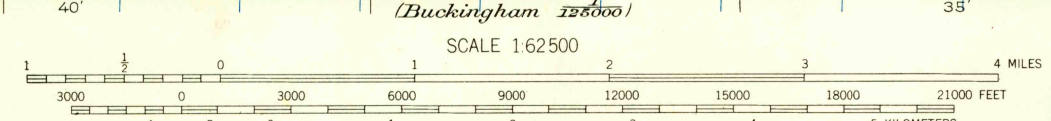
CULPEPER 32 MI.
CHARLOTTESVILLE 21 MI. TO U.S. 58 MI.

(Charlottesville)

(Waynesboro)



Topography by E.I. Ireland and G.E. Sisson
Surveyed in 1926 and 1935



ROAD CLASSIFICATION
Heavy-duty — Light-duty
Medium-duty — Unimproved dirt
U.S. Route — State Route

SCALE 1:62,500
CONTOUR INTERVAL 20 FEET
DATUM IS MEAN SEA LEVEL

USGS
Historical File
Topographic Division
U.S.G.S.
Polyconic projection. 1927 North American datum
10,000-foot grid based on Virginia (South)
rectangular coordinate system
1000-meter Universal Transverse Mercator grid ticks,
zone 17, shown in blue
COVESVILLE, VA.
N 3745-W 7830/15
1935

FOR SALE BY U.S. GEOLOGICAL SURVEY, WASHINGTON 25, D. C.
A FOLDER DESCRIBING TOPOGRAPHIC MAPS AND SYMBOLS IS AVAILABLE ON REQUEST

DEC 8 1967
3870