

ROCKY MOUNT

VIRGINIA-NORTH CAROLINA 1:62,500

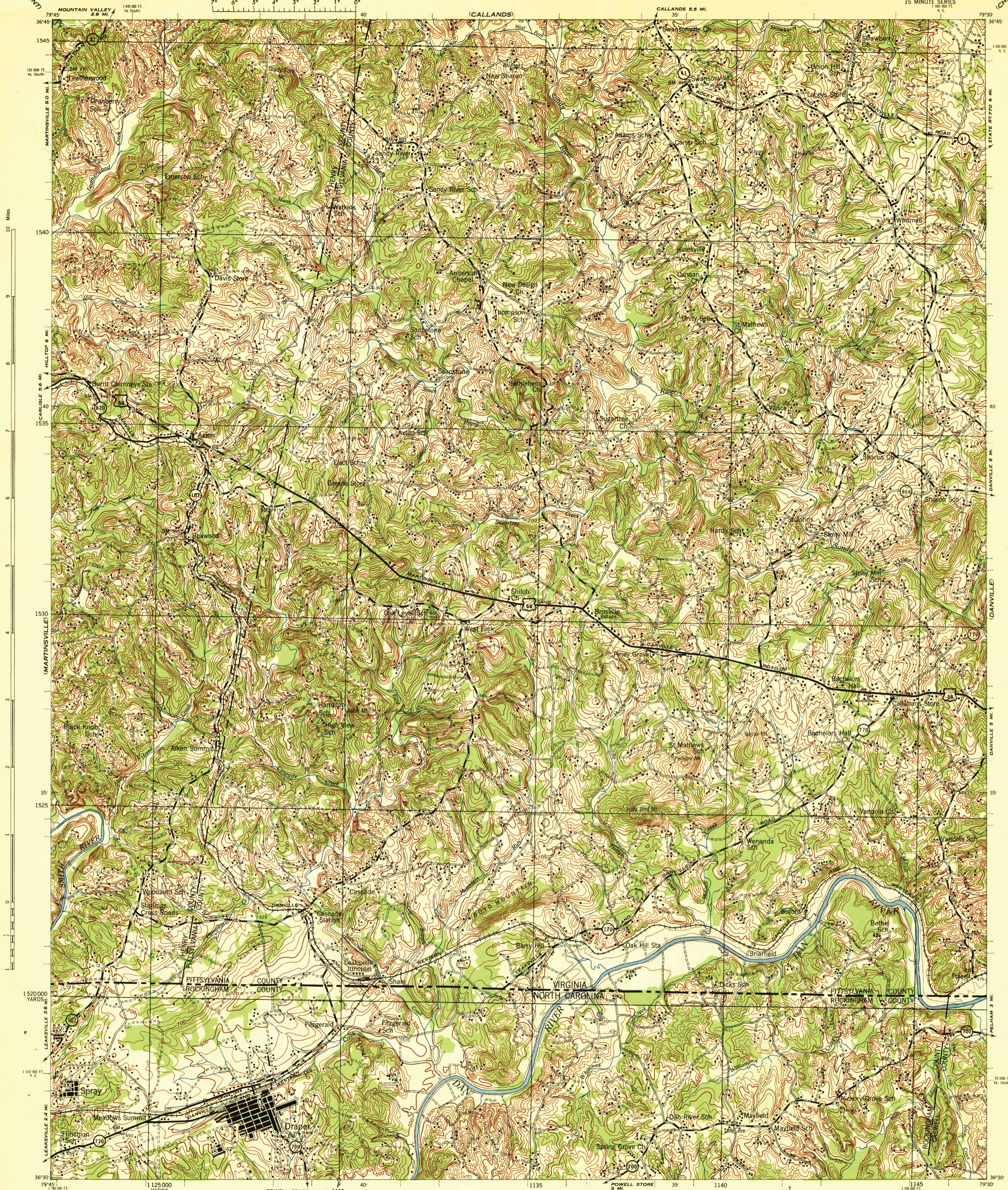
WAR DEPARTMENT
CORPS OF ENGINEERS, U. S. ARMY

FIRST EDITION-AMS 1

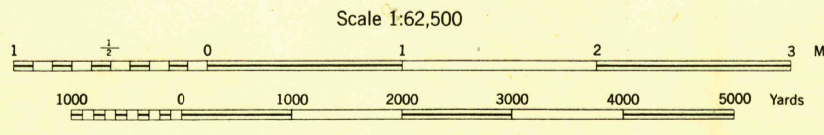
DRAPER QUADRANGLE

15 MINUTE SERIES

CHATHAM



First Edition (AMS 1), 1944.
 Prepared under the direction of the Chief of Engineers, U. S. Army, by the
 Army Map Service (OM), U. S. Army, Washington, D. C., 1944.
 Based on U. S. G. S. Quadrangle, Draper, 1:62,500 (1926).
 Control by U. S. Geological Survey.
 Surveyed in cooperation with the State of Virginia, 1924.
 Revised from single lens vertical aerial photographs.
 Aerial photography—A. A. A. Department of Agriculture, 1941.
 Polyconic Projection, North American Datum.



ROAD CLASSIFICATION 1943

Dependable hard surface, heavy duty road. Loose surface graded, dry weather road. U. S. Route. Secondary, hard surface, all weather road. Dirt road. State Road. More than two lanes indicated by note along road with tick at point of change.

FIVE THOUSAND YARD GRID COMPUTED FROM GRID SYSTEM FOR PROGRESSIVE MAPS IN THE U. S. - ZONE 8, U. S. G. S. SPECIAL PUBLICATION NO. 59

THE LAST THREE DIGITS OF THE GRID NUMBERS ARE OMITTED

THE STATE GRIDS ARE INDICATED FOR VIRGINIA, ZONE SOUTH BY TICKS NORTH CAROLINA BY TICKS OUTSIDE THE NEXT LINE AT 5000 FOOT INTERVALS

NOTE: OFFICERS USING THIS MAP WILL WANT BEWARE CORRECTIONS AND ADDITIONS WHICH COME TO THEIR ATTENTION AND MAIL DIRECT TO THE CHIEF OF ENGINEERS, WASHINGTON, D. C.

HISTORICAL FILES

(DO NOT REMOVE)

LEGEND

DRAPER, VA.-N. C.
 N3630-W7930/15

FILE COPY

RETURN TO CENTRAL FILE

RETURN TO:
 USGS MAP HISTORICAL MAP ARCHIVES

819-N-III-E