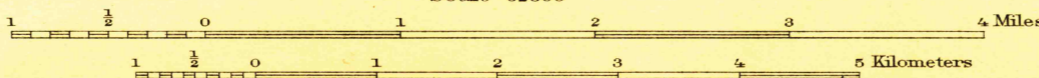




U.S.G.S.  
FILE COPY  
Ed. Div. Topographic Maps.

U.S.G.S.  
FILE COPY  
Ed. Div. Topographic Maps.

W. H. Harron, Acting Chief Geographer,  
Frank Sutton, Geographer in charge,  
Topography by J. I. Gayetty, J. A. Duck,  
S. T. Penick, and S. H. Birdseye.  
Control by U.S. Coast and Geodetic Survey,  
E. L. McNair, and E. E. Harris.  
Shoreline by U.S. Coast and Geodetic Survey,  
Surveyed in 1916-1917.



Scale 62500  
Contour interval on land 10 and 20 feet, changing on 20 foot contour.  
Contours off shore at depths of 5, 10, and 20 feet.  
Datum is mean sea level.

APPROXIMATE MEAN  
DECLINATION 1916.

Edition of 1917.

JUN 9 - 1917 4975

USGS  
Historical File  
Topographic Division

HEATHSVILLE

SURVEYED IN COOPERATION WITH THE WAR DEPARTMENT.