

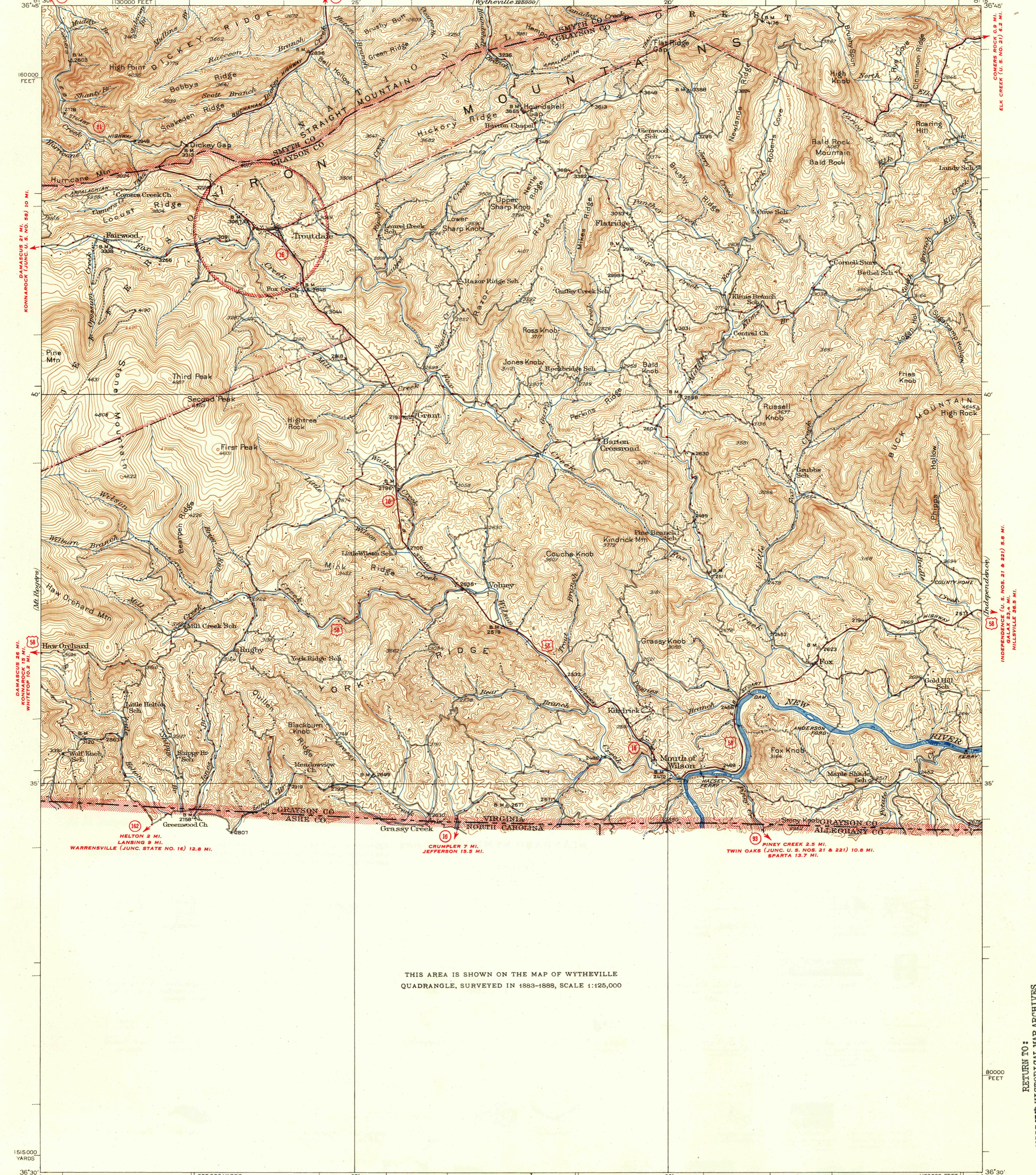
DAMASCUS (VIA STATE NOS. 81 AND 91) 28 MI.
HOLSTON MILL 7 MI. UNITED STATES
DEPARTMENT OF THE INTERIOR
GEOLOGICAL SURVEY

U.S.G.S.
FILE COPY
Inspection and Editing

MARION (U. S. NO. 11) 13 MI.
SUGAR GROVE 2 MI.

STATE OF VIRGINIA
REPRESENTED BY THE
CONSERVATION COMMISSION
GEOLOGICAL SURVEY
(Wytheville 1:50,000)

VIRGINIA-NORTH CAROLINA
MOUTH OF WILSON QUADRANGLE



THIS AREA IS SHOWN ON THE MAP OF WYTHEVILLE
QUADRANGLE, SURVEYED IN 1883-1888, SCALE 1:125,000

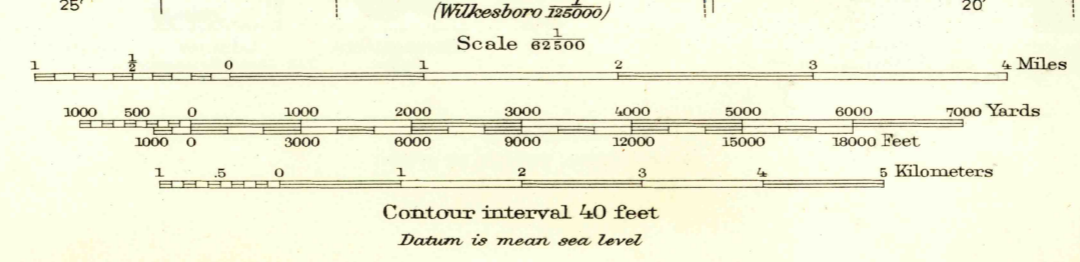
Topography by R.F. Hamke, R.E. Amidon, C.W. Buckley,
G.V. Little, and M.M. Sutherland
Surveyed in 1931 and 1935

ROAD CLASSIFICATION
1946
Dependable hard surface
heavy-duty road
Secondary hard-surface
all-weather road
More than two lanes indicated along road with tick at point of change

1946
Dry weather roads
Loose-surface graded
Unsurfaced, graded
Dirt road

U.S. Route 15
State Route 8

APPROXIMATE MEAN
DECLINATION, 1935



Polyconic projection, 1927 North American datum
5000 yard grid based on U. S. zone system, B
10000 foot grid based on Virginia (South)
rectangular coordinate system

MOUTH OF WILSON, VA-N.C.
Edition of 1940
reprinted 1947
N3630-W8115/15

USGS S.
Historical COPY
Topographic Division
Inspection and Editing

APR 11 1947

RETURN TO:
USGS AND HISTORICAL MAP ARCHIVES

2125