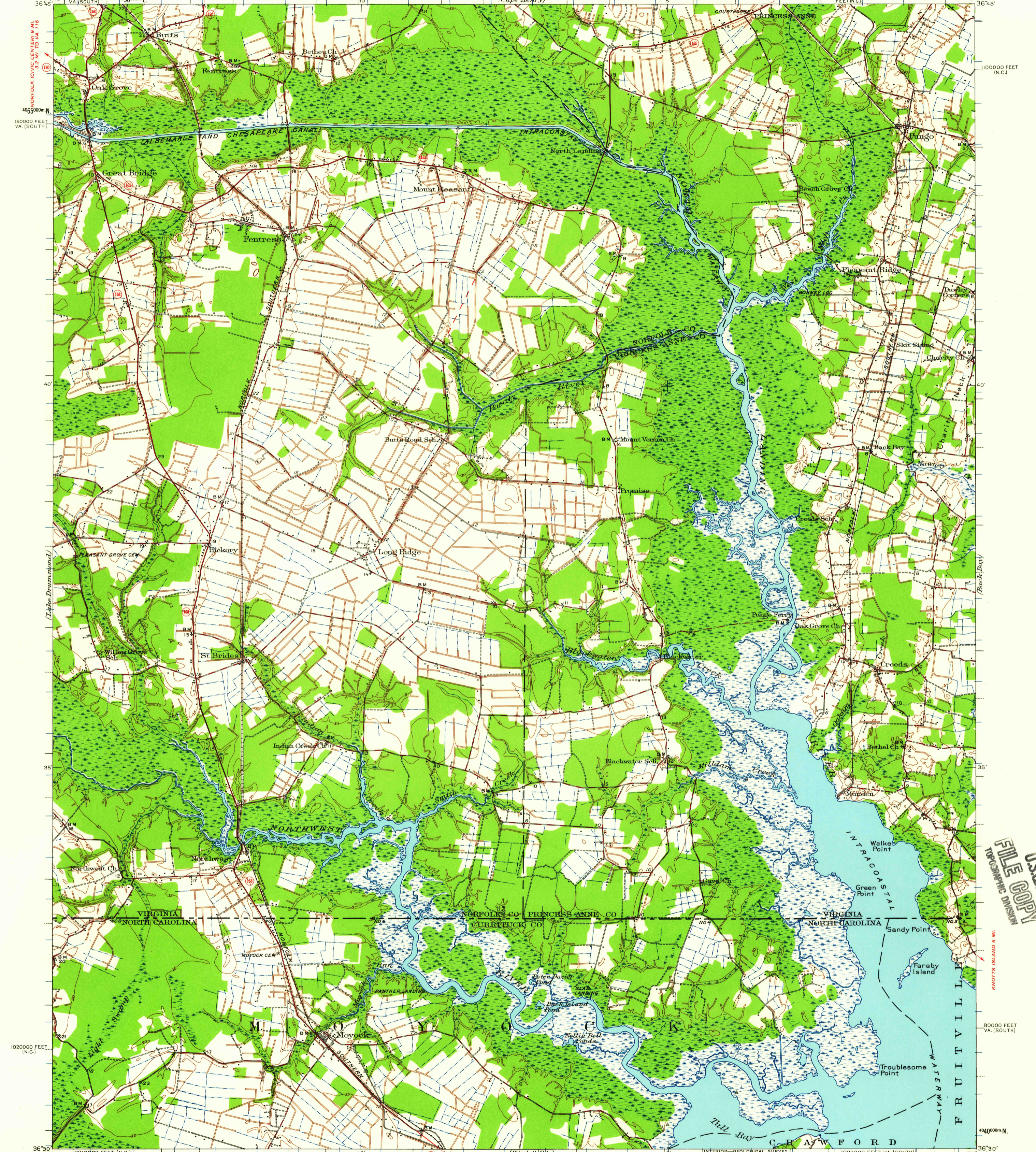


NORFOLK (CIVIC CENTER) 8 MI.  
3.3 MI. TO U.S. 13  
7.6 MI. TO U.S. 58  
KEMPSVILLE (JUNC. VA. 165) 6.1 MI.

UNITED STATES  
DEPARTMENT OF THE INTERIOR  
GEOLOGICAL SURVEY

VIRGINIA-NORTH CAROLINA  
MOYOCK QUADRANGLE  
15-MINUTE SERIES



Map by the Geological Survey  
1938-1939



USGS  
Historical File  
Topographic Division

2730000 FEET VA. (SOUTH)  
4000m E  
Polyconic projection. 1927 North American datum  
10,000-foot grids based on Virginia (South) and  
North Carolina rectangular coordinate systems  
1000-meter Universal Transverse Mercator grid ticks,  
zone 18, shown in blue

MOYOCK, VA. - N. C.  
N3630-W7600/15

1939

FOR SALE BY U. S. GEOLOGICAL SURVEY, WASHINGTON 25, D. C.  
A FOLDER DESCRIBING TOPOGRAPHIC MAPS AND SYMBOLS IS AVAILABLE ON REQUEST

U.S.G.S.  
FILE COPY  
TOPOGRAPHIC DIVISION

Nov 17 1959

2537