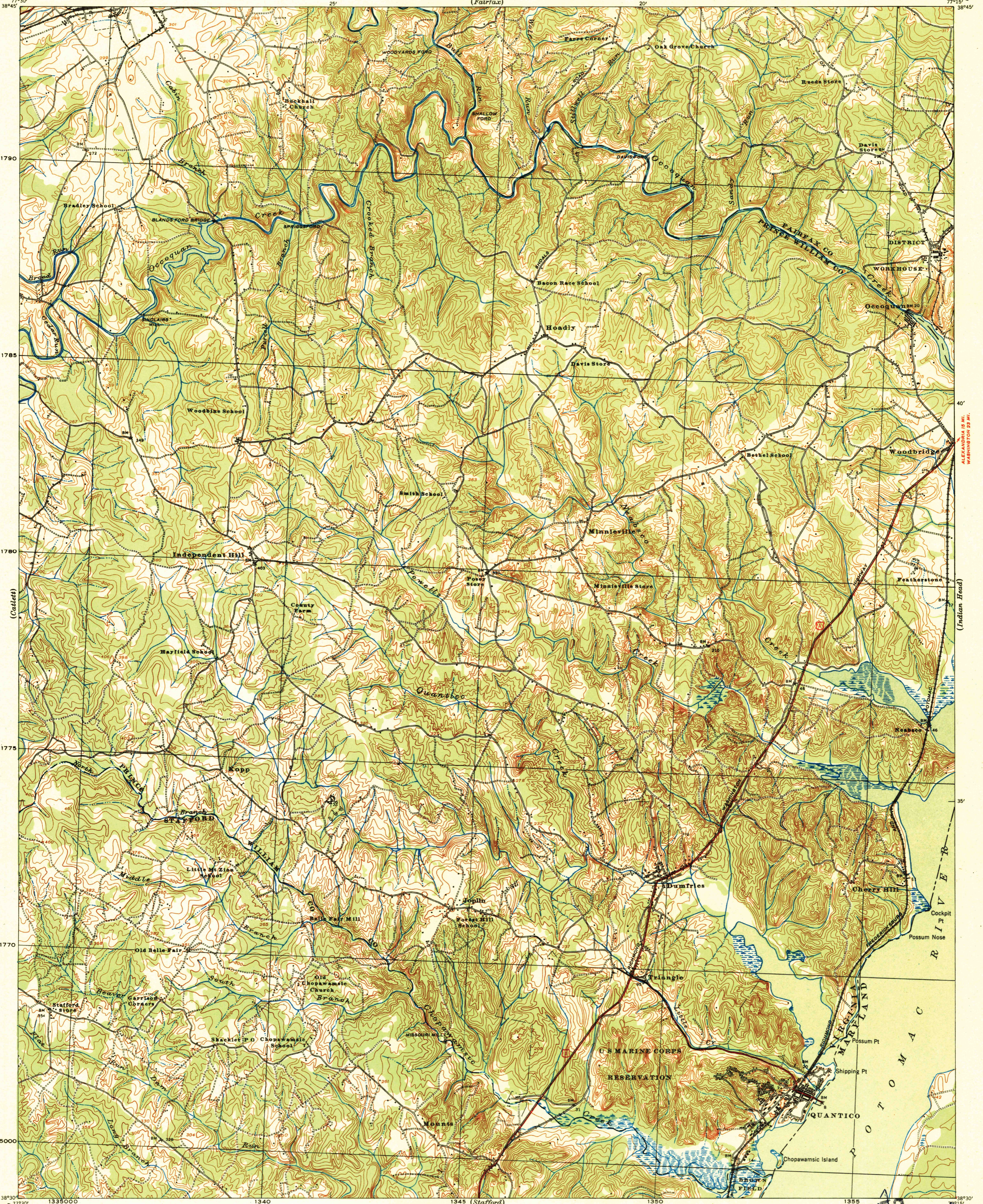
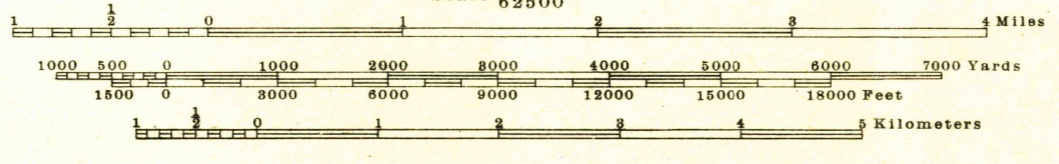


(Washington & Vicinity)
1:51,680



Prepared under the direction of the Chief of Engineers, U. S. Army, 1925.
Control by U. S. Coast and Geodetic Survey, U. S. Geological Survey and
29th Engineers, U. S. Army.
Topography by 29th Engineers.
Horizontal third order control obtained by searchlight triangulation and
transit traverse.
Field sheets prepared from T-2 aerial photographs.
Aerial photographs furnished by Air Corps, U. S. Army.
Surveyed 1925.
Partial revision from aerial photographs 1939.
Polyconic Projection, North American Datum.



Contour interval 20 feet
Datum is mean sea level

FIVE THOUSAND YARD GRID COMPUTED FROM "GRID SYSTEM FOR PROGRESSIVE MAPS
IN THE U. S." "ZONE B, U. S. C. & G. S. SPECIAL PUBLICATION NO. 59
(THE LAST THREE DIGITS OF THE GRID NUMBERS ARE OMITTED)

NOTE: OFFICERS USING THIS MAP WILL MARK HEREON CORRECTIONS AND ADDITIONS WHICH COME
TO THEIR ATTENTION AND MAIL DIRECT TO "THE CHIEF OF ENGINEERS, WASHINGTON, D. C."

HISTORICAL FILES
DO NOT REMOVE
US ROUTE 1927
STATE ROUTE

APPROXIMATE MEAN
DECLINATION 1939
NO ANNUAL MAGNETIC CHANGE

FILE COPY
NOT TO BE REMOVED FROM FILES

QUANTICO
N3830-W7715/15

HISTORICAL FILES
(DO NOT REMOVE)