

CHRISTIANBURG
1:125,000

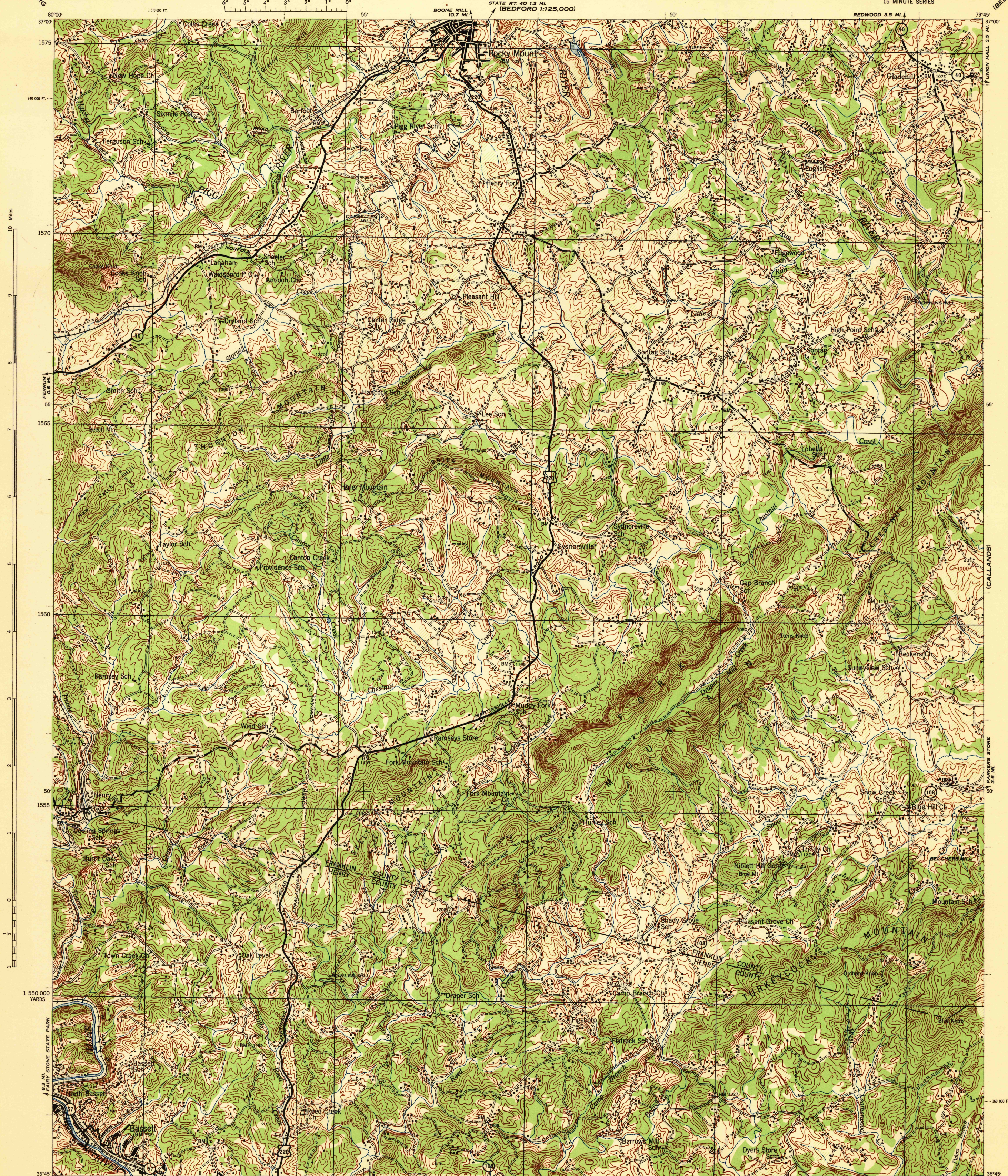
VIRGINIA 1:62,500

WAR DEPARTMENT
CORPS OF ENGINEERS, U. S. ARMY

FIRST EDITION-AMS 1

ROCKY MOUNT QUADRANGLE
15 MINUTE SERIES

BEDFORD 1:125,000



10 Miles
8
7
6
5
4
3
2
1
0
1 550 000 YARDS

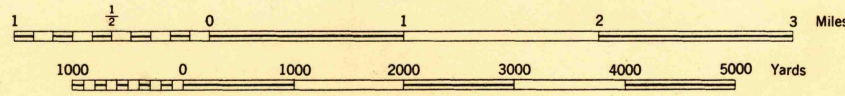
(CALLANDS)
STY PARKERS STORE
2.6 MI.

First Edition (AMS 1), 1944.

Prepared under the direction of the Chief of Engineers, U. S. Army, by the Army Map Service (QU), U. S. Army, Washington, D. C., 1944.
Based on U. S. G. S. Quadrangle, Rocky Mount, 1:62,500 (1927).
Control by U. S. Geological Survey.
Surveyed in cooperation with the State of Virginia, 1925.
Revised from single lens vertical aerial photographs.
Aerial photography: A.A.A., Department of Agriculture, 1941.
Polyconic Projection, North American Datum.

ROAD CLASSIFICATION 1943

Double hard surface, heavy duty road.	Lighter surface graded, by weather road.	U. S. Route
Secondary hard surface, all weather road.	Dirt road.	State Route
More than two lanes indicated by note along road with tick at point of change.		3 LANE 4 LANE



CONTOUR INTERVAL 40 FEET
DATUM IS MEAN SEA LEVEL

FIVE THOUSAND YARD GRID COMPUTED FROM GRID SYSTEM FOR PROGRESSIVE MAPS IN THE U. S. - ZONE B, U. S. C. & G. S. SPECIAL PUBLICATION NO. 59

THE LAST THREE DIGITS OF THE GRID NUMBERS ARE OMITTED
VIRGINIA STATE GRID ZONE SOUTH IS INDICATED BY DOTTED TICKS OUTSIDE THE HEAT LINE AT 10,000 FOOT INTERVALS
NOTE: DISTANCES ON THIS MAP WILL VARY FROM DISTANCES MEASURED ON THE GROUND BECAUSE OF THE CURVATURE OF THE EARTH AND THE METHOD OF MEASUREMENT.

HISTORICAL FILES
SUPERSEDED
LEGEND
BRUSH

FILE COPY
RETURN TO:
USGS AND HISTORICAL MAP ARCHIVES

ROCKY MOUNT, VA.
N3645-W7945/15
FILE COPY
Not to be Removed From Files

RETURN TO:
USGS AND HISTORICAL MAP ARCHIVES