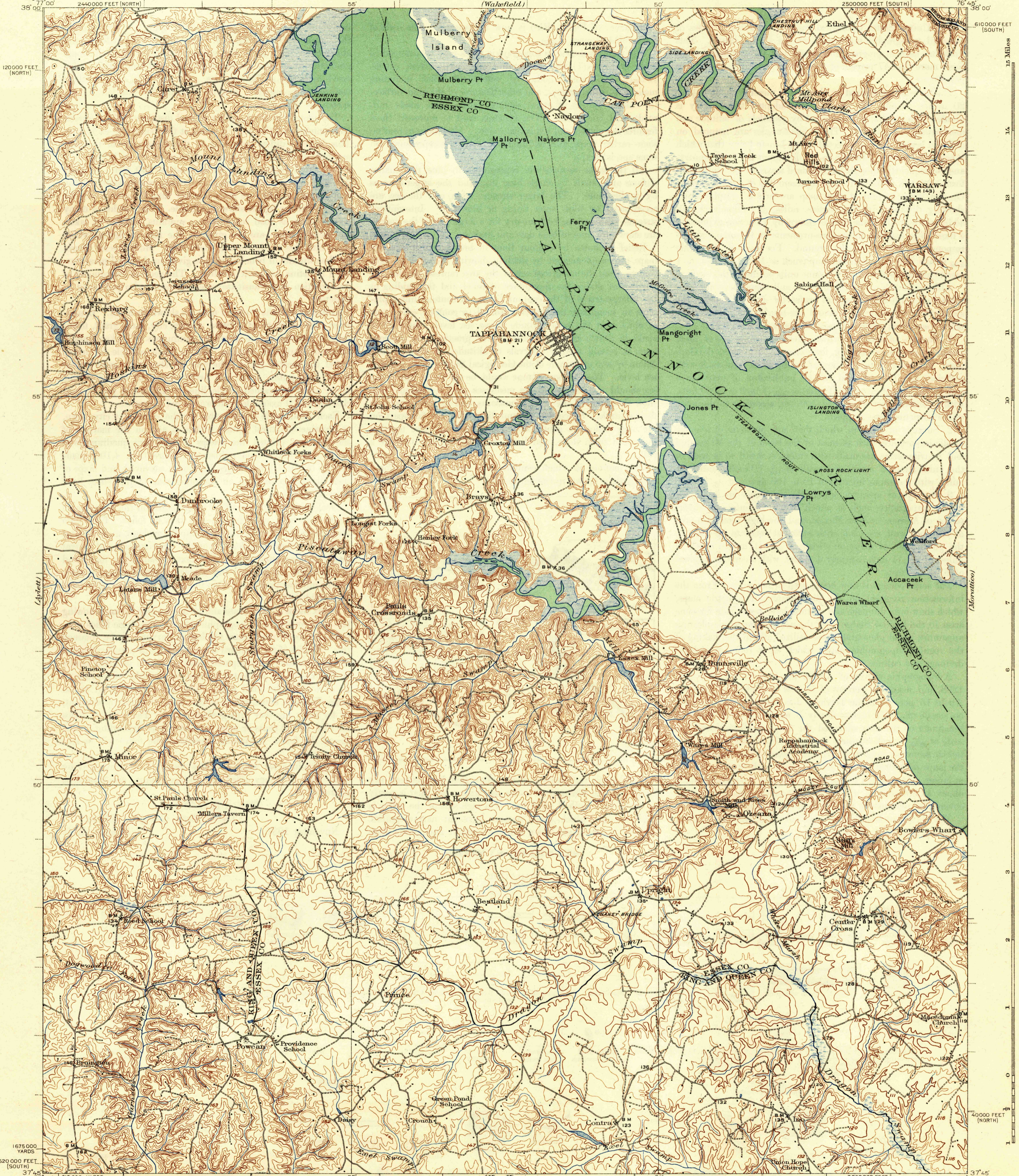
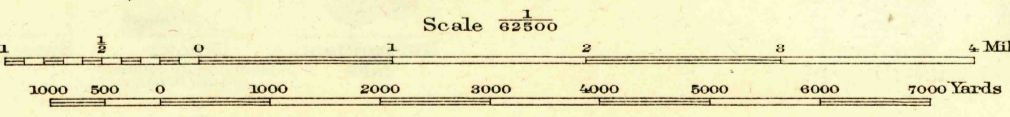


U. S. G. S.  
FILE COPY  
Inspection and Editing



R. B. Marshall, Chief Geographer  
Frank Sutton, Geographer in charge  
Glenn S. Smith, Topographic Engineer in charge  
Topography by J. I. Gayetty, F. W. Hughes, J. H. Wilke, and C. H. Gavey  
Control by U. S. Coast and Geodetic Survey, E. L. McNair, DeWitt McLaughlin, E. E. Harris, and Stanley Druhrot  
Surveyed in 1917



Contour intervals 10 and 20 feet changing on the 20 foot contour.  
Datum is mean sea level

Polyconic projection, North American datum  
5000 yard grid based on U.S. zone system, A  
Shore line is the margin of water at mean high tide,  
2 feet above mean low water at Tappahannock  
10000 foot grids based on Virginia (North) and  
Virginia (South) rectangular coordinate systems

USGS  
Historical File  
Topographic Division

TAPPAHANNOCK, VA.  
Edition of 1938  
(First published in 1918)

U. S. G. S.  
FILE COPY

MAR 23 1938