

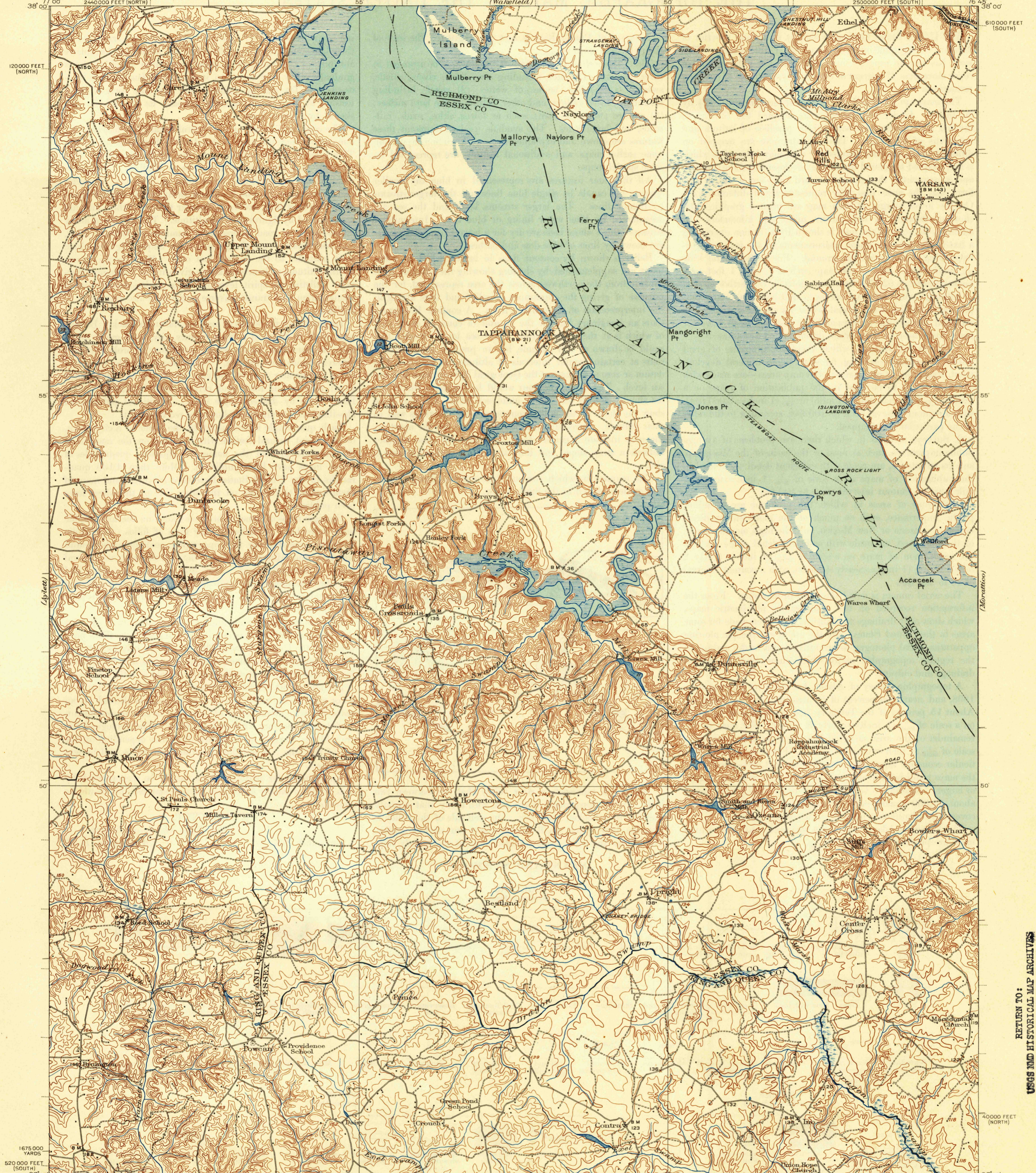
U. S. G. S.
FILE COPY
Insertion and Editing.

UNITED STATES
DEPARTMENT OF THE INTERIOR
GEOLOGICAL SURVEY

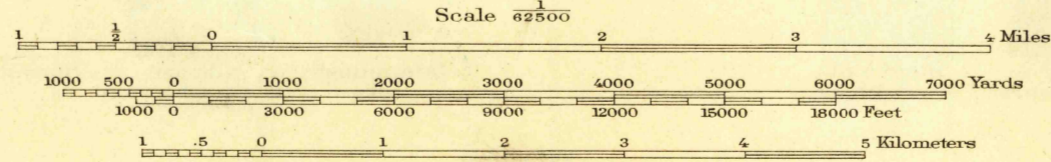
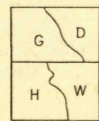
WAR DEPARTMENT
CORPS OF ENGINEERS, U. S. ARMY

STATE OF VIRGINIA
REPRESENTED BY THE
CONSERVATION COMMISSION
GEOLOGICAL SURVEY

VIRGINIA
TAPPAHANNOCK QUADRANGLE



1675 000 YARDS
520 000 FEET (SOUTH)
177 45
1615 000 YARDS
2440 000 FEET (SOUTH)
R. B. Marshall, Chief Geographer
Frank Sutton, Geographer in charge
Glenn S. Smith, Topographic Engineer
In charge Military Surveys
Topography by J. J. Gayetty, F. W. Hughes, J. H. Wilke, and
C. H. Davey
Control by U. S. Coast and Geodetic Survey, E. L. McNair,
DeWitt McLaughlin, E. E. Harris, and Stanley Druhot
Surveyed in 1917



Contour intervals 10 and 20 feet changing on the 20 foot contour
Datum is mean sea level

APPROXIMATE MEAN
DECLINATION, 1917

Polyconic projection, North American datum
5000 yard grid based on U. S. zone system, A
Shore line is the margin of water at mean high tide,
2 feet above mean low water at Tappahannock
10000 foot grids based on Virginia (North) and
Virginia (South) rectangular coordinate systems
TAPPAHANNOCK, VA.
Edition of 1938
(First published in 1918)
reprinted 1944
N 3745-W 7645/5

SURVEYED IN COOPERATION WITH THE WAR DEPARTMENT
AND THE STATE OF VIRGINIA

USGS
Historical File
Topographic Division

U. S. G. S.
FILE COPY
Insertion and Editing.

JAN 17 1945

RETURN TO:
USGS AND HISTORICAL MAP ARCHIVES

4220