

PARIS 1.0 MI. U.S. 501 23 MI.
BETHEL 1.2 MI.

(Marshall 1:31 680)

(Thoroughfare Gap)
1:31 680

(Culpeper 1:31 680)

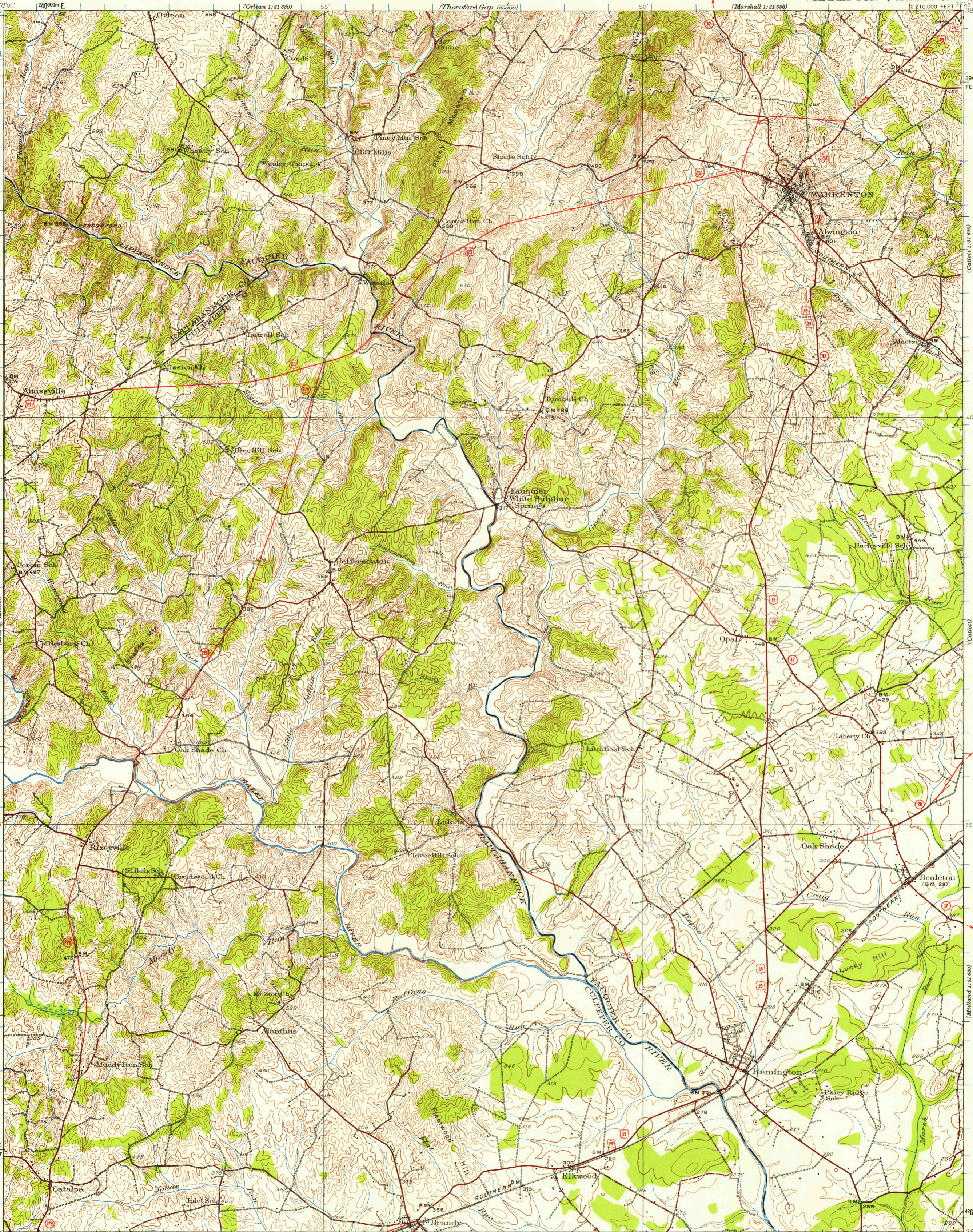
(Culpeper)

(Molando 1:31 680)

(Middleburg 1:31 680)

(Richmond)

(Richmond)



Topography by J.M. Rawls, R.H. Runyan, G.E. Sisson, and H.R. Kilmer
Culture and drainage in part compiled from aerial photographs
taken by Air Corps, U.S. Army
Surveyed in 1927

SCALE 1:62 500
CONTOUR INTERVAL 20 FEET
DATUM IS MEAN SEA LEVEL

INTERIOR—GEOLOGICAL SURVEY
WASHINGTON, D. C.—1958

Polyconic projection. 1927 North American datum
10,000-foot grid based on Virginia (North)
rectangular coordinate system
1000-meter Universal Transverse Mercator grid ticks,
zone 18, shown in blue

ROAD CLASSIFICATION
Heavy-duty — Light-duty —
Medium-duty — Unimproved dirt —
U. S. Route — State Route

APPROXIMATE MEAN DECLINATION, 1927

WARRENTON, VA.
N 8330—W 7745/15
1927

FOR SALE BY U. S. GEOLOGICAL SURVEY, WASHINGTON 25, D. C.
A FOLDER DESCRIBING TOPOGRAPHIC MAPS AND SYMBOLS IS AVAILABLE ON REQUEST

USGS
Historical File
Topographic Division

U.S.G.S.
FILE COPY
TOPOGRAPHIC DIVISION

MAR - 6 1958

1435