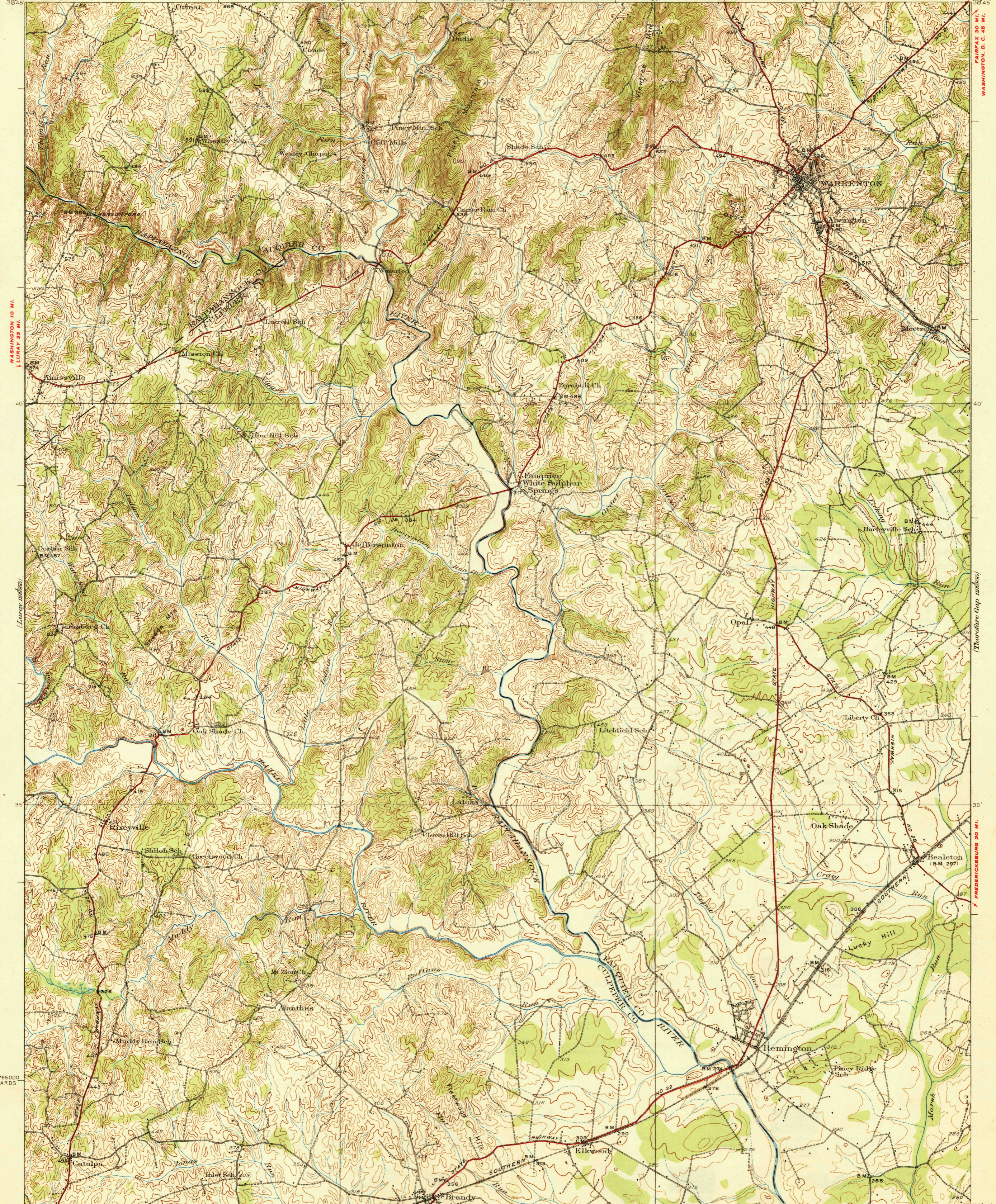


STATE OF VIRGINIA
CONSERVATION AND DEVELOPMENT COMMISSION
VIRGINIA GEOLOGICAL SURVEY
ARTHUR C. BEVAN, STATE GEOLOGIST
(Thorofare Gap 125000)

U. S. G. S.
FILE COPY
Invention and Editing.

VIRGINIA
WARRENTON QUADRANGLE

DEPARTMENT OF THE INTERIOR
U. S. GEOLOGICAL SURVEY



WASHINGTON 10 MI.
LURAY 35 MI.
1765000 YARDS

WINCHESTER 50 MI.
THE PLAINS 9 MI.
FAIRFAX 50 MI.
WASHINGTON, D. C. 48 MI.
15 Miles
FREDERICKSBURG 30 MI.

78°00' 77°30' 38°30' 39°00' (Spotsylvania 125000)
CULPEPER 7 MI. (Spotsylvania 125000)
CHARLOTTESVILLE 60 MI. (Spotsylvania 125000)
Scale 62500
1290000 YARDS
Topography by J.M. Rawls, R.H. Runyan, G.E. Sisson, and H.R. Kilmer
Culture and drainage in part compiled from aerial photographs
taken by Air Corps, U.S. Army
Control by U.S. Geological Survey and
U.S. Coast and Geodetic Survey
Surveyed in 1927
Polyconic projection, North American datum
5000 yard grid based upon U.S. zone system, B
HARD IMPERVIOUSLY SURFACED ROADS
OTHER MAIN TRAVELED ROADS
1930
WARRENTON, VA.
Edition of 1930
2654 : 4200 ; /49;
OCT 21 1930 (2485)
U. S. G. S.
FILE COPY
Invention and Editing.
Contour interval 20 feet
Datum is mean sea level