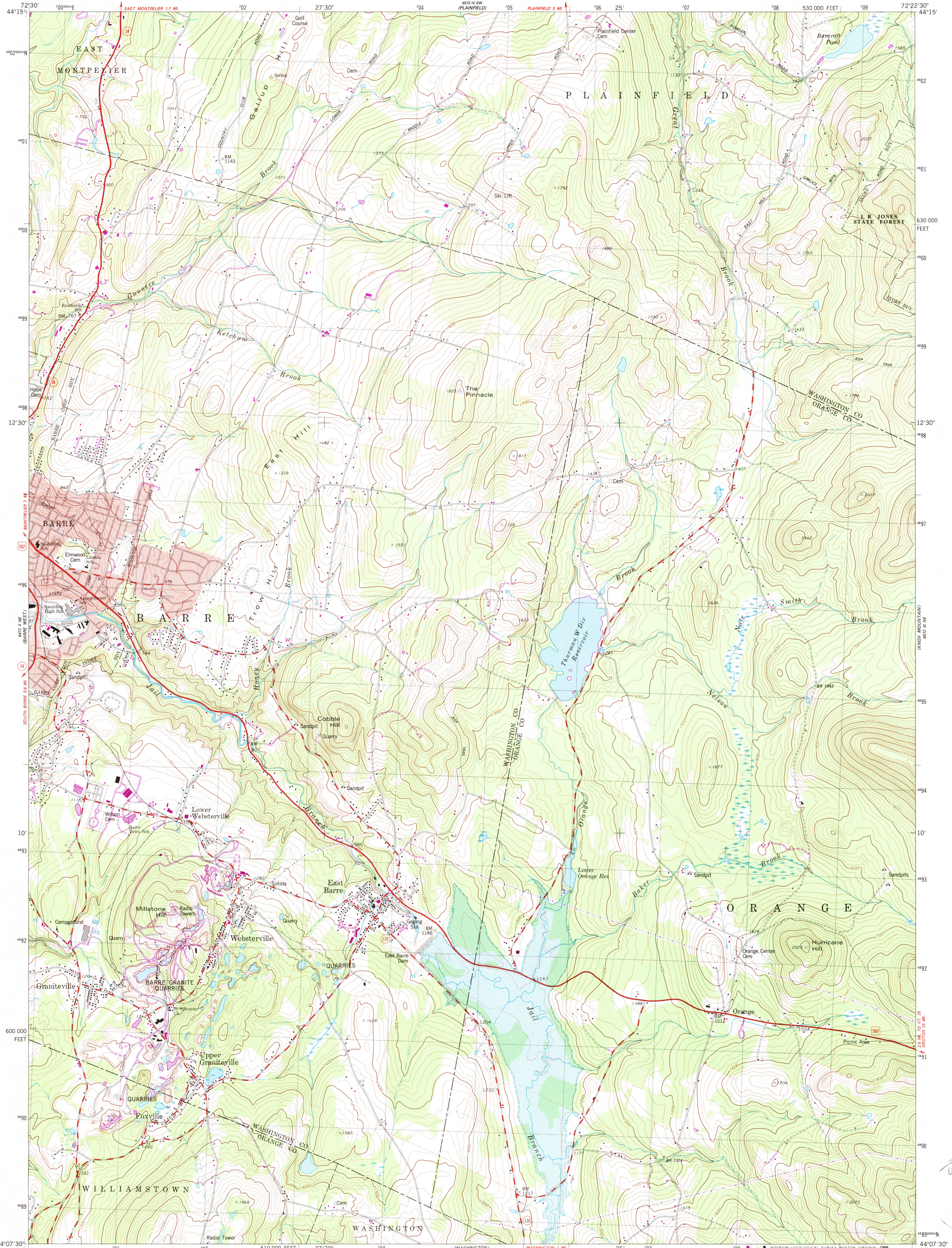
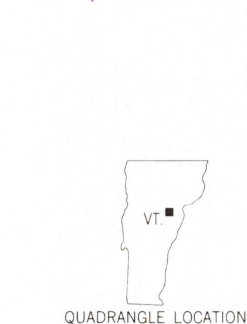
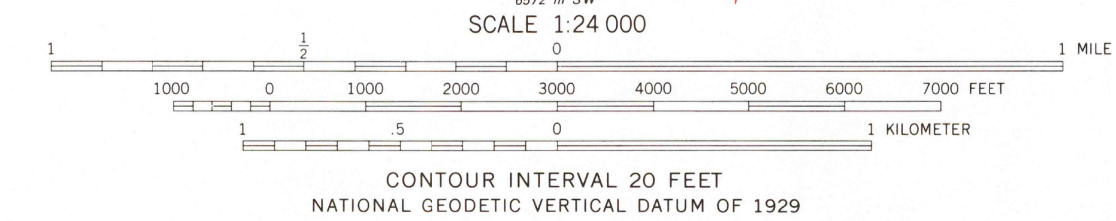
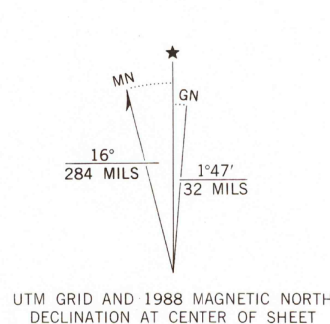


UNITED STATES
DEPARTMENT OF THE INTERIOR
GEOLOGICAL SURVEY

BARRE EAST QUADRANGLE
VERMONT
7.5 MINUTE SERIES (TOPOGRAPHIC)
NW/4 EAST BARRE 15' QUADRANGLE



Mapped, edited, and published by the Geological Survey
Control by USGS and NOS/NOAA
Topography by photogrammetric methods from aerial photographs taken 1976. Field checked 1976. Map edited 1981
Projection and 10,000-foot grid ticks: Vermont coordinate system (transverse Mercator)
1000-meter Universal Transverse Mercator grid, zone 18
1927 North American Datum
To place on the predicted North American Datum 1983 move the projection lines 2 meters south and 37 meters west as shown by dashed corner ticks
Area covered by dashed light-blue pattern is subject to controlled inundation
Fine red dashed lines indicate selected fence and field lines where generally visible on aerial photographs. This information is unchecked
There may be private inholdings within the boundaries of the National or State reservations shown on this map
Red tint indicates area in which only landmark buildings are shown



ROAD CLASSIFICATION
Primary highway, hard surface
Secondary highway, hard surface
Light duty road, hard or improved surface
Unimproved road
Interstate Route
U. S. Route
State Route

BARRE EAST, VT.
NW/4 EAST BARRE 15' QUADRANGLE
44072-B4-TF-024

1981
PHOTOREVISED 1988
DMA 6572 III NW - SERIES V813

THIS MAP COMPLIES WITH NATIONAL MAP ACCURACY STANDARDS
FOR SALE BY U. S. GEOLOGICAL SURVEY
DENVER, COLORADO 80225 OR RESTON, VIRGINIA 22092
A FOLDER DESCRIBING TOPOGRAPHIC MAPS AND SYMBOLS IS AVAILABLE ON REQUEST

Revisions shown in purple and woodland compiled from aerial photographs taken 1983 and other sources
This information not field checked. Map edited 1988

USGS NMD HISTORICAL MAP

JUL 3 1 1989

REC'D FILE COPY