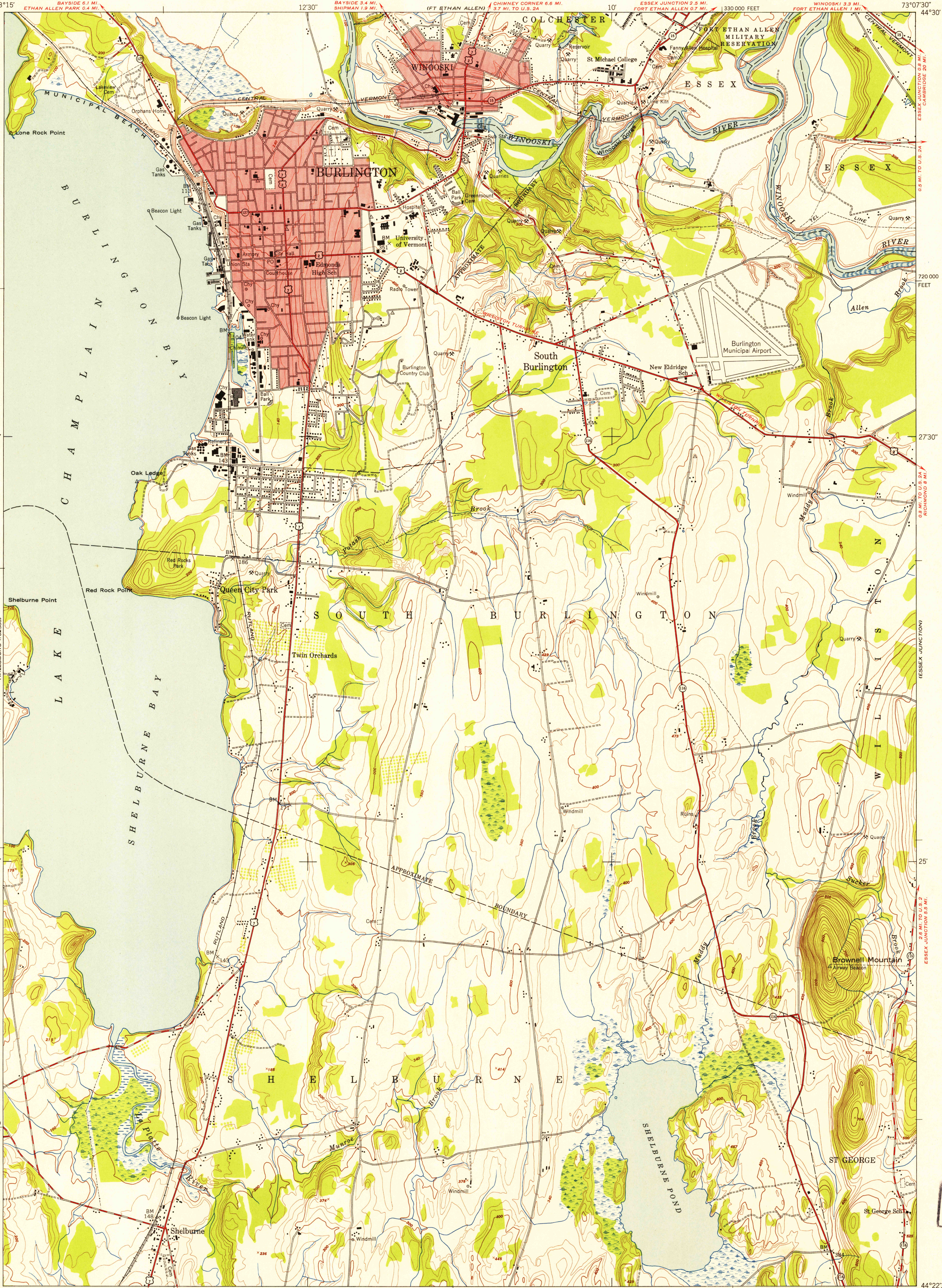


U.S.G.S.
FILE COPY
Inspection and Editing

U.S.G.S.
FILE COPY
Inspection and Editing

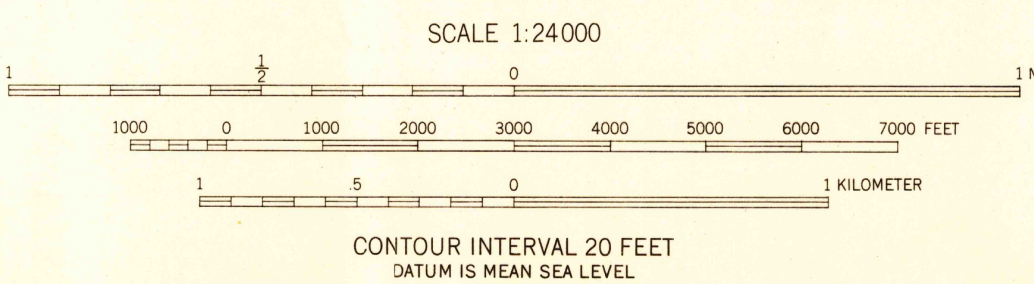
HISTORICAL

DEC 10 1953



Mapped by the Army Map Service
Published for civil use by the Geological Survey
Control by USGS, USC&GS, and USCE
Topography from aerial photographs by multiplex methods
Aerial photographs taken 1947. Field check 1948
Polyconic projection. 1927 North American datum
10,000-foot grid based on Vermont coordinate system
Red tint indicates area in which only
landmark buildings are shown
No distinction is made between barns, dwellings,
commercial and industrial buildings
Unchecked elevations are shown in brown

APPROXIMATE MEAN
DECLINATION, 1948



USGS
Historical File
Topographic Division

ROAD CLASSIFICATION
Heavy-duty 2 LANE 16 LANE Light-duty
Medium-duty 2 LANE 16 LANE Unimproved dirt
U. S. Route State Route

BURLINGTON, VT.
NW/4 BURLINGTON 15' QUADRANGLE
N4422.5-W7307.5/7.5

1948

THIS MAP COMPLIES WITH NATIONAL MAP ACCURACY STANDARDS
FOR SALE BY U. S. GEOLOGICAL SURVEY, WASHINGTON 25, D. C.
A FOLDER DESCRIBING TOPOGRAPHIC MAPS AND SYMBOLS IS AVAILABLE ON REQUEST

3220