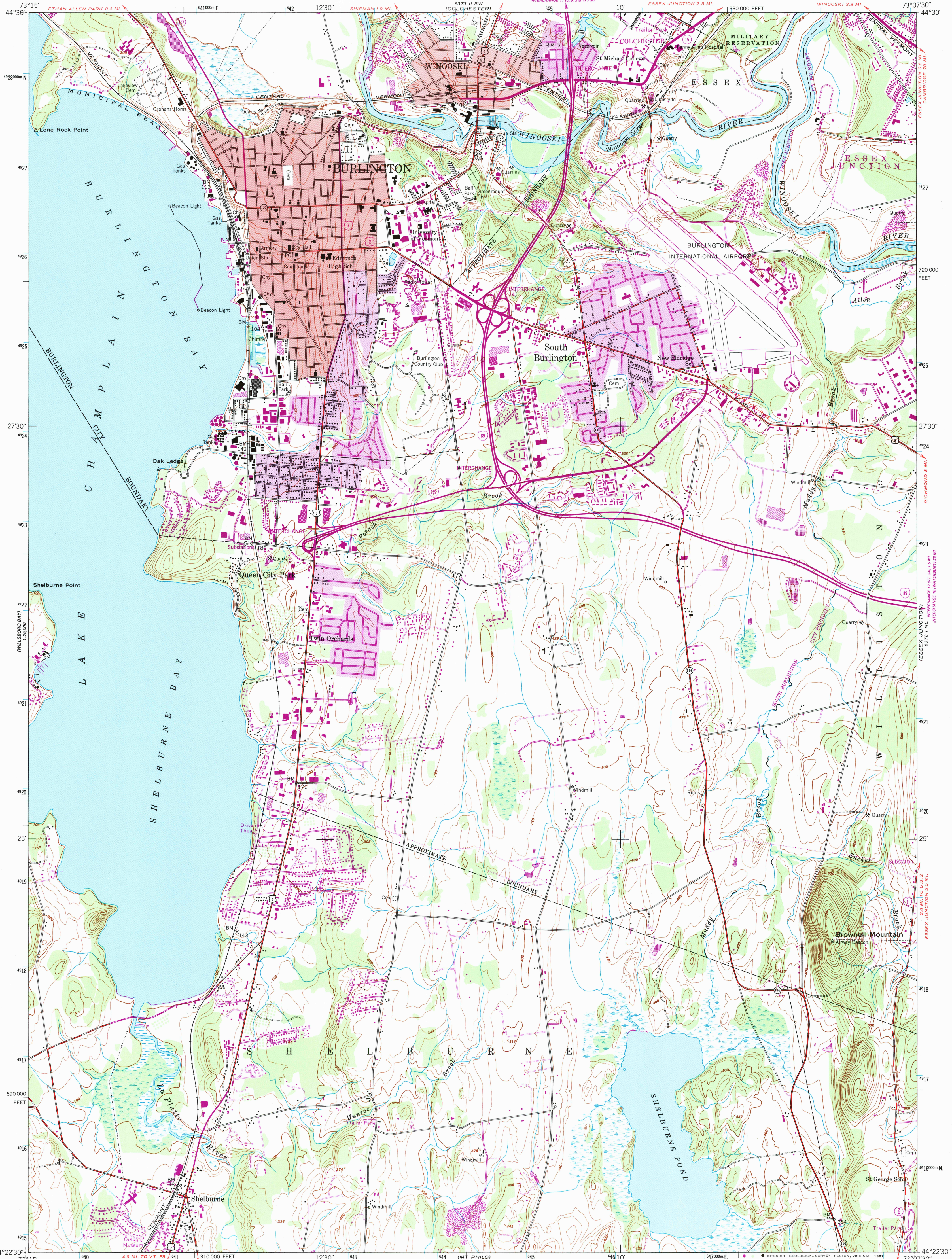


UNITED STATES
DEPARTMENT OF THE INTERIOR
GEOLOGICAL SURVEY

UNITED STATES
DEPARTMENT OF THE ARMY
CORPS OF ENGINEERS

BURLINGTON QUADRANGLE
VERMONT-CHITTENDEN CO.
7.5 MINUTE SERIES (TOPOGRAPHIC)
NW 1/4 BURLINGTON 15' QUADRANGLE



Mapped by the Army Map Service
Published for civil use by the Geological Survey

Control by USGS, USC&GS, and USCE

Topography from aerial photographs by multiplex methods

Aerial photographs taken 1947. Field check 1948

Polyconic projection. 1927 North American datum

10,000-foot grid based on Vermont coordinate system

1000-meter Universal Transverse Mercator grid ticks,

zone 18, shown in blue

To place on the predicted North American Datum 1983

move the projection lines 2 meters south and

34 meters west as shown by dashed corner ticks

Red tint indicates area in which only landmark

buildings are shown

No distinction is made between barns, dwellings,

commercial, and industrial buildings

There may be private inholdings within the boundaries

of the National or State reservations shown on this map

SCALE 1:24,000

CONTOUR INTERVAL 20 FEET
NATIONAL GEODETIC VERTICAL DATUM OF 1929

THIS MAP COMPLIES WITH NATIONAL MAP ACCURACY STANDARDS
FOR SALE BY U. S. GEOLOGICAL SURVEY

DENVER, COLORADO 80225 OR RESTON, VIRGINIA 22092

A FOLDER DESCRIBING TOPOGRAPHIC MAPS AND SYMBOLS IS AVAILABLE ON REQUEST

ROAD CLASSIFICATION

Heavy-duty 4 LANE 16 LANE Light-duty

Medium-duty 4 LANE 16 LANE Unimproved dirt

Interstate Route U. S. Route State Route

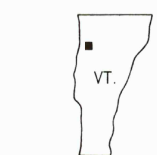
BURLINGTON, VT.
NW 1/4 BURLINGTON 15' QUADRANGLE

44073-D2-TF-024

1948
PHOTOREVISED 1987
DMA 6372 I NW-SERIES V813

Revisions shown in purple and woodland compiled by
the Geological Survey from aerial photographs
taken 1983 and other sources. This information not field checked
Map edited 1987

Purple tint indicates extension of urban areas



QUADRANGLE LOCATION

JUN 10 1988

USGS NATIONAL MAP

REC'D FILE COPY