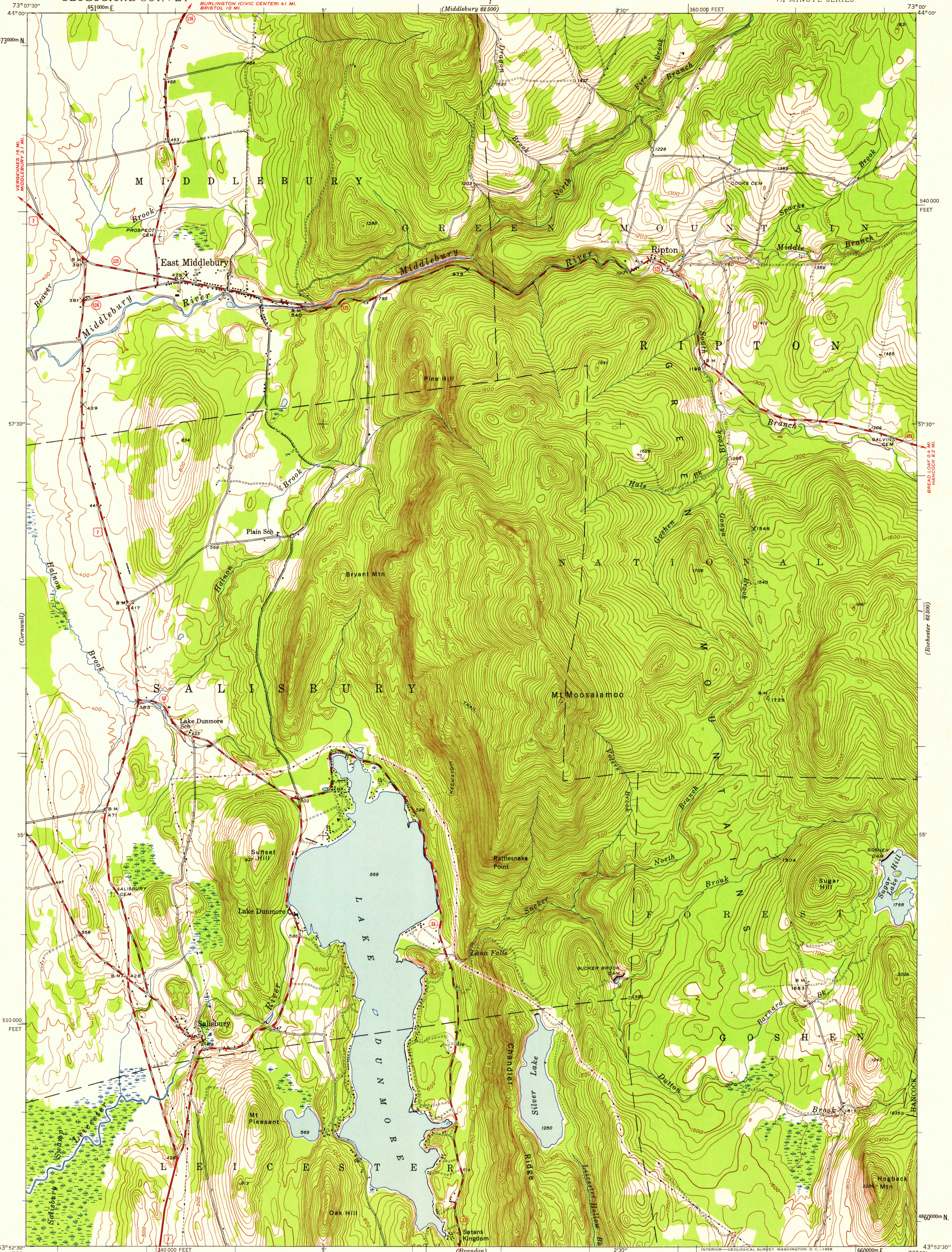


(Middlebury) 25290

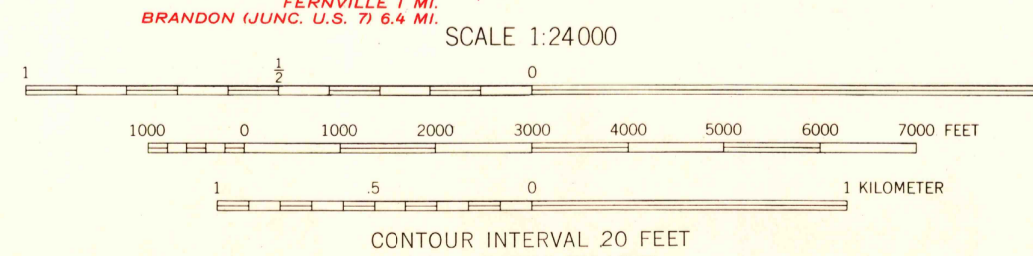
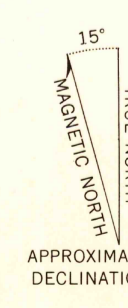
(Lincoln Mt.) 25290



Mapped by the Geological Survey  
1944

ROAD CLASSIFICATION

Heavy-duty	Light-duty
Medium-duty	Unimproved dirt
U. S. Route	State Route



CONTOUR INTERVAL 20 FEET  
DATUM IS MEAN SEA LEVEL

USGS  
Historical File  
Topographic Division

Polyconic projection. 1927 North American datum  
10,000-foot grid based on Vermont rectangular  
coordinate system  
1000-meter Universal Transverse Mercator grid ticks,  
zone 18, shown in blue  
Location of forest boundary  
furnished by U. S. Forest Service

EAST MIDDLEBURY, VT.  
N 4352.5 - W 7300/7.5

1944

FOR SALE BY U. S. GEOLOGICAL SURVEY, WASHINGTON 25, D. C.  
A FOLDER DESCRIBING TOPOGRAPHIC MAPS AND SYMBOLS IS AVAILABLE ON REQUEST

HISTORICAL  
U.S.G.S.  
FILE COPY  
TOPOGRAPHIC DIVISION

OCT 15 1958  
2945