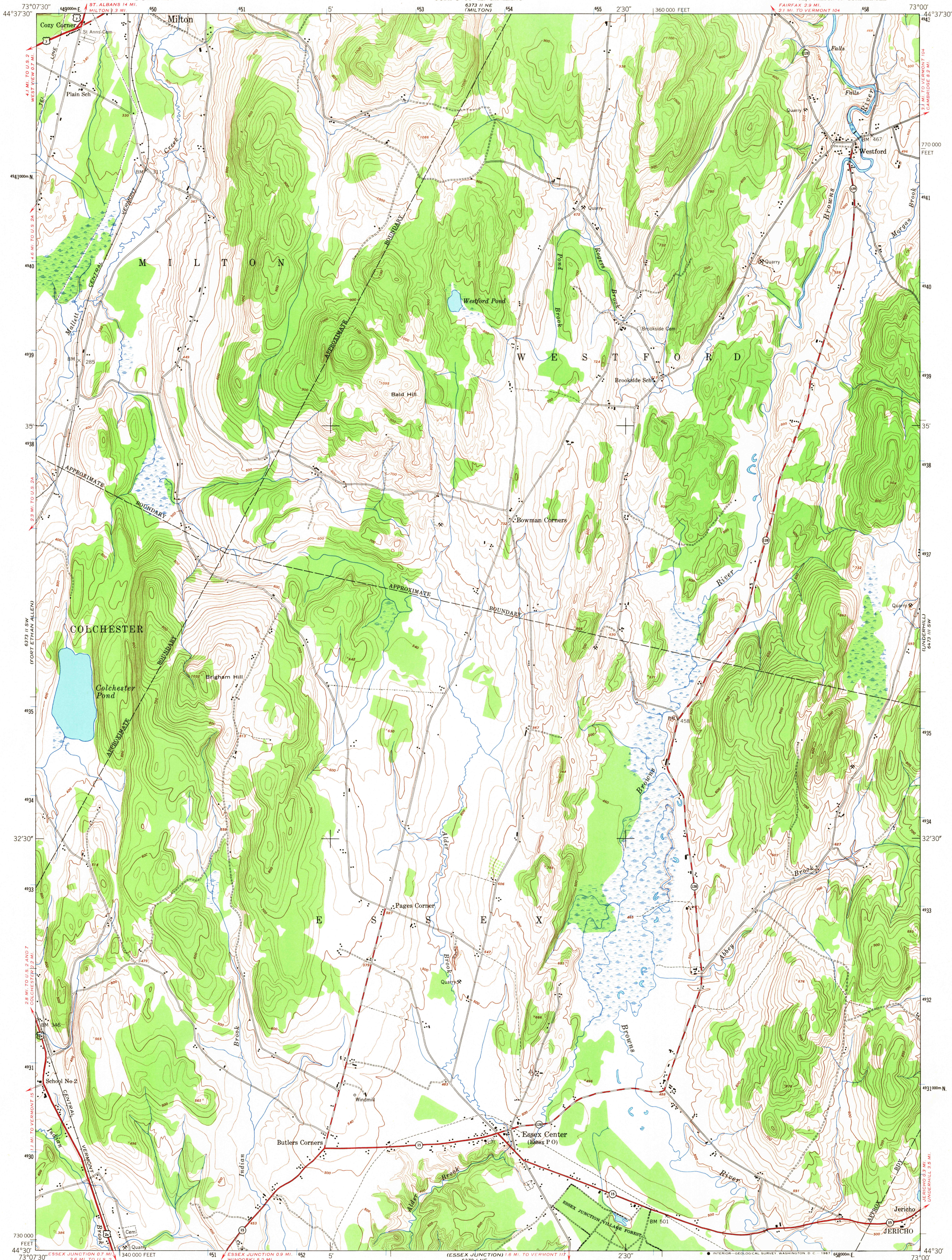


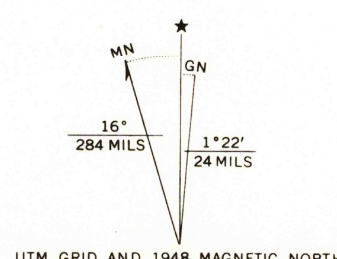
UNITED STATES  
DEPARTMENT OF THE INTERIOR  
GEOLOGICAL SURVEY

UNITED STATES  
DEPARTMENT OF THE ARMY  
CORPS OF ENGINEERS

ESSEX CENTER QUADRANGLE  
VERMONT-CHITTENDEN CO.  
7.5 MINUTE SERIES (TOPOGRAPHIC)  
SE 1/4 MILTON 15' QUADRANGLE



Mapped by the Army Map Service  
Published for civil use by the Geological Survey  
Control by USGS, USC&GS, and USCE  
Topography from aerial photographs by multiplex methods  
Aerial photographs taken 1947. Field check 1948  
Polyconic projection. 1927 North American datum  
10,000-foot grid based on Vermont coordinate system  
No distinction is made between barns, dwellings,  
commercial and industrial buildings  
Unchecked elevations are shown in brown  
1000-meter Universal Transverse Mercator grid ticks,  
zone 18, shown in blue



SCALE 1:24,000  
1 000 0 1000 2000 3000 4000 5000 6000 7000 FEET  
1 5 0 1 KILOMETER  
CONTOUR INTERVAL 20 FEET  
DATUM IS MEAN SEA LEVEL  
THIS MAP COMPLIES WITH NATIONAL MAP ACCURACY STANDARDS  
FOR SALE BY U. S. GEOLOGICAL SURVEY, WASHINGTON, D. C. 20242  
A FOLDER DESCRIBING TOPOGRAPHIC MAPS AND SYMBOLS IS AVAILABLE ON REQUEST

USGS  
Historical File  
Topographic Division  
VT  
QUADRANGLE LOCATION

ROAD CLASSIFICATION  
Heavy-duty 4 LANE 6 LANE Light-duty  
Medium-duty 4 LANE 6 LANE Unimproved dirt  
U. S. Route State Route  
ESSEX CENTER, VT.  
SE 1/4 MILTON 15' QUADRANGLE  
N 4430-W 7300/7.5  
1948  
AMS 6373 II SE-SERIES V813

1500  
HISTORICAL  
JUL 21 1967  
U.S.G.S.  
FINE COPY  
TOPOGRAPHIC DIVISION