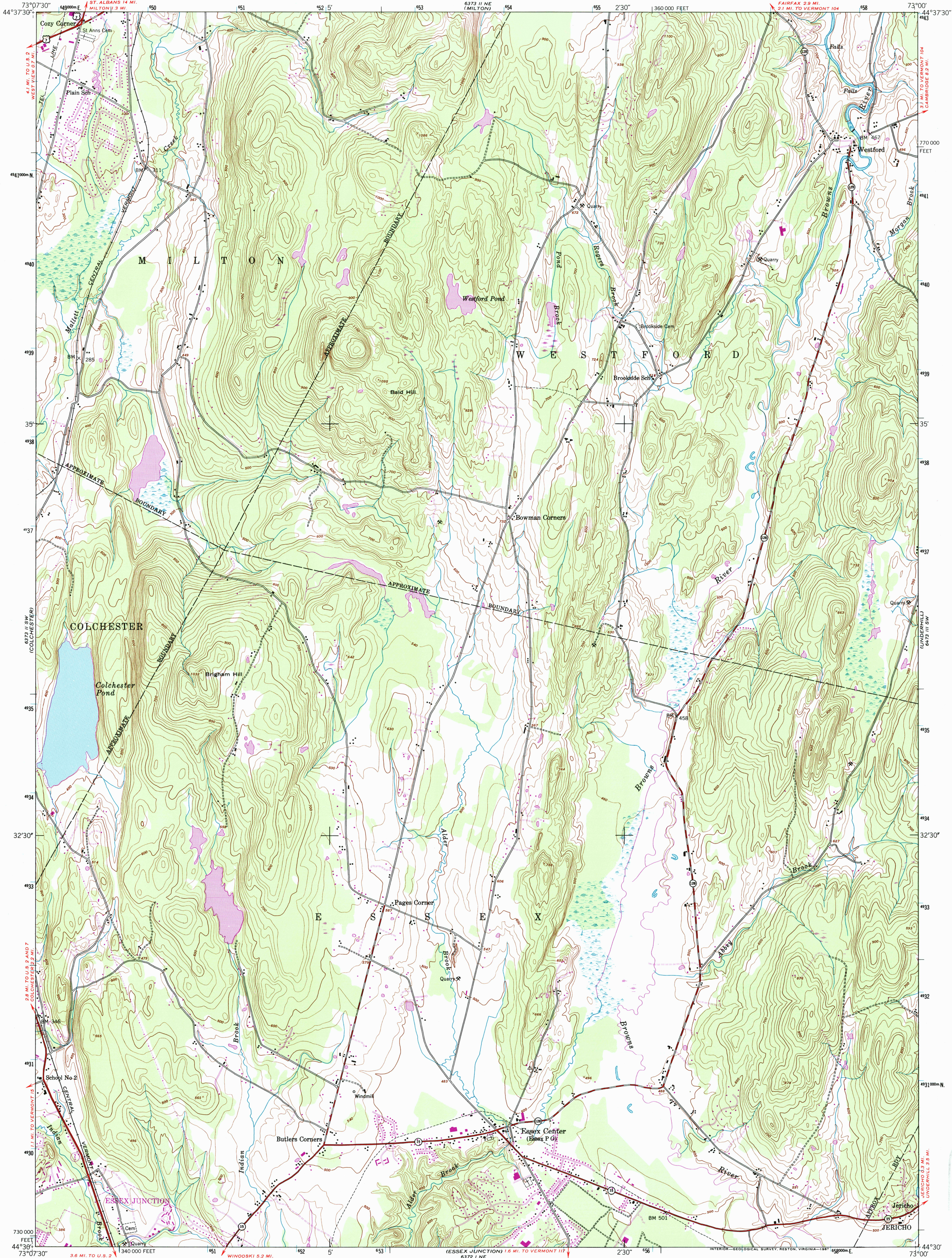


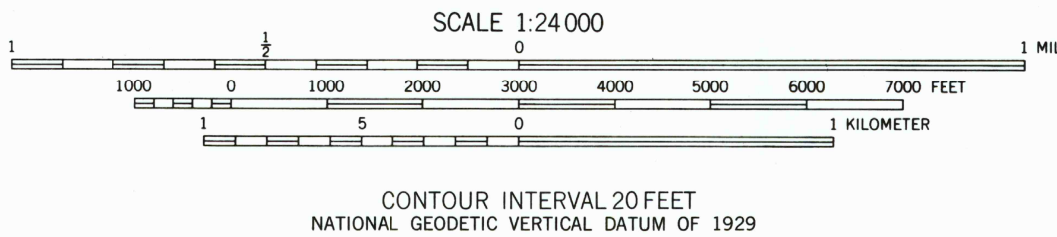
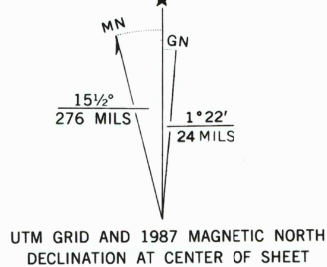
UNITED STATES  
DEPARTMENT OF THE INTERIOR  
GEOLOGICAL SURVEY

UNITED STATES  
DEPARTMENT OF THE ARMY  
CORPS OF ENGINEERS

ESSEX CENTER QUADRANGLE  
VERMONT-CHITTENDEN CO.  
7.5 MINUTE SERIES (TOPOGRAPHIC)  
SE/4 MILTON 15' QUADRANGLE



Maped by the Army Map Service  
Published for civil use by the Geological Survey  
Control by USGS, USC&GS, and USCE  
Topography from aerial photographs by multiplex methods  
Aerial photographs taken 1947. Field check 1948  
Polyconic projection. 1927 North American datum  
10,000-foot grid based on Vermont coordinate system  
1000-meter Universal Transverse Mercator grid ticks,  
zone 18, shown in blue  
To place on the predicted North American Datum 1983  
move the projection lines 2 meters south and  
34 meters west as shown by dashed corner ticks  
No distinction is made between barns, dwellings,  
commercial, and industrial buildings



THIS MAP COMPLIES WITH NATIONAL MAP ACCURACY STANDARDS  
FOR SALE BY U. S. GEOLOGICAL SURVEY  
DENVER, COLORADO 80225 OR RESTON, VIRGINIA 22092  
A FOLDER DESCRIBING TOPOGRAPHIC MAPS AND SYMBOLS IS AVAILABLE ON REQUEST



QUADRANGLE LOCATION

Revisions shown in purple and woodland compiled by  
the Geological Survey from aerial photographs  
taken 1983 and other sources. This information not field checked  
Map edited 1987

ROAD CLASSIFICATION  
Heavy-duty 4 LANE 16 LANE Light-duty  
Medium-duty 4 LANE 16 LANE Unimproved dirt  
U. S. Route State Route

ESSEX CENTER, VT. 12  
SE/4 MILTON 15' QUADRANGLE  
44073-E1-TF-024

1948  
PHOTOREVISED 1987  
DMA 6373 II SE-SERIES V813



ISBN 0-607-54712-2  
9 780607 547122