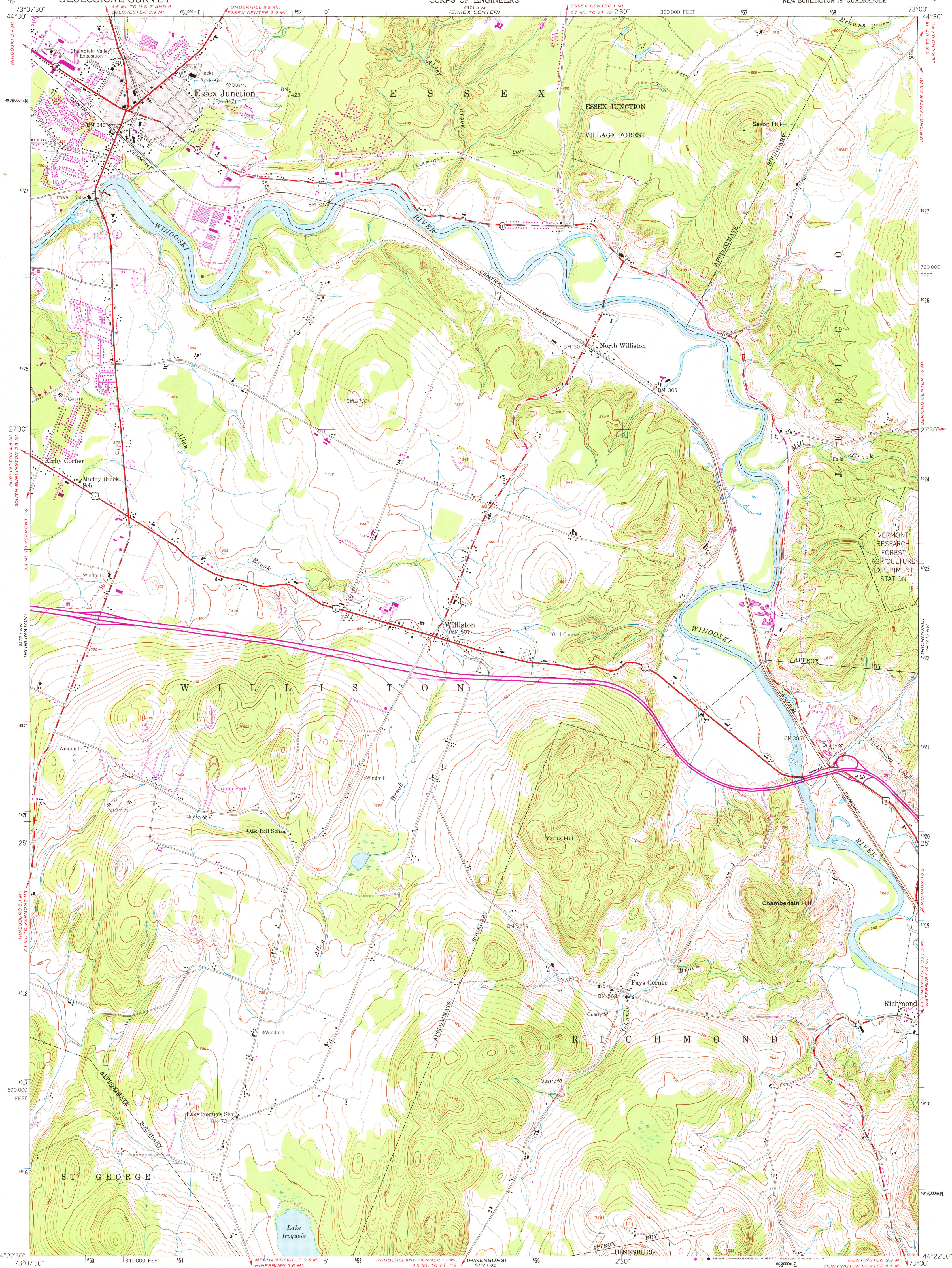


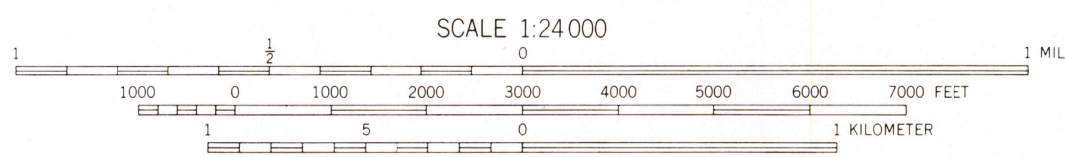
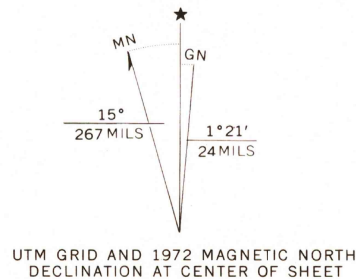
UNITED STATES  
DEPARTMENT OF THE INTERIOR  
GEOLOGICAL SURVEY

UNITED STATES  
DEPARTMENT OF THE ARMY  
CORPS OF ENGINEERS

ESSEX JUNCTION QUADRANGLE  
VERMONT-CHITTENDEN CO.  
7.5 MINUTE SERIES (TOPOGRAPHIC)  
NE/4 BURLINGTON 15' QUADRANGLE



Maped by the Army Map Service  
Published for civil use by the Geological Survey  
Control by USGS, USC&GS, and USCE  
Topography from aerial photographs by multiplex methods  
Aerial photographs taken 1947. Field check 1948  
Polyconic projection. 1927 North American datum  
10,000-foot grid based on Vermont coordinate system  
Red tint indicates area in which only  
landmark buildings are shown  
No distinction is made between barns, dwellings,  
commercial and industrial buildings  
Unchecked elevations are shown in brown  
1000-meter Universal Transverse Mercator grid ticks,  
zone 18, shown in blue



CONTOUR INTERVAL 20 FEET  
NATIONAL GEODETIC VERTICAL DATUM OF 1929

THIS MAP COMPLIES WITH NATIONAL MAP ACCURACY STANDARDS  
FOR SALE BY U. S. GEOLOGICAL SURVEY, RESTON, VIRGINIA 22092  
A FOLDER DESCRIBING TOPOGRAPHIC MAPS AND SYMBOLS IS AVAILABLE ON REQUEST



Revisions shown in purple compiled by the Geological Survey from  
aerial photographs taken 1972. This information not field checked

ROAD CLASSIFICATION  
Heavy-duty ——— Light-duty ———  
Medium-duty ——— Unimproved dirt ———  
Interstate Route U. S. Route State Route

USGS  
Historical File  
Topographic Division

ESSEX JUNCTION, VT.  
NE/4 BURLINGTON 15' QUADRANGLE  
N4422.5-W7300/7.5

1948  
PHOTO-REVISED 1972  
AMS 6372 I NE-SERIES V813

JUL 06 1978  
5400