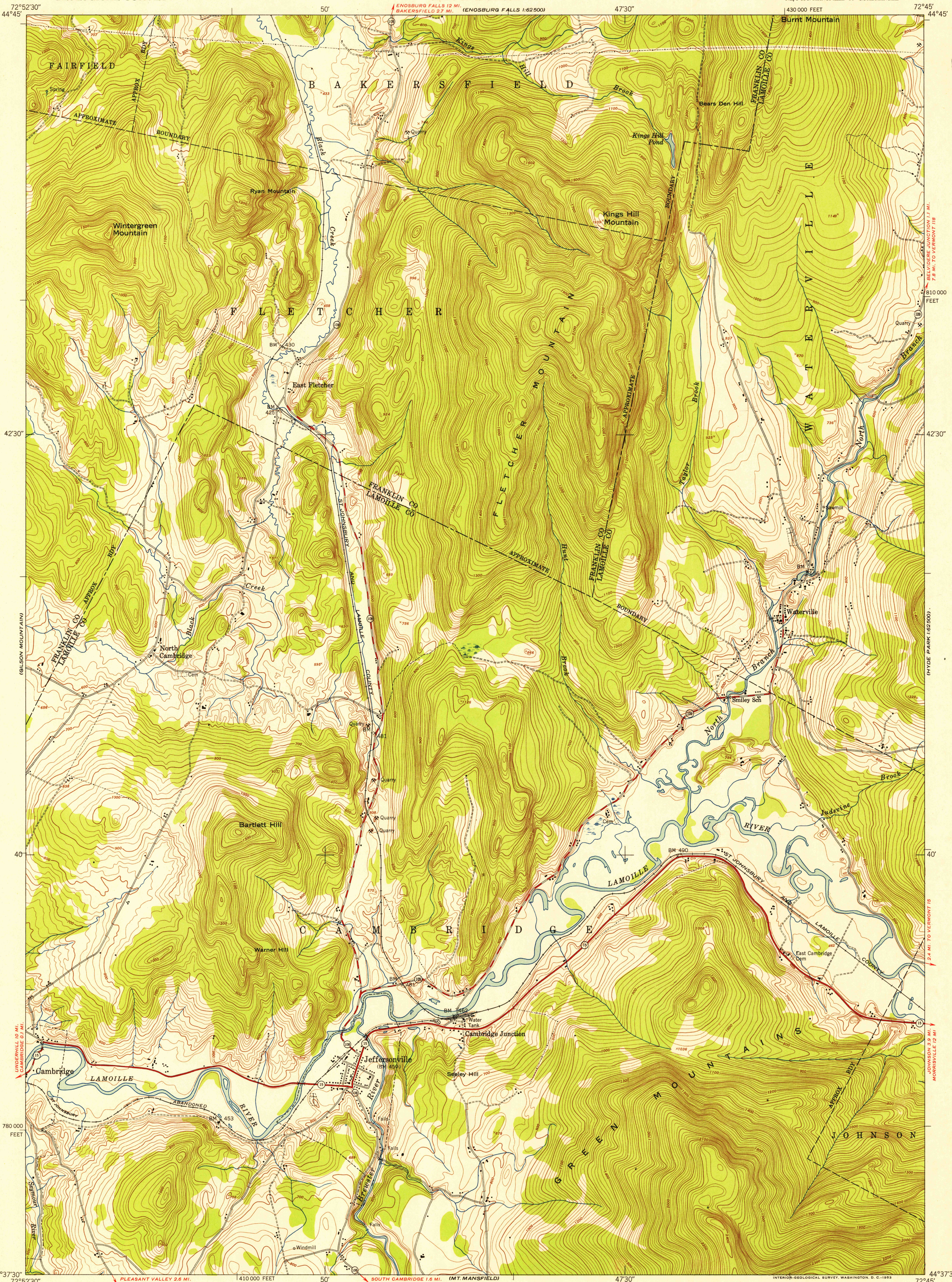
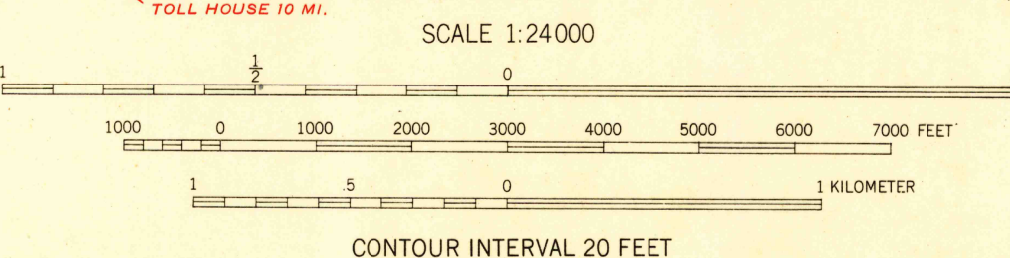


FILE COPY
Inspection and Editing



Mapped by the Army Map Service
Published for civil use by the Geological Survey
Control by USGS, USC&GS, and USCE
Topography from aerial photographs by multiplex methods
Aerial photographs taken 1947. Field check 1948
Polyconic projection. 1927 North American datum
10,000-foot grid based on Vermont coordinate system
No distinction is made between dwellings, barns,
commercial and industrial buildings
Unchecked elevations are shown in brown

APPROXIMATE MEAN
DECLINATION, 1948



USGS
Historical File
Topographic Division

ROAD CLASSIFICATION
Heavy-duty... 4 LANE 16 LANE Light-duty...
Medium-duty... 4 LANE 16 LANE Unimproved dirt...
U. S. Route State Route

JEFFERSONVILLE, VT.
NE/4 MT. MANSFIELD 15' QUADRANGLE
N4437.5-W7245/7.5

1948

THIS MAP COMPLIES WITH NATIONAL MAP ACCURACY STANDARDS
FOR SALE BY U. S. GEOLOGICAL SURVEY, WASHINGTON 25, D. C.
A FOLDER DESCRIBING TOPOGRAPHIC MAPS AND SYMBOLS IS AVAILABLE ON REQUEST

HISTORICAL
FILE COPY
Inspection and Editing

DEC 10 1953

2585