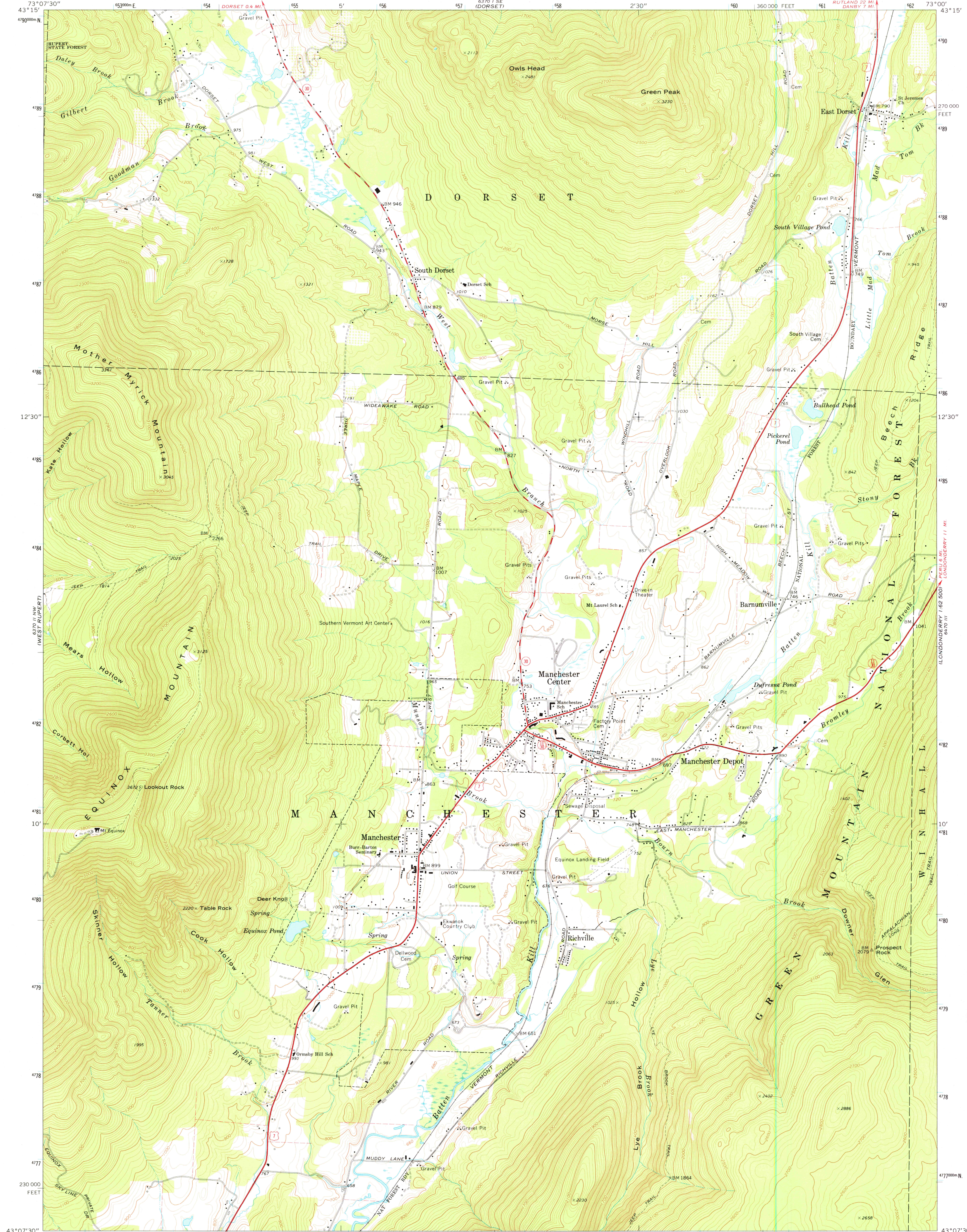


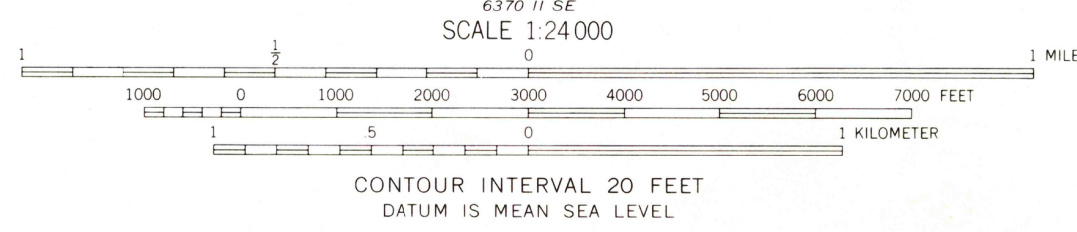
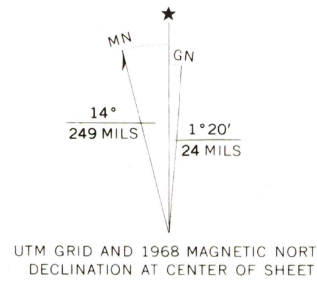
UNITED STATES
DEPARTMENT OF THE INTERIOR
GEOLOGICAL SURVEY

MANCHESTER QUADRANGLE
VERMONT-BENNINGTON CO.
7.5 MINUTE SERIES (TOPOGRAPHIC)
NE/4 EQUINOX 15' QUADRANGLE



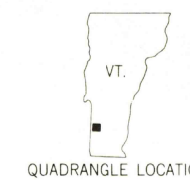
Maped, edited, and published by the Geological Survey
Control by USGS and USC&GS

Topography by photogrammetric methods from aerial
photographs taken 1965. Field checked 1968
Polyconic projection. 1927 North American datum
10,000-foot grid based on Vermont coordinate system
1000-meter Universal Transverse Mercator grid ticks, zone 18,
shown in blue
Fine red dashed lines indicate selected fence and field lines where
generally visible on aerial photographs. This information is unchecked



THIS MAP COMPLIES WITH NATIONAL MAP ACCURACY STANDARDS
FOR SALE BY U. S. GEOLOGICAL SURVEY, WASHINGTON, D. C. 20242
A FOLDER DESCRIBING TOPOGRAPHIC MAPS AND SYMBOLS IS AVAILABLE ON REQUEST

ROAD CLASSIFICATION	
Primary highway, hard surface	Light duty road, hard or improved surface
Secondary highway, hard surface	Unimproved road
Interstate Route	U. S. Route
	State Route



MANCHESTER, VT.
NE/4 EQUINOX 15' QUADRANGLE
N4307.5—W7300/7.5

USGS
Historical File
Topographic Division

1968
AMS 6370 II NE—SERIES V813

RETURN TO:
USGS NHD HISTORICAL MAP ARCHIVES

APR 12 1977

4200