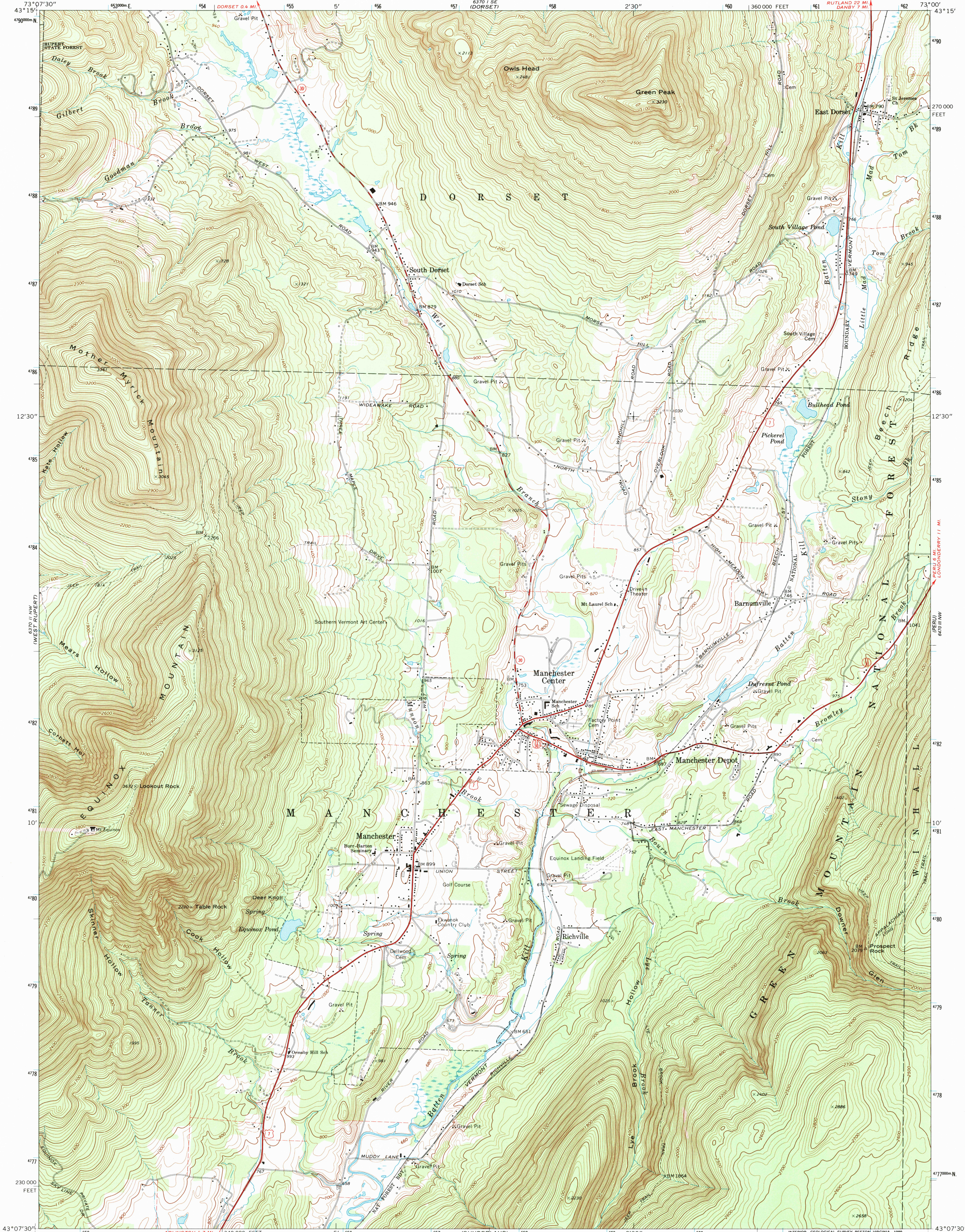


UNITED STATES  
DEPARTMENT OF THE INTERIOR  
GEOLOGICAL SURVEY

MANCHESTER QUADRANGLE  
VERMONT-BENNINGTON CO.  
7.5 MINUTE SERIES (TOPOGRAPHIC)

NE 1/4 EQUINOX 15' QUADRANGLE



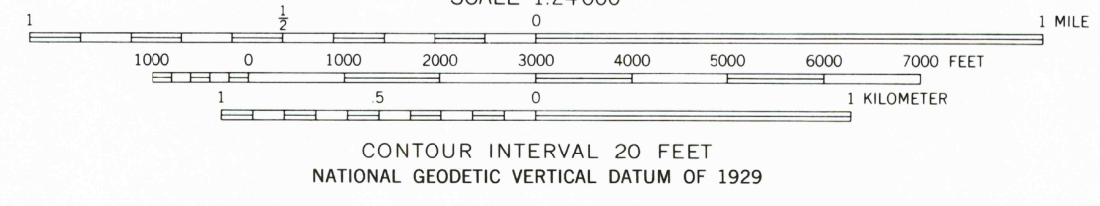
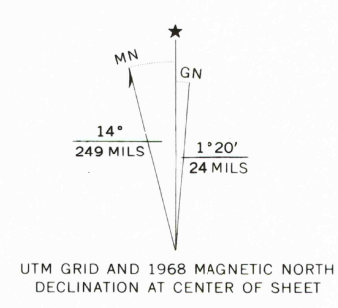
Mapped, edited, and published by the Geological Survey  
Control by USGS and USC&GS

Topography by photogrammetric methods from aerial  
photographs taken 1965. Field checked 1968

Polyconic projection. 1927 North American datum  
10,000-foot grid based on Vermont coordinate system.  
1000-meter Universal Transverse Mercator grid ticks, zone 18,  
shown in blue

Fine red dashed lines indicate selected fence and field lines where  
generally visible on aerial photographs. This information is uncheckd

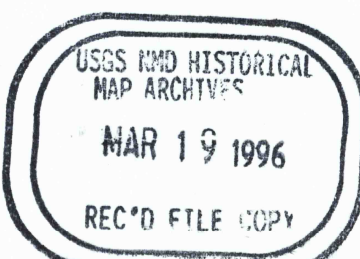
To place on the predicted North American Datum 1983  
move the projection lines 4 meters south and  
36 meters west as shown by dashed corner ticks



THIS MAP COMPLIES WITH NATIONAL MAP ACCURACY STANDARDS  
FOR SALE BY U.S. GEOLOGICAL SURVEY  
DENVER, COLORADO 80225, OR RESTON, VIRGINIA 22092  
A FOLDER DESCRIBING TOPOGRAPHIC MAPS AND SYMBOLS IS AVAILABLE ON REQUEST



ROAD CLASSIFICATION	
Primary highway, hard surface	Light-duty road, hard or improved surface
Secondary highway, hard surface	Unimproved road
Interstate Route	U. S. Route
	State Route



MANCHESTER, VT.  
NE 1/4 EQUINOX 15' QUADRANGLE  
43073-B1-TF-024  
1968  
DMA 6370 II NE-SERIES V813

