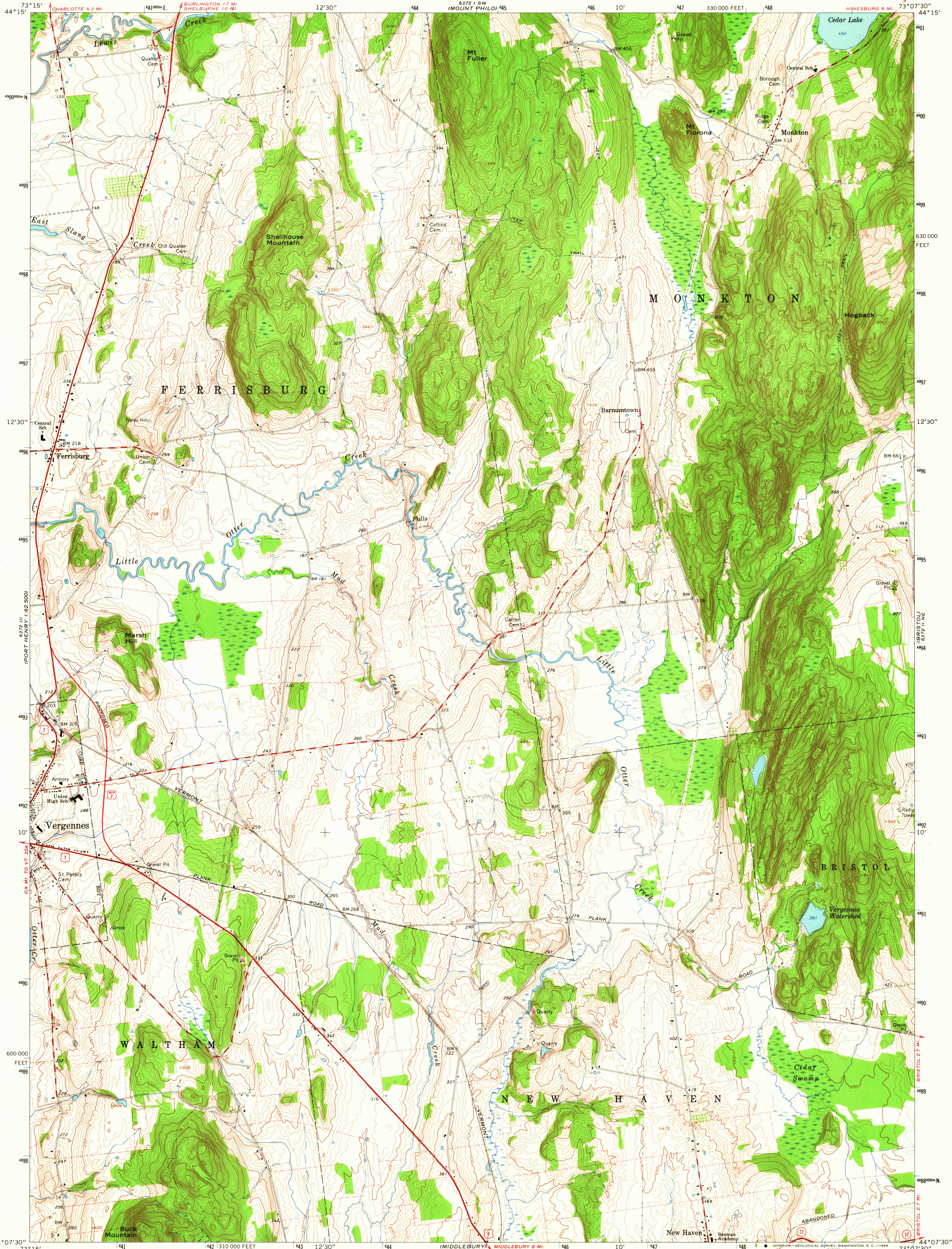
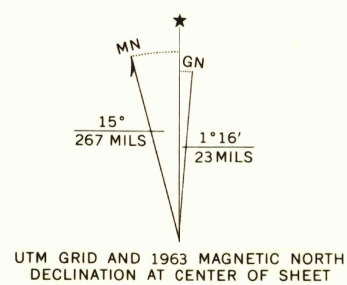


UNITED STATES  
DEPARTMENT OF THE INTERIOR  
GEOLOGICAL SURVEY

MONKTON QUADRANGLE  
VERMONT—ADDISON CO.  
7.5 MINUTE SERIES (TOPOGRAPHIC)  
NW/4 MIDDLEBURY 15' QUADRANGLE



Mapped, edited, and published by the Geological Survey  
Control by USGS and USC&GS  
Topography by photogrammetric methods from aerial  
photographs taken 1961. Field checked 1963  
Polyconic projection. 1927 North American datum  
10,000-foot grid based on Vermont coordinate system  
1000-meter Universal Transverse Mercator grid ticks,  
zone 18, shown in blue  
Fine red dashed lines indicate selected fence and field lines where  
generally visible on aerial photographs.  
This information is unchecked



THIS MAP COMPLIES WITH NATIONAL MAP ACCURACY STANDARDS  
FOR SALE BY U. S. GEOLOGICAL SURVEY, WASHINGTON 25, D. C.  
A FOLDER DESCRIBING TOPOGRAPHIC MAPS AND SYMBOLS IS AVAILABLE ON REQUEST

USGS  
Historical File  
Topographic Division

ROAD CLASSIFICATION  
Heavy-duty ——— Light-duty ———  
Medium-duty ——— Unimproved dirt ———  
U.S. Route ——— State Route ———

MONKTON, VT.  
NW/4 MIDDLEBURY 15' QUADRANGLE  
N4407.5—W7307.5/7.5

U.S.G.S.  
FILE COPY  
TOPOGRAPHIC DIVISION

1963

AMS 6372 II NW—SERIES V813

OCT 14 1964

3620