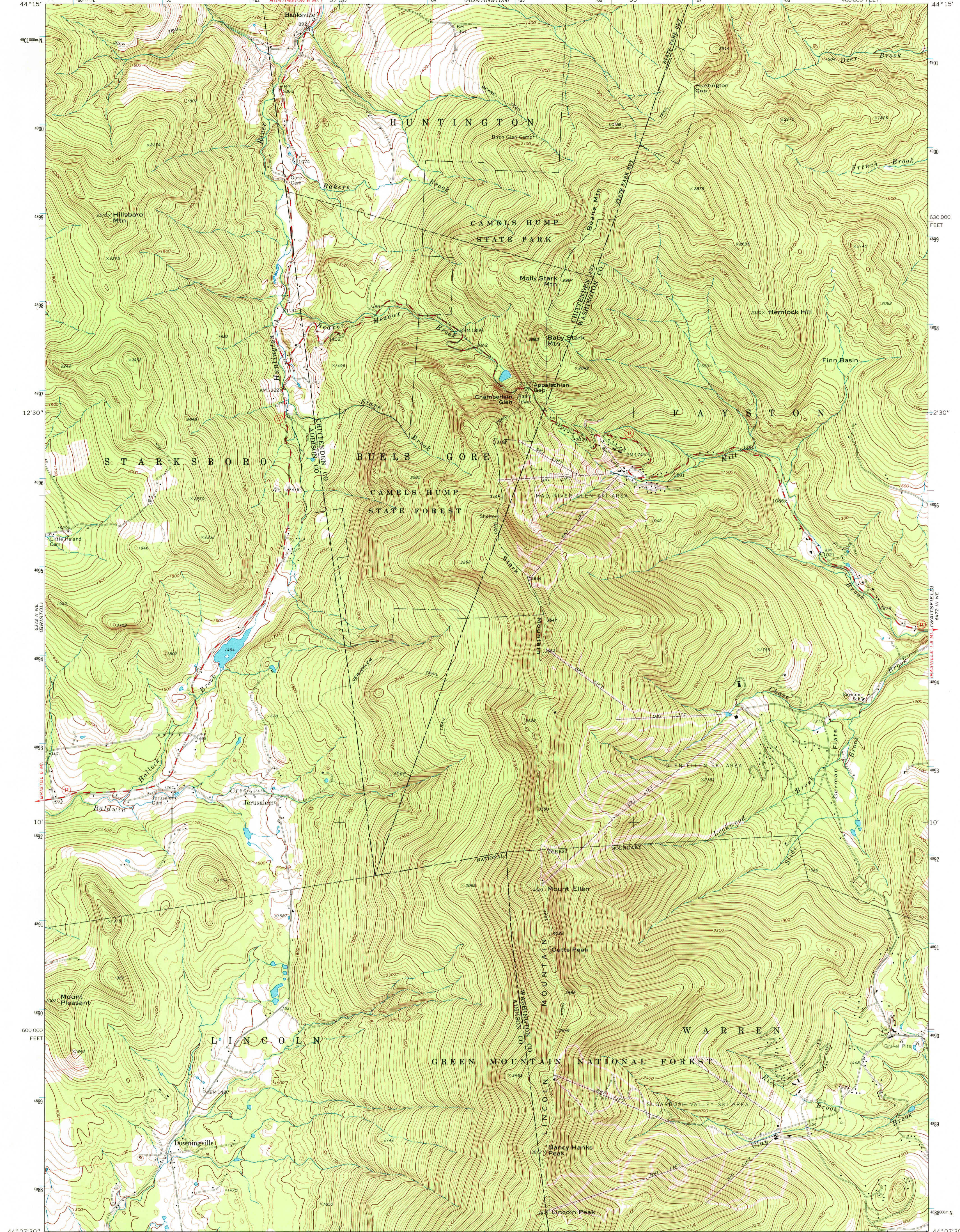


6372 I/E  
HUNTSBURG

6372 IV/E  
WATERBURY



6372 I/NE  
GERARD COL.

6372 I/SE  
BASTON 6 M.

6372 I/NE  
GERARD COL.

6372 I/SE  
BASTON 6 M.

6372 I/NE  
GERARD COL.

6372 I/SE  
BASTON 6 M.

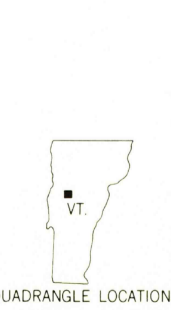
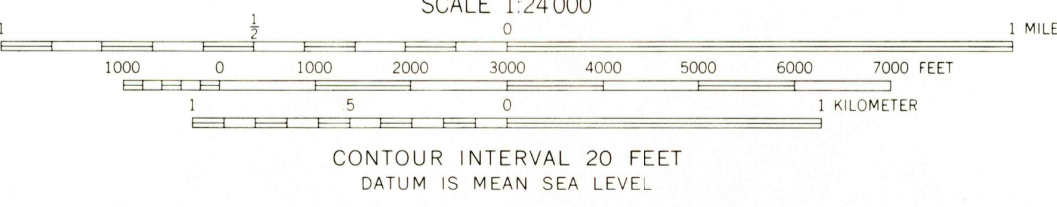
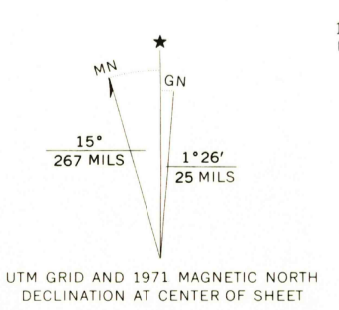
6372 I/NE  
GERARD COL.

6372 I/SE  
BASTON 6 M.

6372 I/NE  
GERARD COL.

6372 I/SE  
BASTON 6 M.

Mapped, edited, and published by the Geological Survey  
Control by USGS and USC&GS  
Topography by photogrammetric methods from aerial photographs  
taken 1962 and 1970. Field checked 1971  
Polyconic projection, 1927 North American datum  
10,000-foot grid based on Vermont coordinate system  
1000-meter Universal Transverse Mercator grid ticks, zone 18,  
shown in blue  
Fine red dashed lines indicate selected fence and field lines where  
generally visible on aerial photographs. This information is unchecked



ROAD CLASSIFICATION

Primary highway, hard surface	Light-duty road, hard or improved surface
Secondary highway, hard surface	Unimproved road
Interstate Route	U. S. Route
	State Route

MOUNT ELLEN, VT.  
NW/4 LINCOLN MOUNTAIN 15' QUADRANGLE  
N4407.5—W7252.5/7.5

1971  
AMS 6472 III NW—SERIES V813

JAN 17 1973  
R McN  
5000

USGS  
HISTORICAL FILE  
TOPOGRAPHIC DIVISION