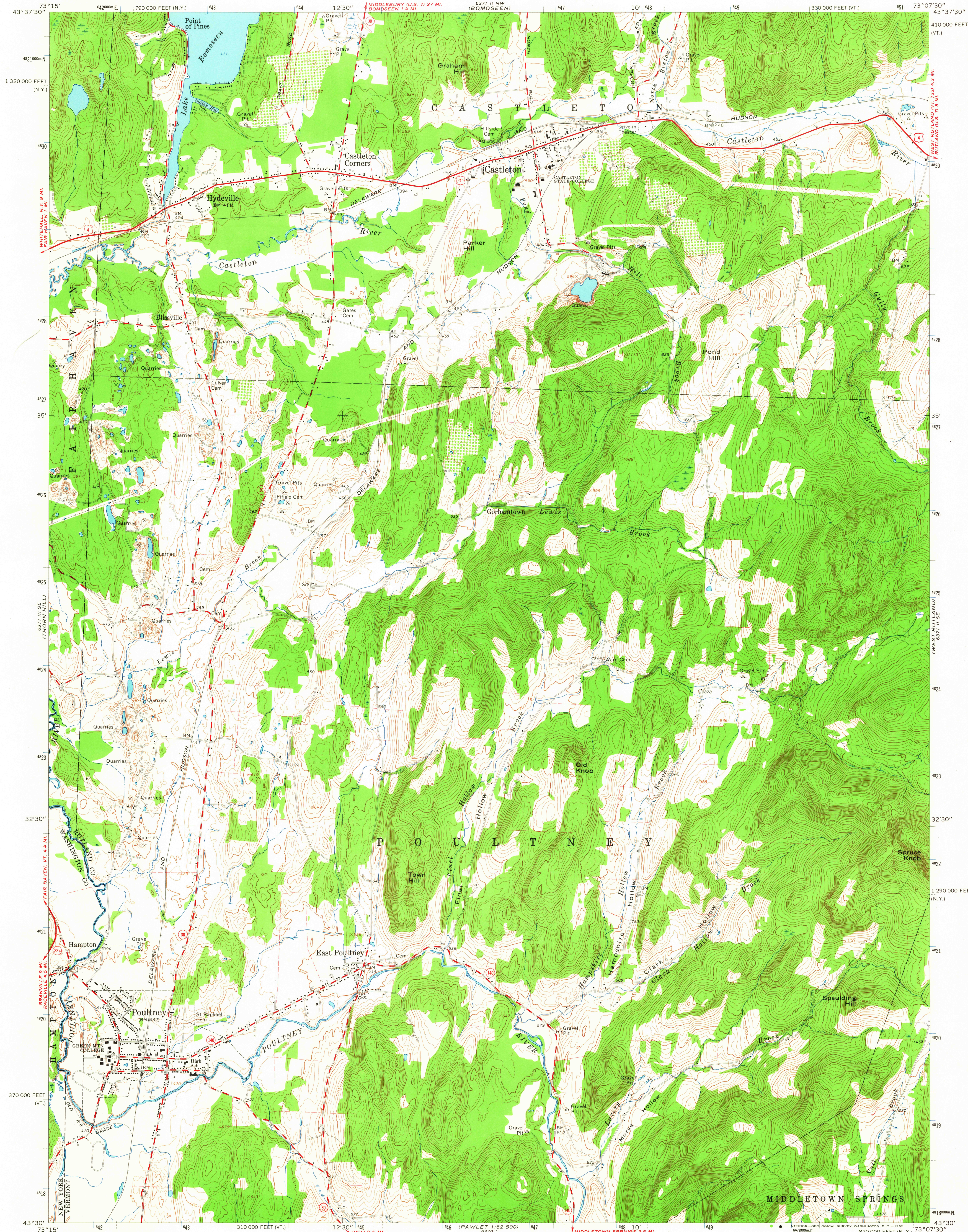
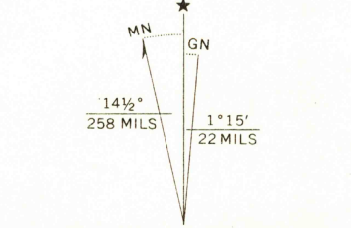


UNITED STATES  
DEPARTMENT OF THE INTERIOR  
GEOLOGICAL SURVEY

POULTNEY QUADRANGLE  
VERMONT-NEW YORK  
7.5 MINUTE SERIES (TOPOGRAPHIC)  
SW/4 CASTLETON 15' QUADRANGLE



Mapped, edited, and published by the Geological Survey  
Control by USGS and USC&GS  
Topography by photogrammetric methods from aerial photographs  
taken 1962. Field checked 1964  
Polyconic projection, 1927 North American datum  
10,000-foot grids based on Vermont coordinate system, and New York  
coordinate system, east zone  
1000-meter Universal Transverse Mercator grid ticks,  
zone 18, shown in blue  
Fine red dashed lines indicate selected fence and field lines where  
generally visible on aerial photographs. This information is unchecked



THIS MAP COMPLIES WITH NATIONAL MAP ACCURACY STANDARDS  
FOR SALE BY U.S. GEOLOGICAL SURVEY, WASHINGTON, D.C. 20242  
A FOLDER DESCRIBING TOPOGRAPHIC MAPS AND SYMBOLS IS AVAILABLE ON REQUEST

USGS  
Historical File  
Topographic Division

ROAD CLASSIFICATION

Heavy-duty ——— Light-duty ———  
Medium-duty ——— Unimproved dirt ———  
U.S. Route ——— State Route ———



U.S.G.S.  
FILE COPY  
TOPOGRAPHIC DIVISION

POULTNEY, VT.-N.Y.  
SW/4 CASTLETON 15' QUADRANGLE  
N4330-W7307.5/7.5

1964

MS 6371 II SW-SERIES V813

AUG 13 1965

4140