

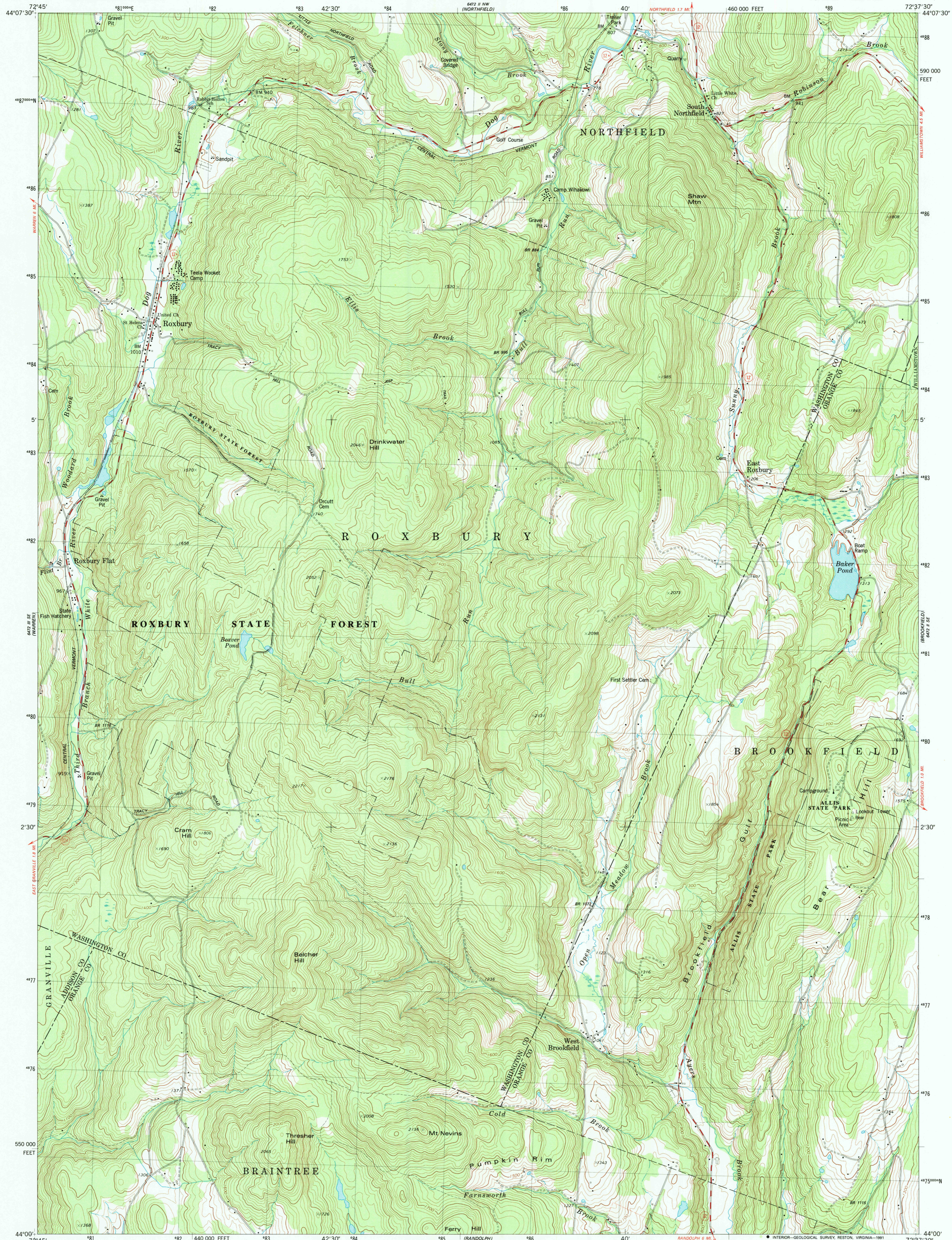
6472 II NW
(NORTHFIELD)

UNITED STATES
DEPARTMENT OF THE INTERIOR
GEOLOGICAL SURVEY

STATE OF VERMONT
VERMONT AGENCY OF ENVIRONMENTAL CONSERVATION

ROXBURY QUADRANGLE
VERMONT
7.5 MINUTE SERIES (TOPOGRAPHIC)
SW/4 BARRE 15' QUADRANGLE

6472 II NE
(ROXBURY CENTER)



Mapped, edited, and published by the Geological Survey

Control by USGS and NOS/NOAA

Topography by photogrammetric methods from aerial photographs taken 1973. Field checked 1975. Map edited 1980

Projection and 10,000-foot grid ticks: Vermont coordinate system (transverse Mercator)

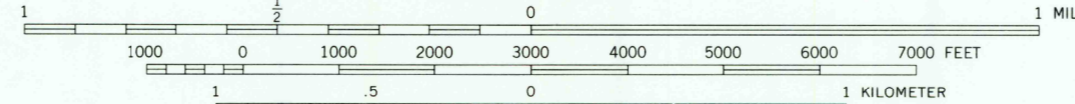
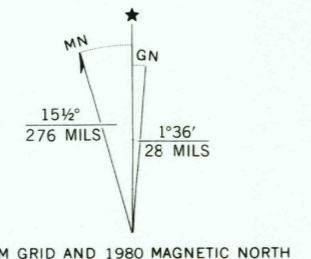
1000-meter Universal Transverse Mercator grid, zone 18

1927 North American Datum

To place on the predicted North American Datum 1983 move the projection lines 2 meters south and 36 meters west as shown by dashed corner ticks

Fine red dashed lines indicate selected fence and field lines where generally visible on aerial photographs. This information is unchecked

There may be private inholdings within the boundaries of the National or State reservations shown on this map



CONTOUR INTERVAL 20 FEET
NATIONAL GEODETIC VERTICAL DATUM OF 1929

THIS MAP COMPLIES WITH NATIONAL MAP ACCURACY STANDARDS
FOR SALE BY U. S. GEOLOGICAL SURVEY
DENVER, COLORADO 80225, OR RESTON, VIRGINIA 22092
A FOLDER DESCRIBING TOPOGRAPHIC MAPS AND SYMBOLS IS AVAILABLE ON REQUEST

Map photospcted 1983
No major culture or drainage changes observed

ROAD CLASSIFICATION

Primary highway, hard surface	Light-duty road, hard or improved surface
Secondary highway, hard surface	Unimproved road
Interstate Route	U. S. Route
	State Route



ROXBURY, VT.

SW/4 BARRE 15' QUADRANGLE
N4400-W7237.5/7.5

1980

PHOTOINSPECTED 1983
DMA 6472 II SW-SERIES V813