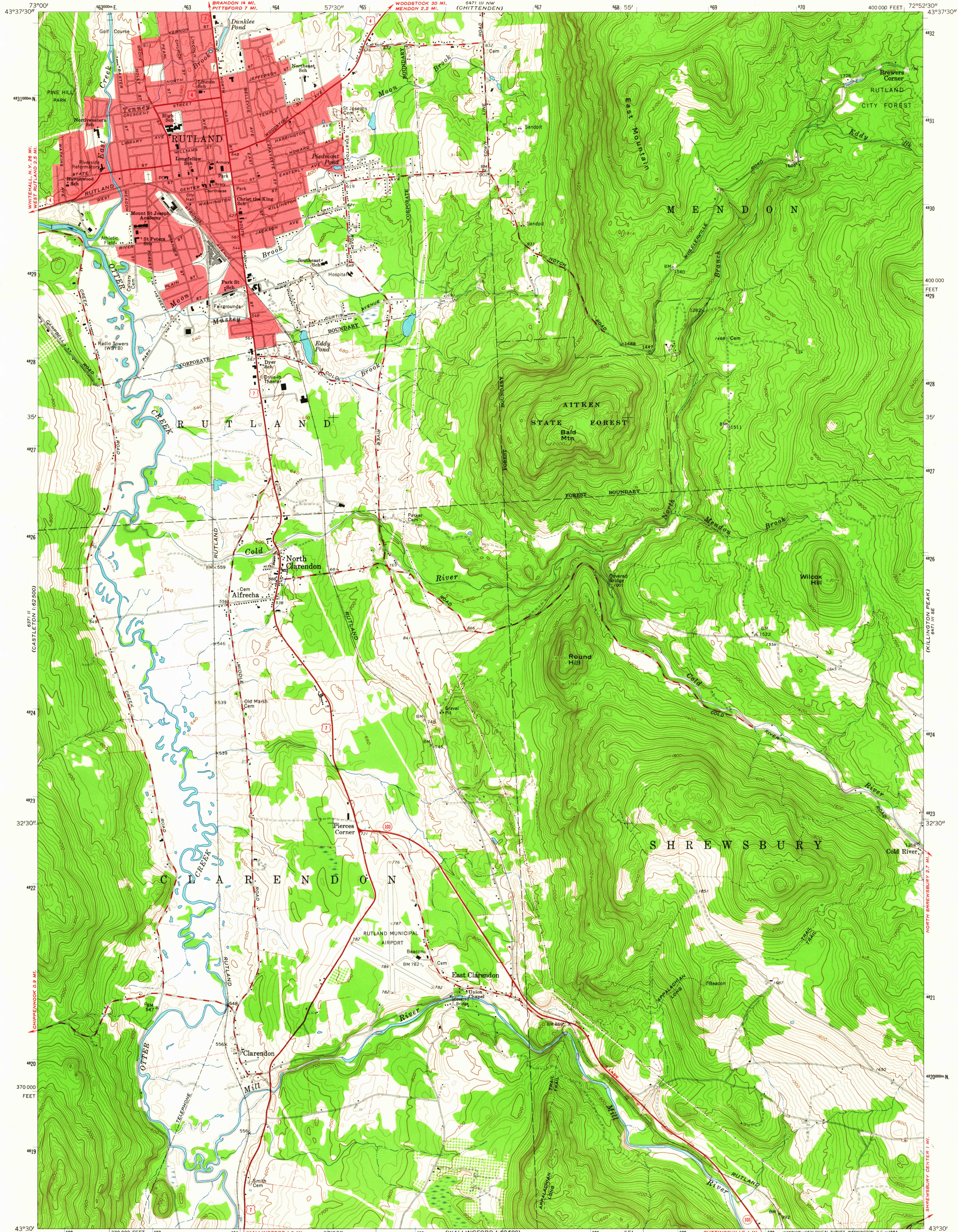


6871 III NE
(PROCTOR)

6871 III NE
(1700 FEET)



Mapped, edited, and published by the Geological Survey
Control by USGS and USC&GS
Topography by photogrammetric methods from aerial
photographs taken 1957. Field checked 1961
Polyconic projection. 1927 North American datum
10,000-foot grid based on Vermont coordinate system
1000-meter Universal Transverse Mercator grid ticks,
zone 18, shown in blue
Fine red dashed lines indicate selected fence and field lines where
generally visible on aerial photographs. This information is unchecked
Red tint indicates area in which only landmark
buildings are shown

SCALE 1:24,000
1000 0 1000 2000 3000 4000 5000 6000 7000 FEET
1 5 10 20 30 40 50 60 70 80 90 100 METERS
CONTOUR INTERVAL 20 FEET
DATUM IS MEAN SEA LEVEL

UTM GRID AND 1961 MAGNETIC NORTH
DECLINATION AT CENTER OF SHEET

THIS MAP COMPLIES WITH NATIONAL MAP ACCURACY STANDARDS
FOR SALE BY U. S. GEOLOGICAL SURVEY, WASHINGTON 25, D. C.
A FOLDER DESCRIBING TOPOGRAPHIC MAPS AND SYMBOLS IS AVAILABLE ON REQUEST

USGS
Historical File
Topographic Division

ROAD CLASSIFICATION
Heavy-duty ——— Light-duty ———
Medium-duty ——— Unimproved dirt - - - - -
U. S. Route □ State Route ○

RUTLAND, VT.
SW/4 RUTLAND 15' QUADRANGLE
N4330—W7252.5/7.5
1961
AMS 6471 III SW—SERIES V813

U.S.G.S. Historical
FILE COPY
TOPOGRAPHIC DIVISION

4475
MAR 5 1964