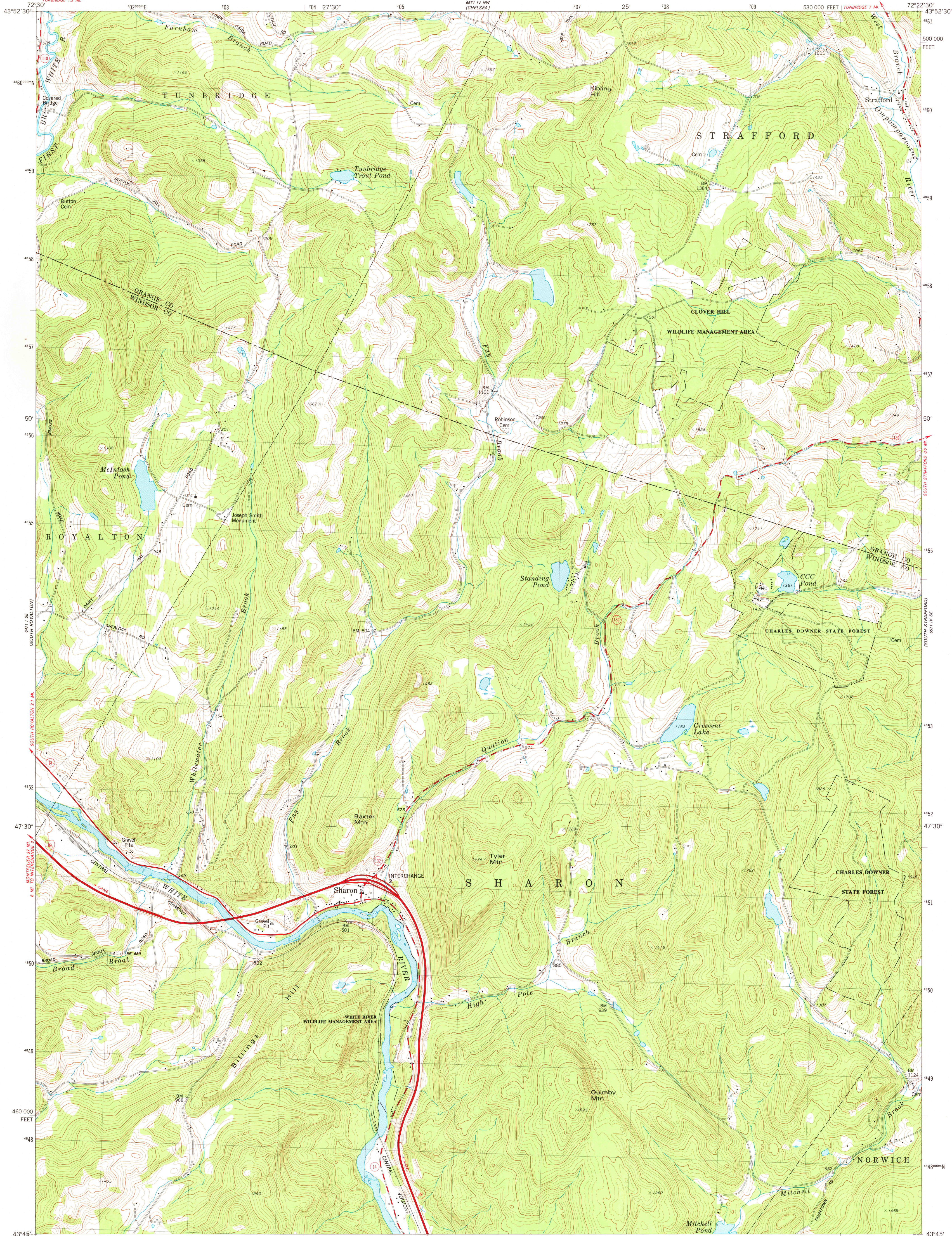
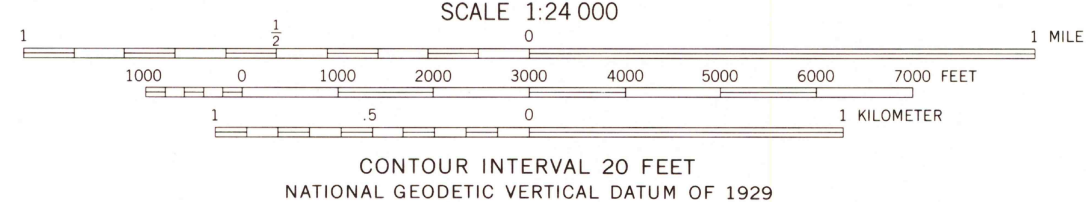
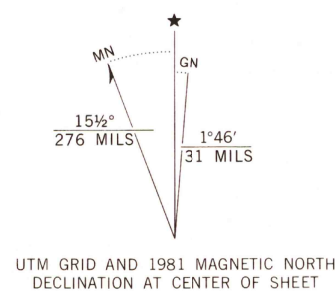


UNITED STATES
DEPARTMENT OF THE INTERIOR
GEOLOGICAL SURVEY

SHARON QUADRANGLE
VERMONT
7.5 MINUTE SERIES (TOPOGRAPHIC)
SW/4 STRAFFORD 15' QUADRANGLE



Mapped, edited, and published by the Geological Survey
Control by USGS and NOS/NOAA
Topography by photogrammetric methods from aerial photographs taken 1973. Field checked 1975. Map edited 1981
Projection and 10,000-foot grid ticks: Vermont coordinate system, (transverse Mercator)
1000-meter Universal Transverse Mercator grid, zone 18 1927 North American Datum
To place on the predicted North American Datum 1983 move the projection lines 3 meters south and 37 meters west as shown by dashed corner ticks
There may be private inholdings within the boundaries of the National or State reservations shown on this map



THIS MAP COMPLIES WITH NATIONAL MAP ACCURACY STANDARDS
FOR SALE BY U.S. GEOLOGICAL SURVEY, RESTON, VIRGINIA 22092
A FOLDER DESCRIBING TOPOGRAPHIC MAPS AND SYMBOLS IS AVAILABLE ON REQUEST

ROAD CLASSIFICATION
Primary highway, hard surface
Secondary highway, hard surface
Unimproved road
Interstate Route
U. S. Route
State Route
Light-duty road, hard or improved surface
Unimproved road



USGS
HISTORICAL FILE
NATIONAL MAPPING DIVISION

SHARON, VT.
SW/4 STRAFFORD 15' QUADRANGLE
N4345-W7222.5/7.5

1981
DMA 6571 IV SW-SERIES V813

JUN 3 1981
2300